

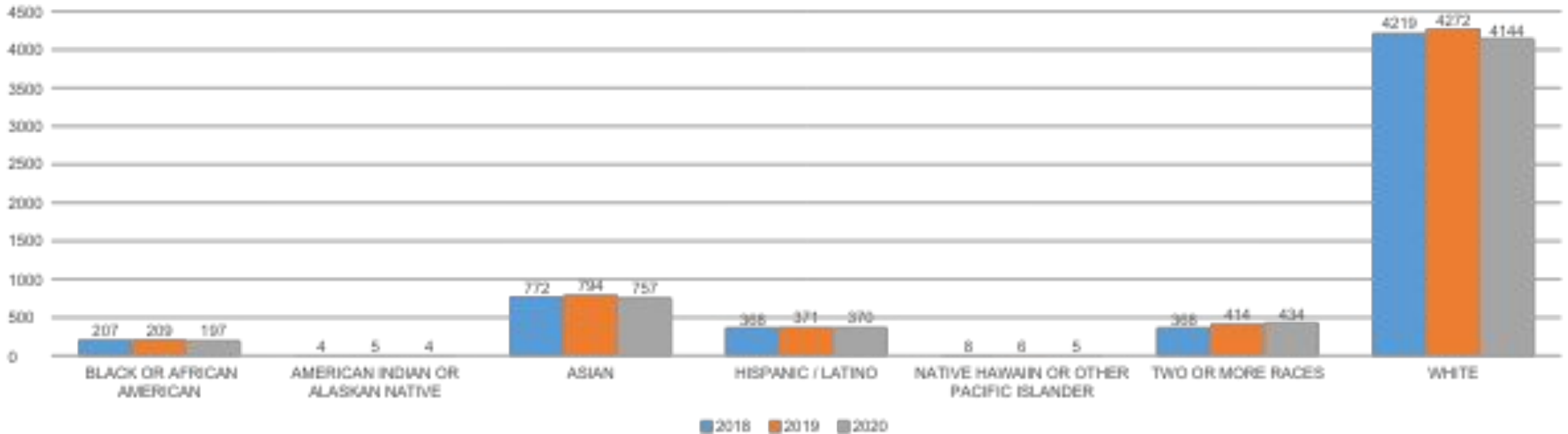


ARLINGTON PUBLIC
SCHOOLS
2020 DIVERSITY REPORT

OCTOBER 8, 2020

STUDENT DATA AS OF OCTOBER 1, 2020

	2018	2019	2020
BLACK OR AFRICAN AMERICAN	207	209	197
AMERICAN INDIAN OR ALASKAN NATIVE	4	5	4
ASIAN	772	794	757
HISPANIC / LATINO	368	371	370
NATIVE HAWAIIAN OR OTHER PACIFIC ISLANDER	8	6	5
TWO OR MORE RACES	368	414	434
WHITE	4219	4272	4144
Total	5946	6071	5911

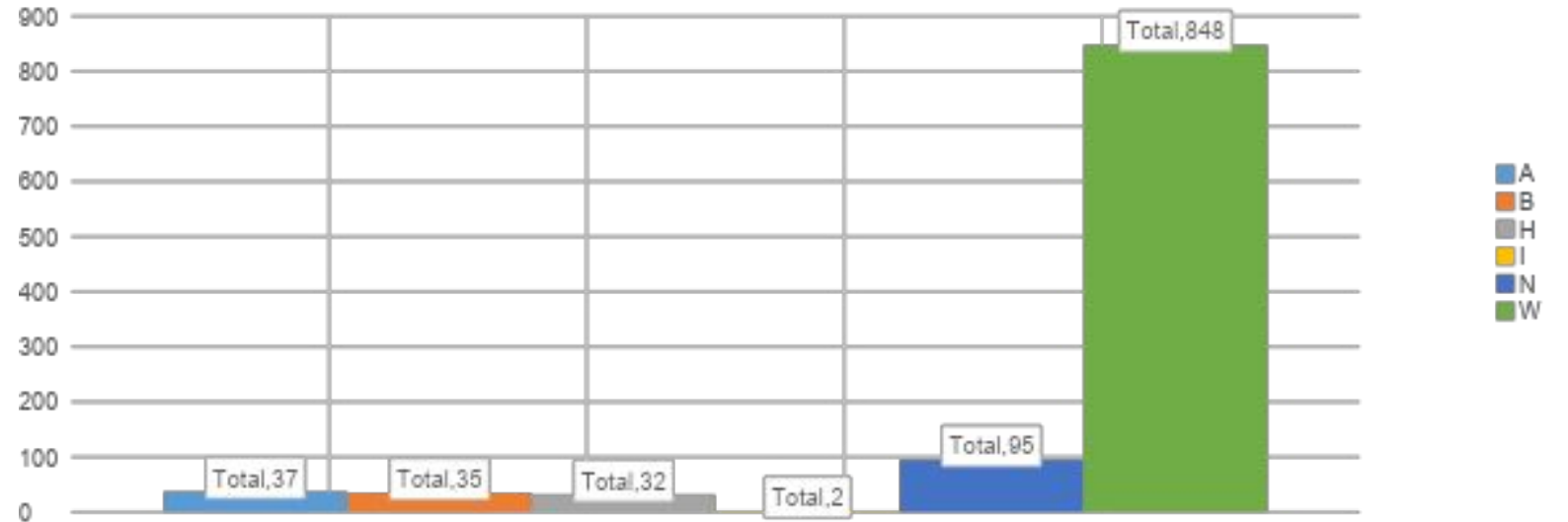


ALL EMPLOYEES

(EXCEPT SUBSTITUTES, COACHES AND COMMUNITY ED.)

All Employees

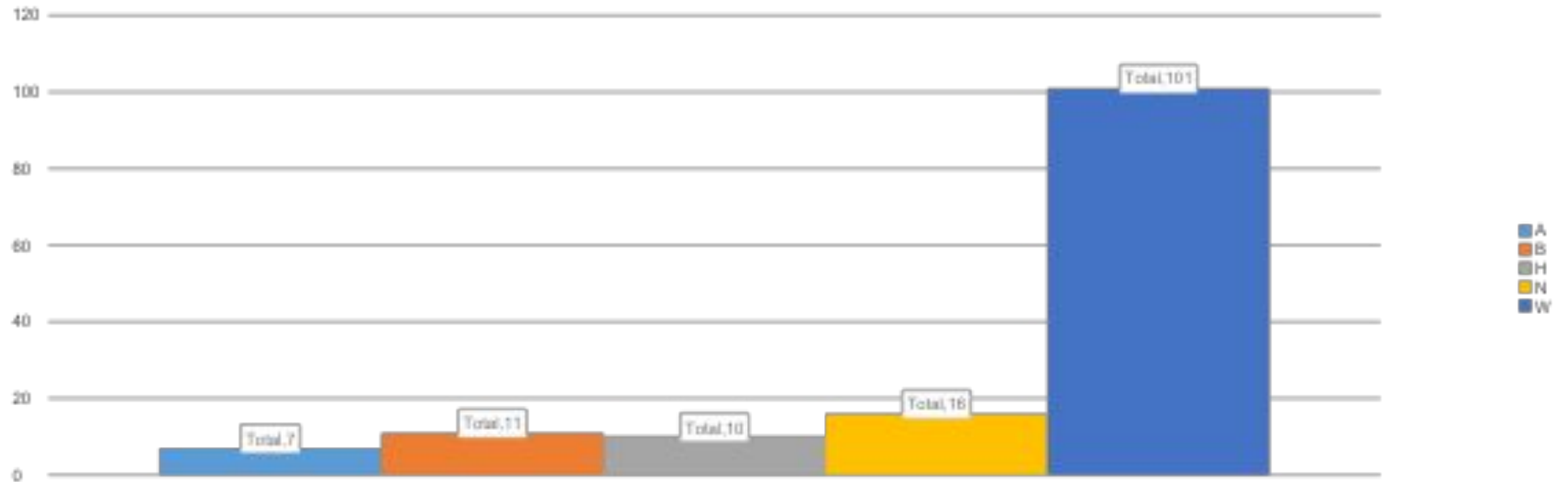
	2017	2018	2019	2020
Asian	3.01%	3.15%	3.33%	3.53%
Black	2.71%	3.34%	3.15%	3.34%
Hispanic	2.40%	2.48%	2.50%	3.05%
Indian or Native America	0.10%	0.19%	0.28%	0.19%
Not-Identified	2.91%	3.72%	7.87%	9.06%
White	88.88%	87.12%	82.87%	80.84%



A	B	H	I	N	W	Grand Total
37	35	32	2	95	848	1049
3.53%	3.34%	3.05%	0.19%	9.06%	80.84%	

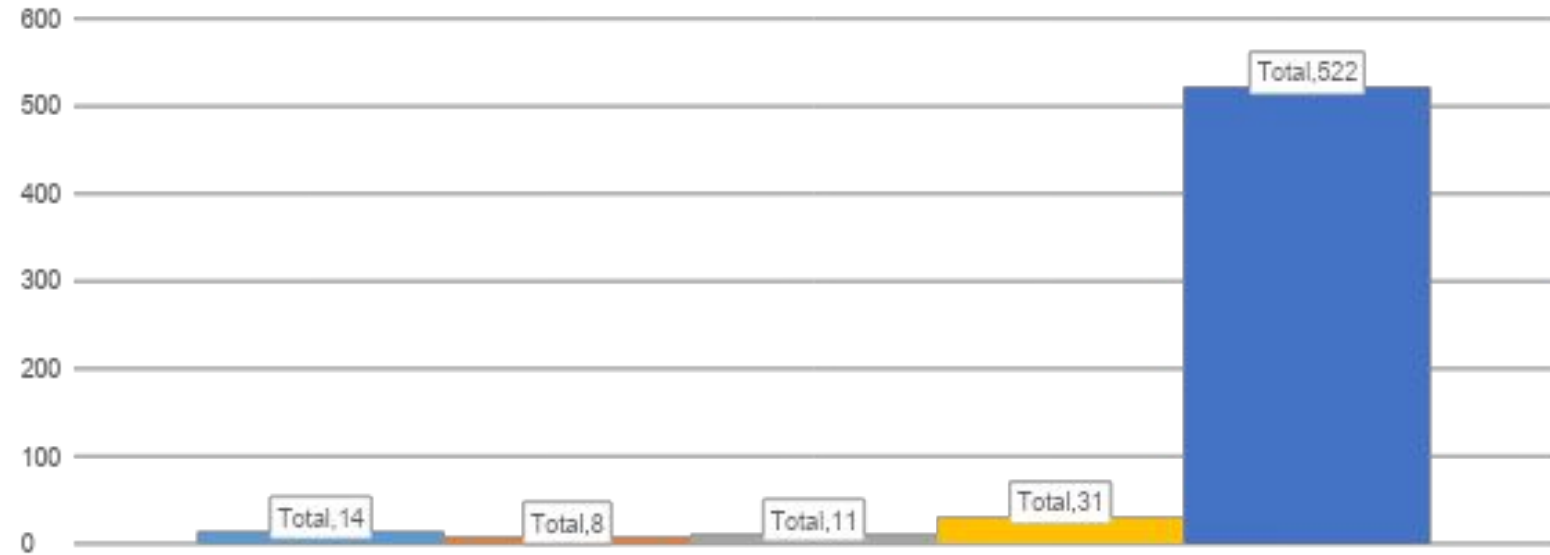
ALL NEW HIRES SINCE 10/1/2019

A	B	H	N	W	Grand Total
7	11	10	16	101	145
4.83%	7.59%	6.90%	11.03%	69.66%	



AEA EMPLOYEES

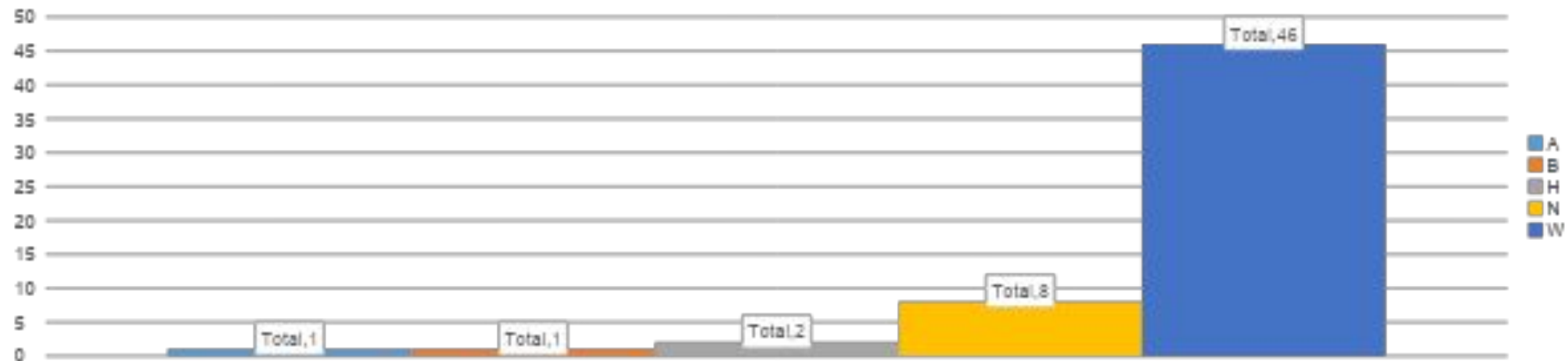
AEA	2018	2019	2020
Asian	2.59%	2.50%	2.39%
Black	1.29%	1.25%	1.37%
Hispanic	1.66%	1.61%	1.88%
Indian or Native America	0.00%	0.00%	0.00%
Not-Identified	0.74%	3.39%	5.29%
White	93.72%	91.25%	89.08%



A	B	H	N	W	Grand Total
14	8	11	31	522	586
2.39%	1.37%	1.88%	5.29%	89.08%	

AEA NEW HIRES SINCE 10/1/2019

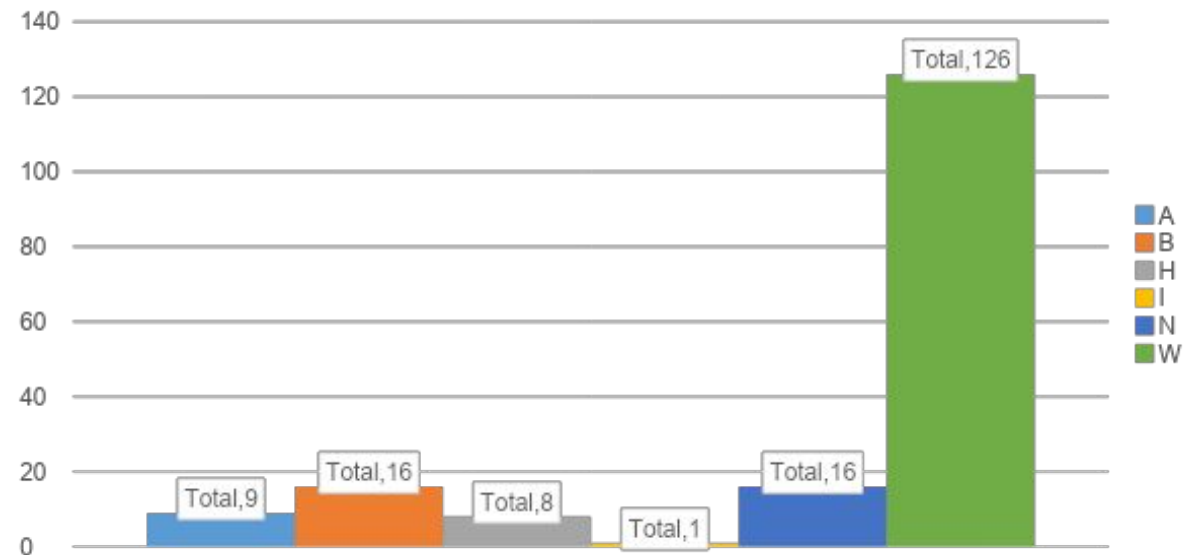
A	B	H	N	W	Grand Total
1	1	2	8	46	58
1.72%	1.72%	3.45%	13.79%	79.31%	



PARAPROFESSIONALS

Paraprofessionals

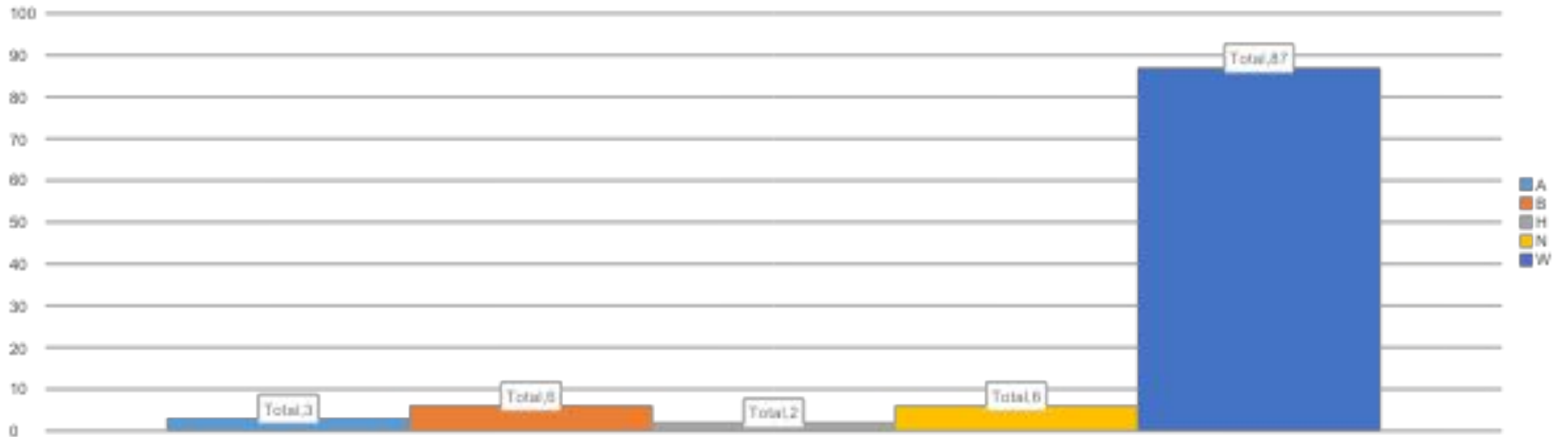
	2018	2019	2020
Asian	2.56%	3.70%	5.11%
Black	6.67%	4.76%	9.09%
Hispanic	2.05%	2.65%	4.55%
Indian or Native America	0.51%	53.00%	0.57%
Not-Identified	0.51%	10.05%	9.09%
White	87.69%	78.31%	71.59%



A	B	H	I	N	W	Grand Total
9	16	8	1	16	126	176
5.11%	9.09%	4.55%	0.57%	9.09%	71.59%	

AAA, ADMINISTRATION/PRINCIPALS,CENTRAL OFFICE, IT, ADMIN ASSISTANTS

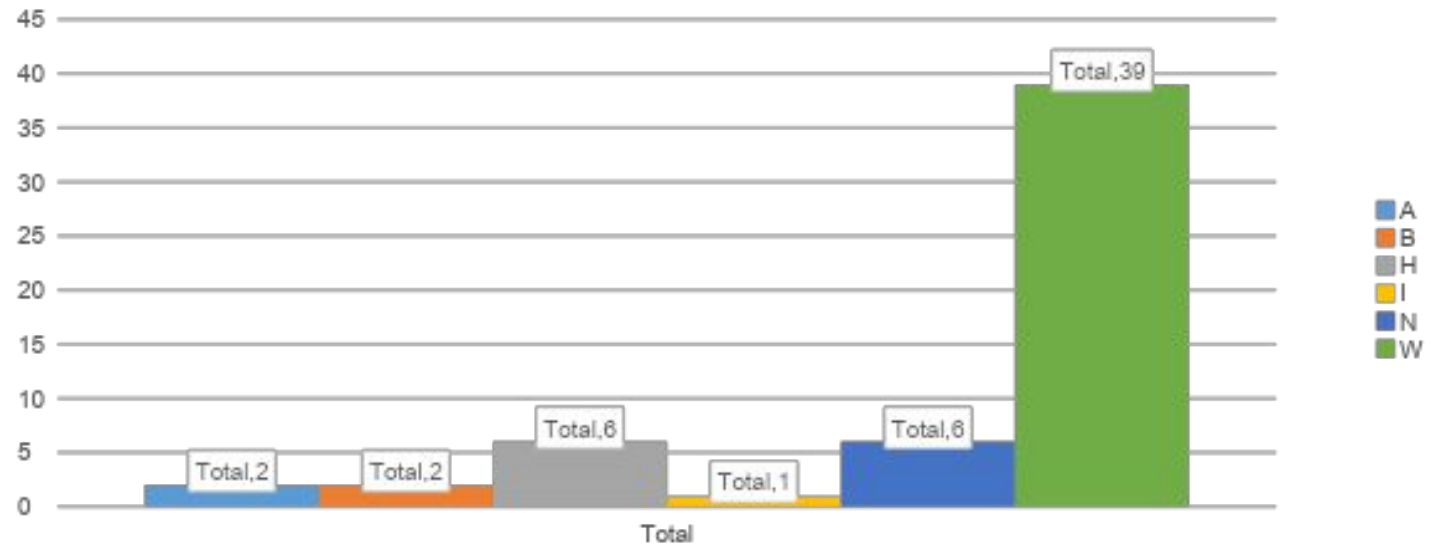
A	B	H	N	W	Grand Total
3	6	2	6	87	104
2.88%	5.77%	1.92%	5.77%	83.65%	



AASP / DAY CARE

AASP / DAY CARE

	2018	2019	2020
Asian	3.08%	3.75%	3.57%
Black	9.23%	11.25%	3.57%
Hispanic	7.69%	7.50%	10.71%
Indian or Native America	1.54%	2.50%	1.79%
Not-Identified	4.62%	8.75%	10.71%
White	73.85%	66.25%	69.64%

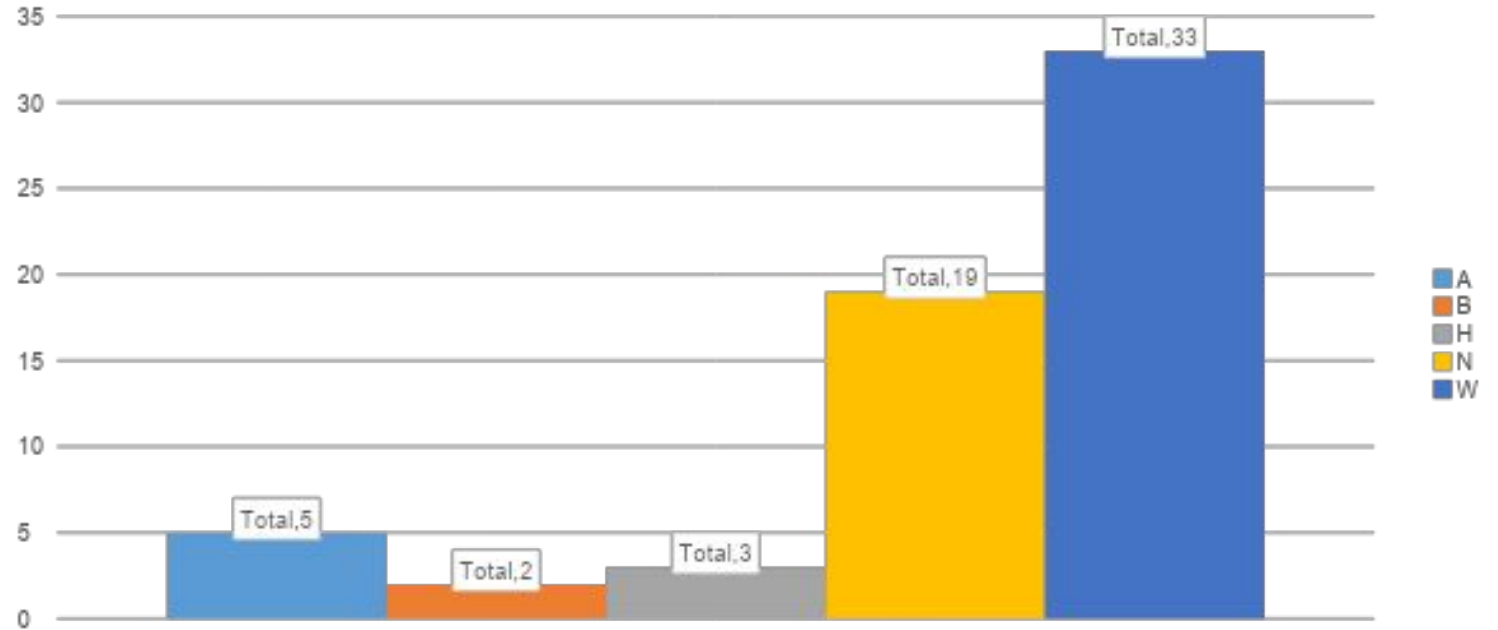


A	B	H	I	N	W	Grand Total
2	2	6	1	6	39	56
3.57%	3.57%	10.71%	1.79%	10.71%	69.64%	

MAINTENANCE/ TRANSPORATION/ FOOD SERVICE

MNT / TRANSP/FOOD

	2018	2019	2020
Asian	7.81%	5.77%	8.06%
Black	2.34%	1.92%	3.23%
Hispanic	3.91%	5.77%	4.84%
Indian or Native America	0.00%	0.00%	0.00%
Not-Identified	23.44%	28.85%	30.65%
White	62.50%	57.69%	53.23%



A	B	H	N	W	Grand Total
5	2	3	19	33	62
8.06%	3.23%	4.84%	30.65%	53.23%	

2020 ARLINGTON STUDENTS AND STAFF ETHNICITY BREAKDOWN

