

# AHSBC Presentation

---

September 4, 2018

# Schematic Design

---

- Traffic Study

# Traffic Study





This aerial site plan illustrates the layout of W.A. Pierce Field and its surrounding infrastructure. The plan includes the following labeled areas and features:

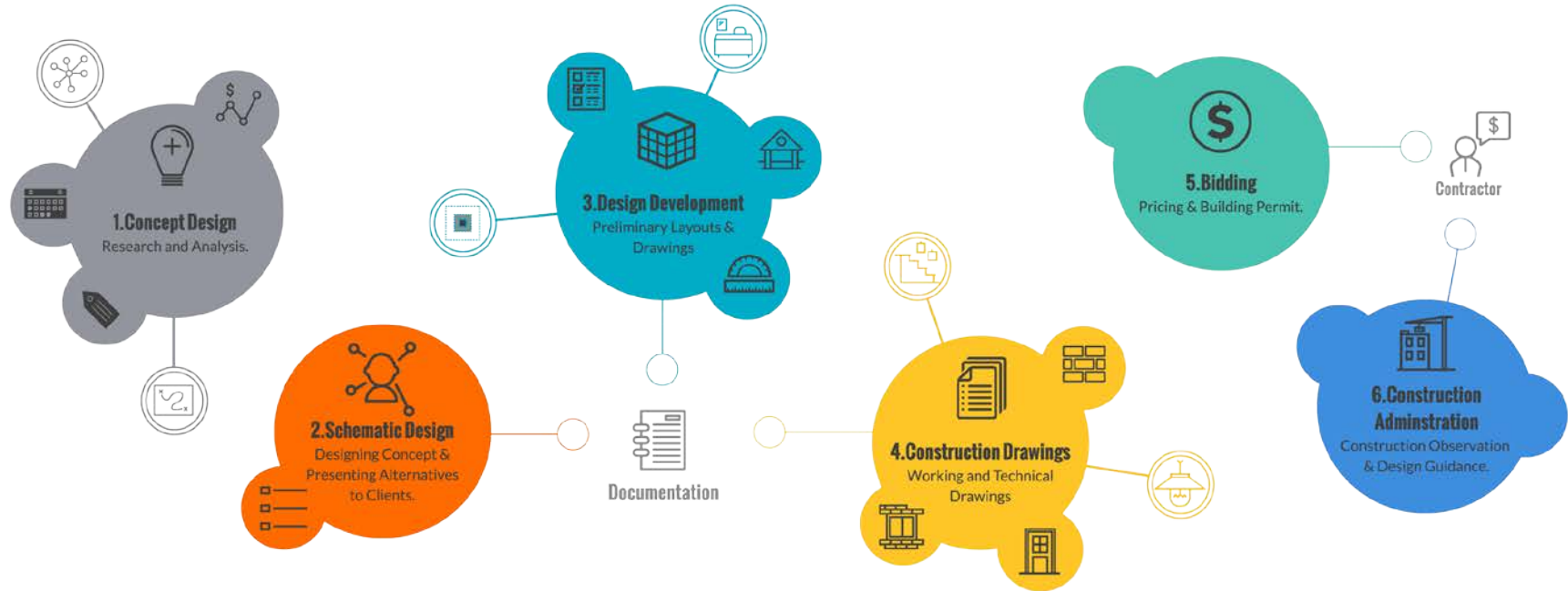
- Baseball Field**: Located in the upper left, outlined with a dashed blue line.
- Engineered Barrier, Typ.**: Indicated near the top left.
- W.A. Pierce Field**: The central sports field area.
- New Toilet Facility** and **Existing Concessions**: Located near the center of the field.
- Drop Off Area**: Two designated areas for vehicle drop-off, one near the center and one near the bottom right.
- Entry**: The main entrance to the facility.
- 1st Floor** and **2nd Floor**: Designated areas for the main building.
- Pre-School Play**: A designated area for preschool play.
- Preschool Entry** and **Preschool Drop Off Loop**: Located near the bottom right.
- Plaza / Outdoor Dining**: A designated area for outdoor dining.
- Brigham Square Apartments**: Located to the right of the main building.
- Relocated Basketball Court**: Located to the right of the main building.
- Bicycle Racks**: Two designated areas for bicycle racks, one near the center and one near the bottom left.
- Outdoor Amphitheater**: Located near the bottom left.
- Fire Lane**: A designated lane for fire access.
- Main Entry**: The main entrance to the facility.
- School Parking Area**: Located near the bottom center.
- CVS**: A designated area for CVS.
- Ramp and Stair Access**: Located near the bottom center.
- Outdoor Classrooms**: Located near the bottom center.
- Practice Field**: Located to the right of the main field.
- Relocated Softball Field**: Located to the right of the main field.
- Bikeway Connector**: Located near the top right.
- Minute Man Commuter Bikeway**: Located near the top right.
- Summer St.**: A street located near the top right.
- Mill Brook Dr.**: A street located near the bottom right.
- Massachusetts Avenue**: A street located near the bottom center.
- Grove St.**: A street located near the top left.
- 94 spaces**: A designated parking area with 94 spaces.
- 95 spaces**: A designated parking area with 95 spaces.
- 55 spaces**: A designated parking area with 55 spaces.
- 6 spaces**: A designated parking area with 6 spaces.
- Stop & Shop**: A designated area for a stop and shop.
- Sidewalk**: A designated area for a sidewalk.
- Schooler Ct.**: A street located near the bottom left.
- Compass Rose**: A compass rose indicating North (N) is towards the top left.

# Schematic Design

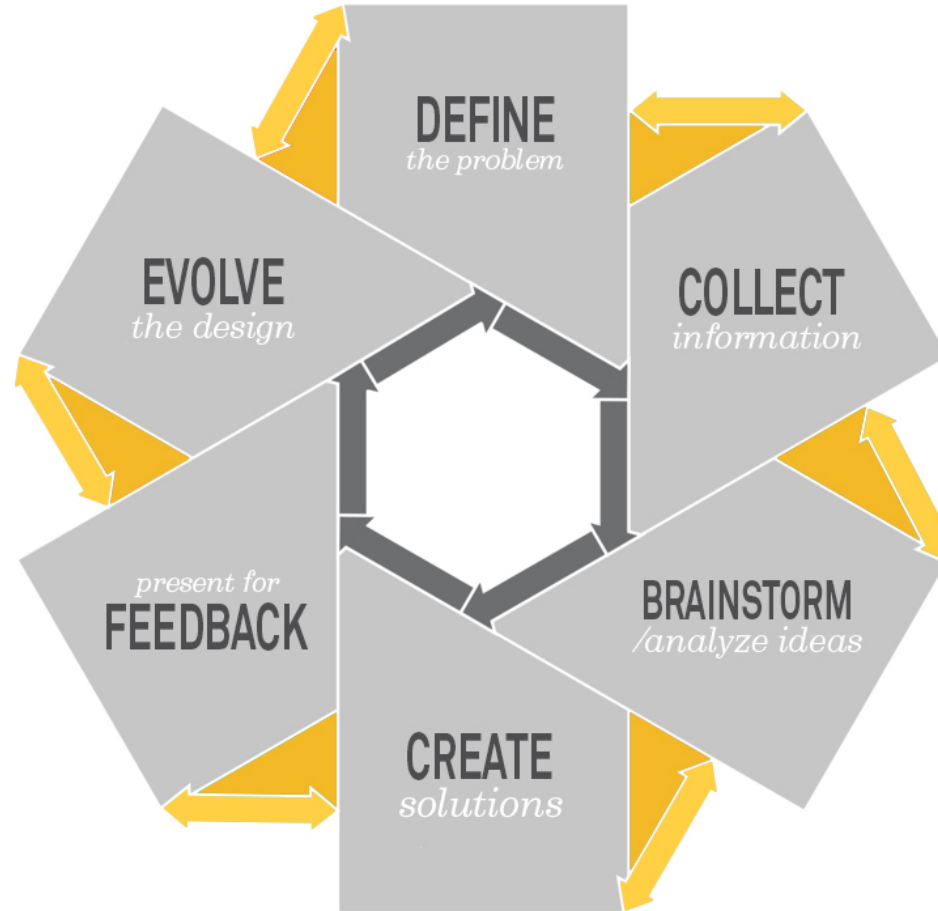
---

- Traffic Study
- Design Process

# Design Process

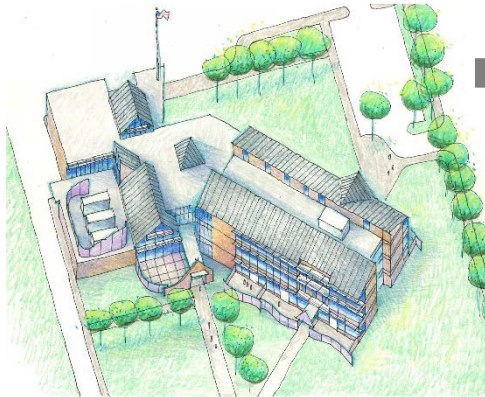


# Design Process



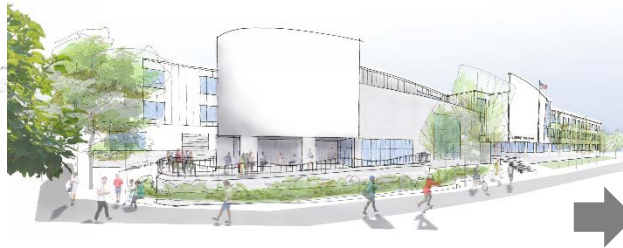


# Design Process – Thompson Elem.





# Design Process – Winthrop MHS



# Design Process – Coolidge Corner



# Schematic Design

---

- Traffic Study
- Design Process
- Schematic Design Work Plan

# Schematic Design Work Plan

---

- School Building Committee Meetings
- Community Forums
- Other Meetings