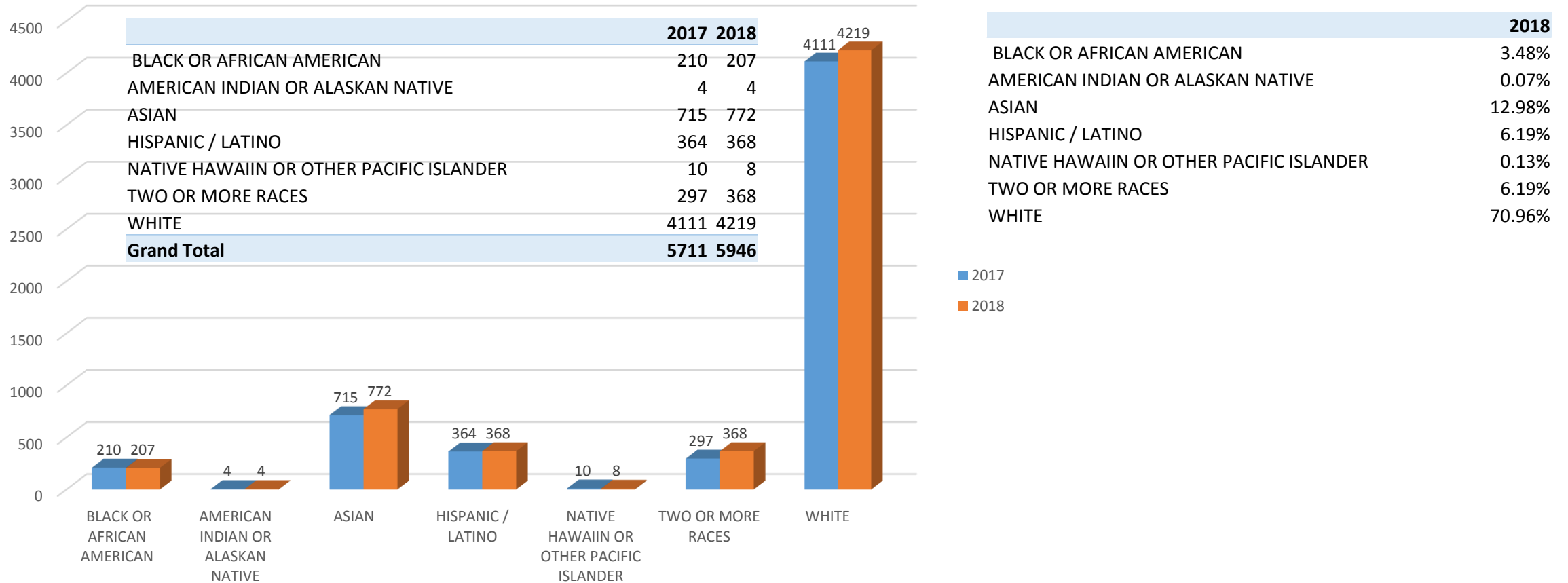


ARLINGTON PUBLIC SCHOOLS 2018 DIVERSITY REPORT

OCTOBER 25, 2018

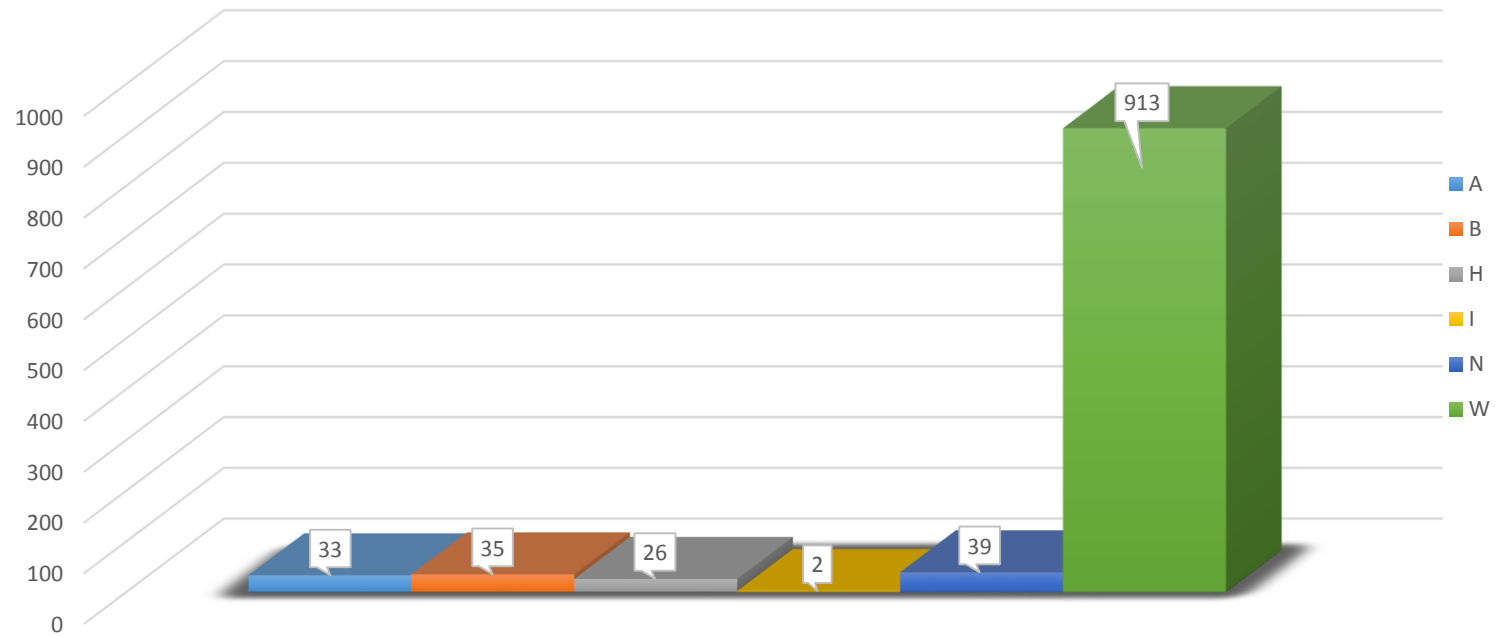
Student Data as of October 1, 2018



ALL EMPLOYEES

(EXCEPT SUBSTITUTES, COACHES AND COMMUNITY ED.)

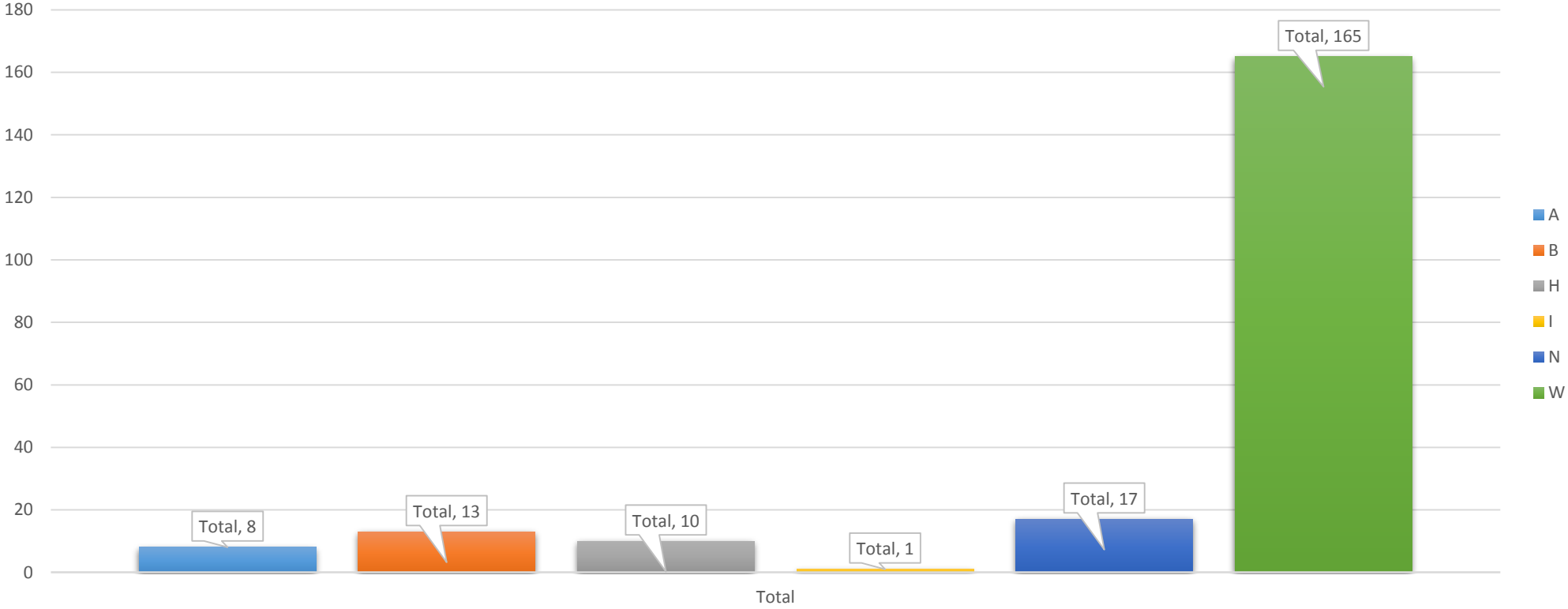
	2017	2018
Asian	3.01%	3.15%
Black	2.71%	3.34%
Hispanic	2.40%	2.48%
Indian or Native America	0.10%	0.19%
Not-Identified	2.91%	3.72%
White	88.88%	87.12%



A	B	H	I	N	W	Total
33	35	26	2	39	913	1048
3.15%	3.34%	2.48%	0.19%	3.72%	87.12%	

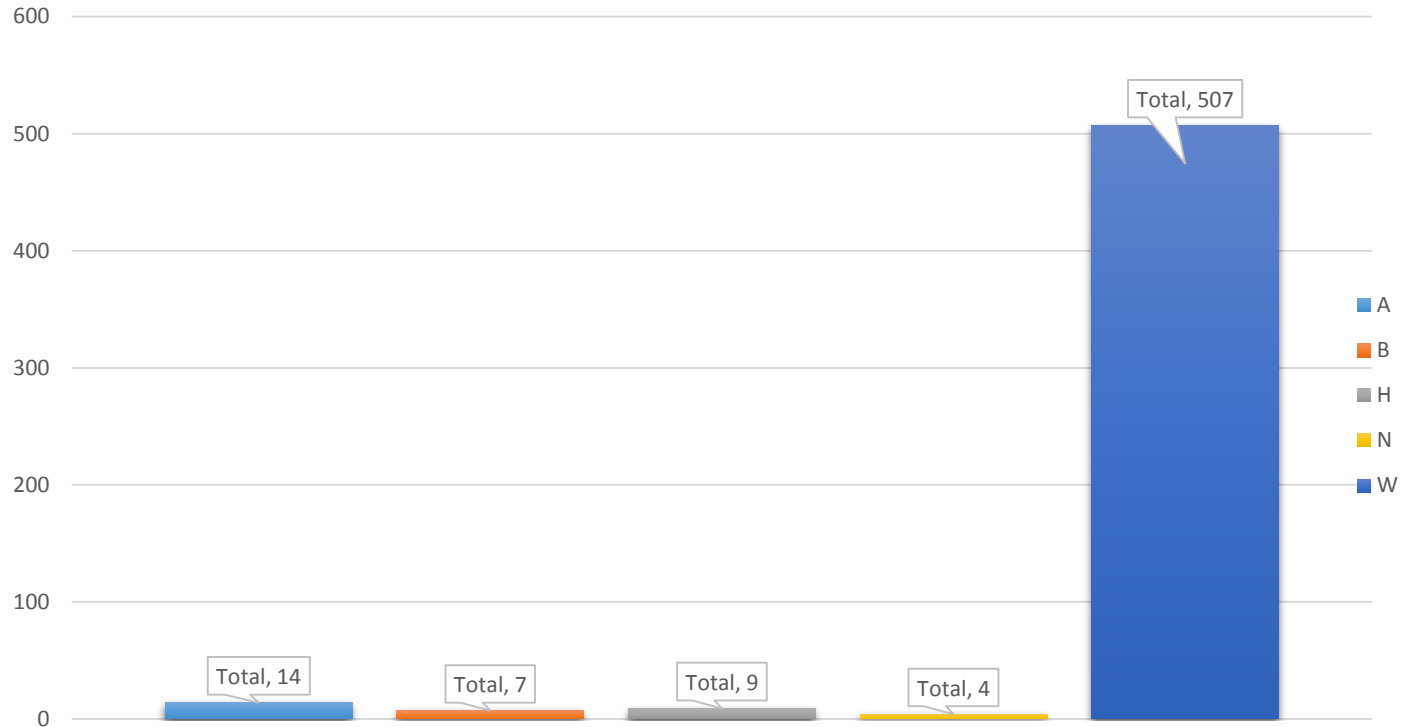
ALL NEW HIRES SINCE 10/1/2017

A	B	H	I	N	W	Total
8	13	10	1	17	165	214
3.74%	6.07%	4.67%	0.47%	7.94%	77.10%	



AEA Employees

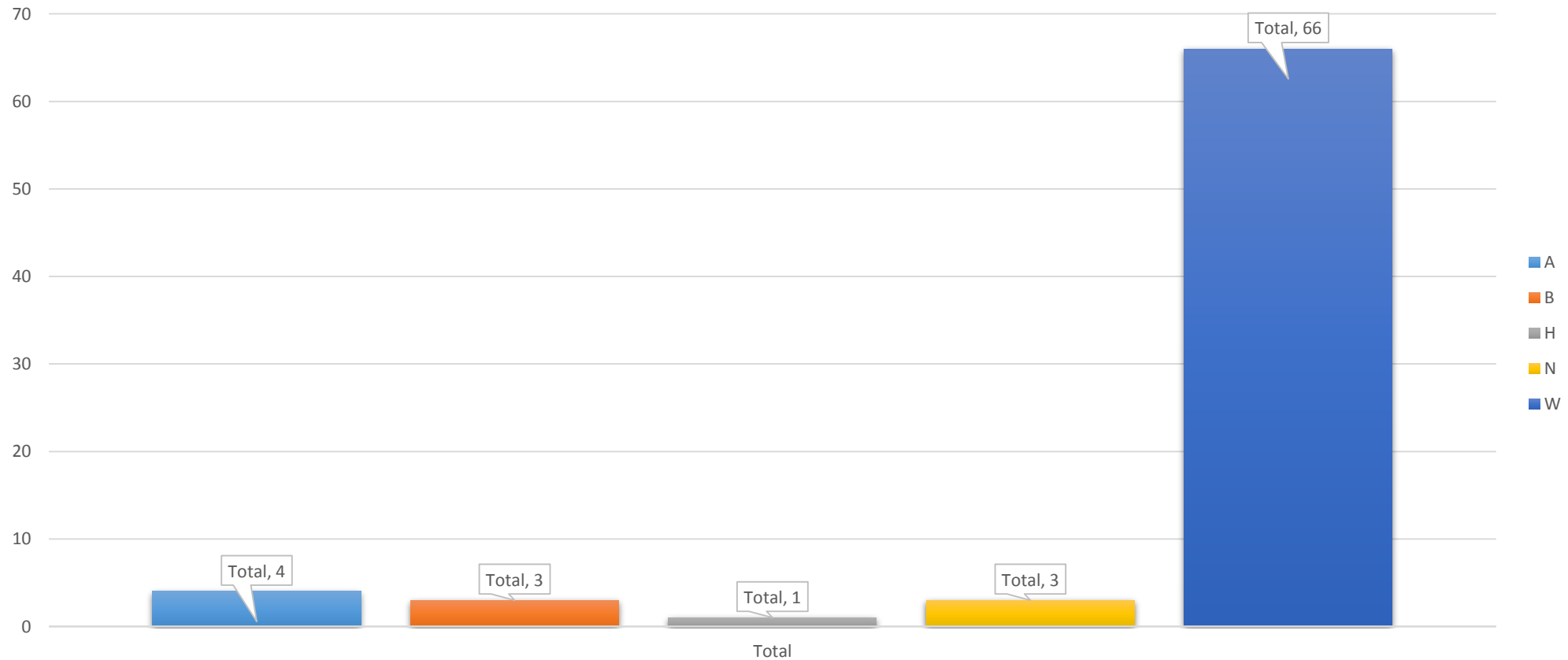
	2017	2018
Asian	2.14%	2.59%
Black	1.00%	1.29%
Hispanic	1.75%	1.66%
Indian or Native America	0.00%	0.00%
Not-Identified	2.00%	0.74%
White	95.00%	93.72%



A	B	H	I	N	W	Total
14	7	9		4	507	541
2.59%	1.29%	1.66%		0.74%	93.72%	

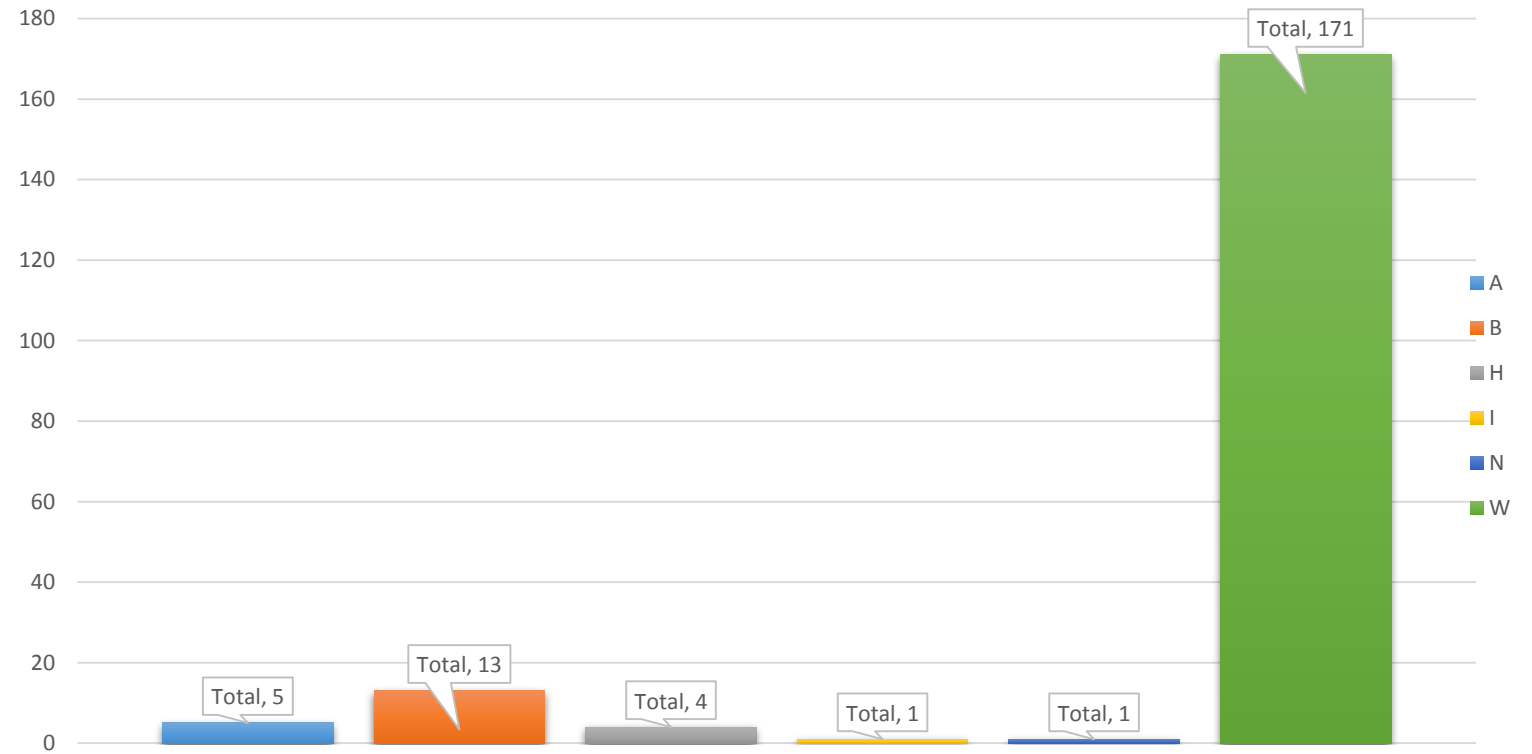
AEA NEW HIRES SINCE 10/1/2017

A	B	H	I	N	W	Total
4	3	1	0	3	66	77
5.19%	3.90%	1.30%		3.90%	85.71%	



TEACHING ASSISTANTS/BSP/TUTORS

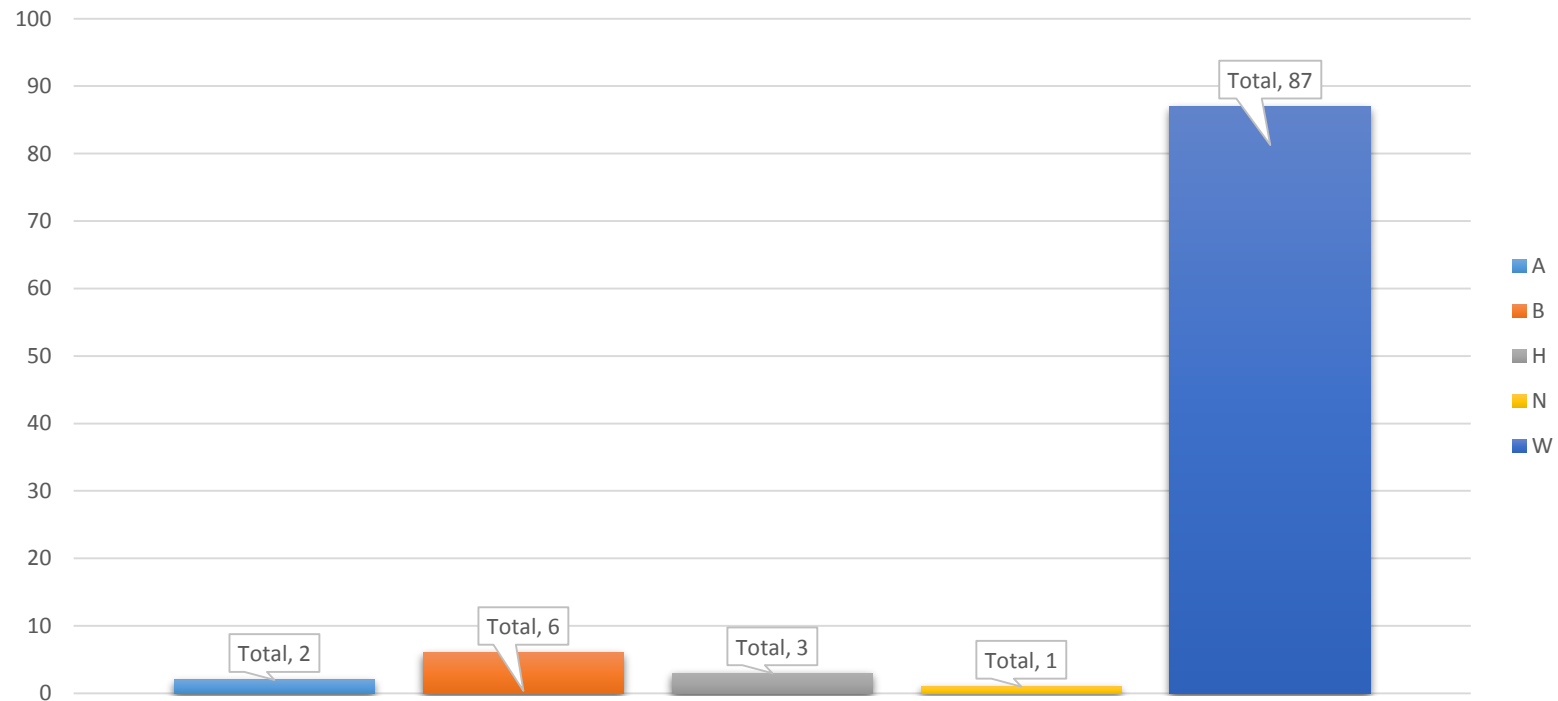
	2017	2018
Asian	3.24%	2.56%
Black	5.41%	6.67%
Hispanic	1.62%	2.05%
Indian or Native America	0.54%	0.51%
Not-Identified	0.00%	0.51%
White	89.19%	87.69%



A	B	H	I	N	W	Total
5	13	4	1	1	171	195
2.56%	6.67%	2.05%	0.51%	0.51%	87.69%	

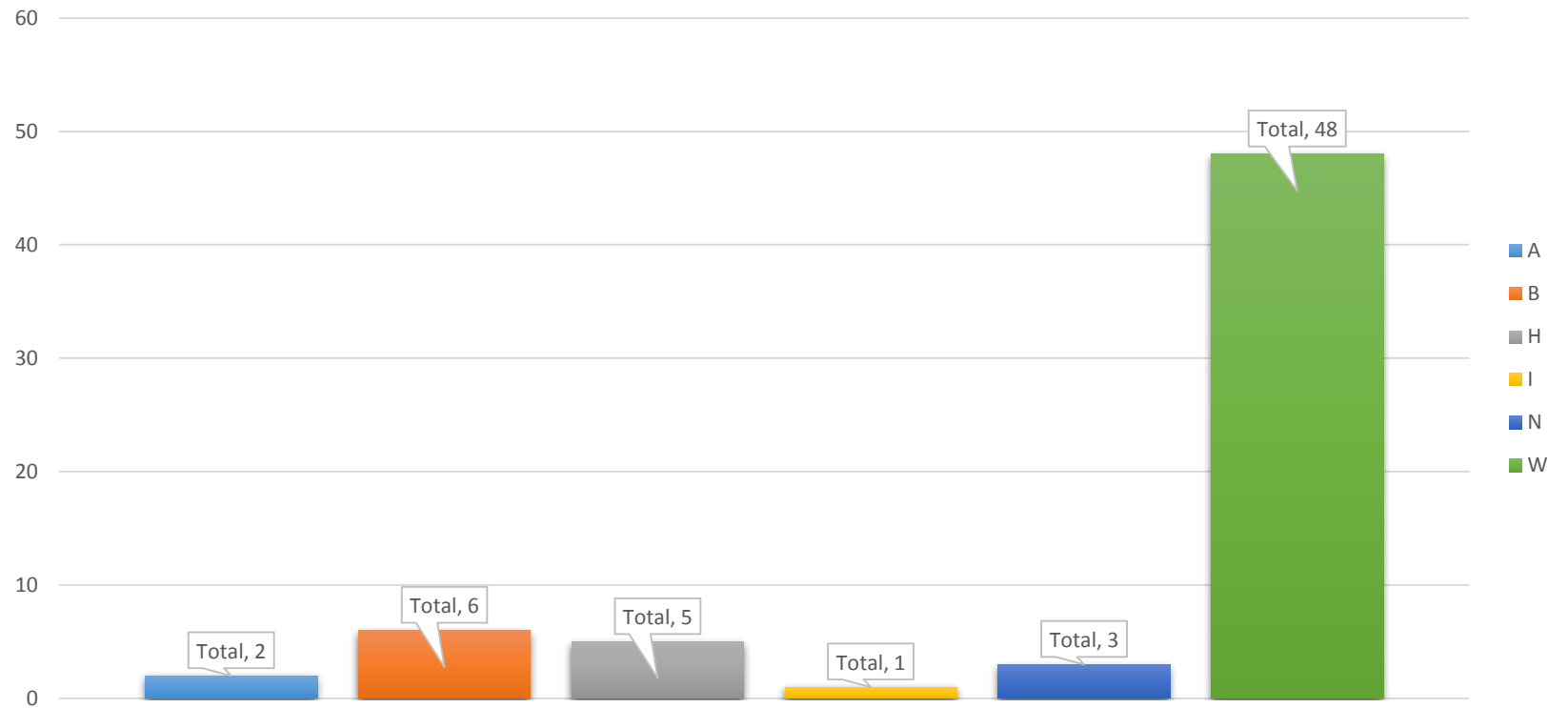
AAA, ADMINISTRATION/PRINCIPALS,CENTRAL OFFICE, IT, ADMIN ASSISTANTS

A	B	H	N	W	Total
2	6	3	1	87	99
2.02%	6.06%	3.03%	1.01%	87.88%	



AASP / DAY CARE

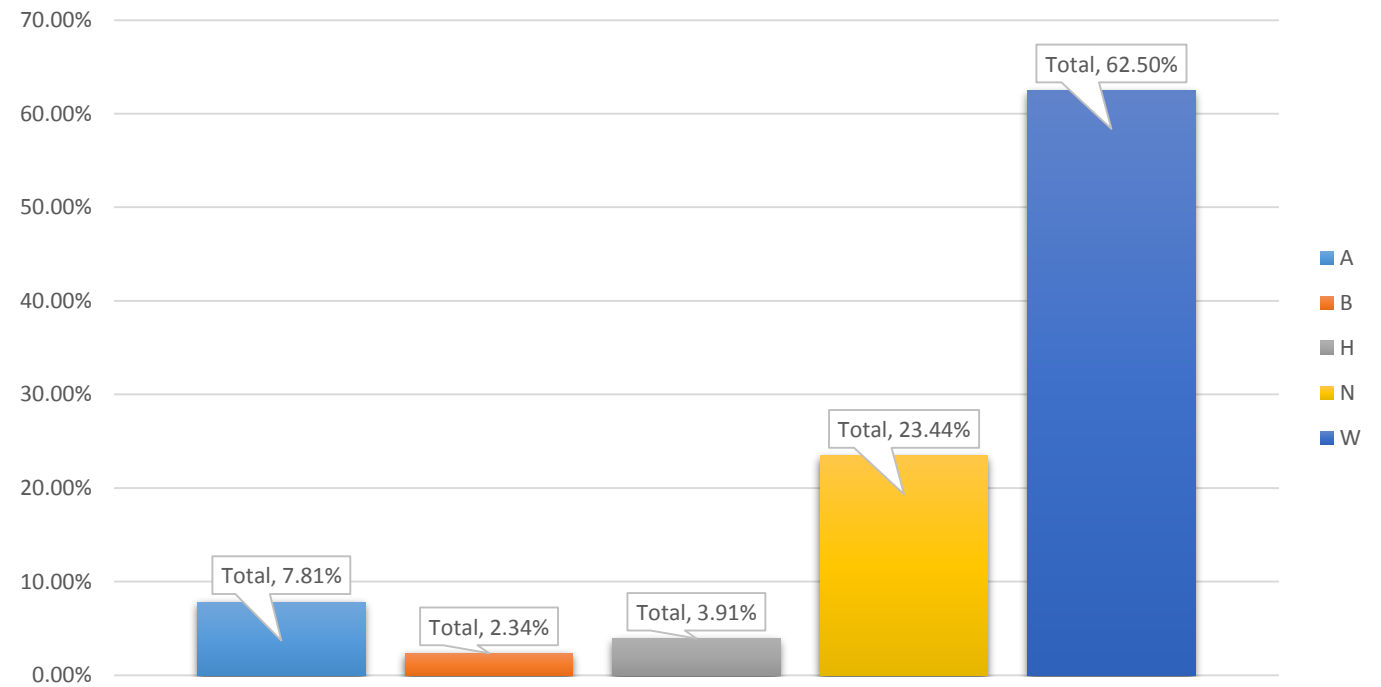
	2017	2018
Asian	3.85%	3.08%
Black	3.85%	9.23%
Hispanic	5.77%	7.69%
Indian or Native America	0.00%	1.54%
Not-Identified	7.69%	4.62%
White	78.85%	73.85%



A	B	H	I	N	W	Total
2	6	5	1	3	48	65
3.08%	9.23%	7.69%	1.54%	4.62%	73.85%	

MAINTENANCE/ TRANSPORATION/ FOOD SERVICE

	2017	2018
Asian	6.57%	7.81%
Black	3.65%	2.34%
Hispanic	5.11%	3.91%
Indian or Native America	0.00%	0.00%
Not-Identified	16.79%	23.44%
White	67.88%	62.50%



A	B	H	N	W	Total
10	3	5	30	80	128
7.81%	2.34%	3.91%	23.44%	62.50%	

2018 Arlington Students and Staff Ethnicity Breakdown

