

# AHSBC Presentation

---

November 20, 2018

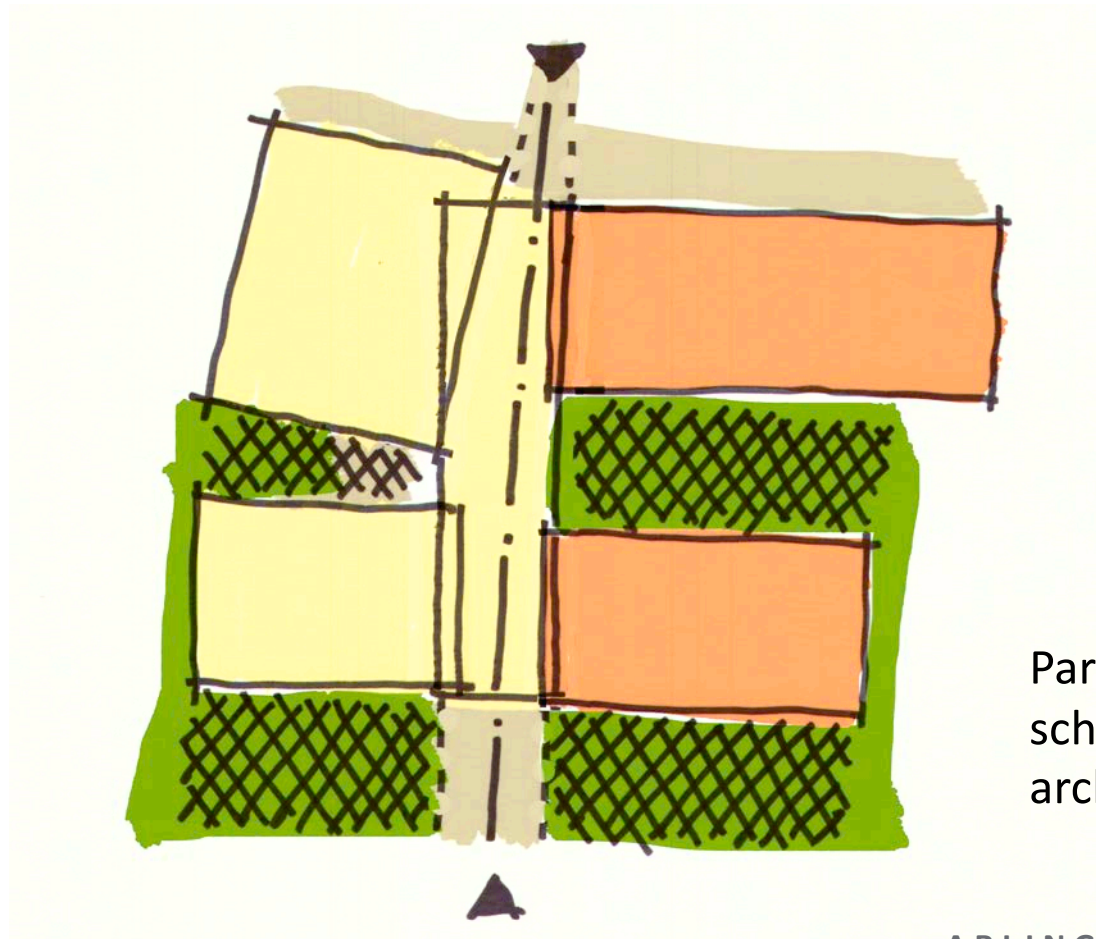
ARLINGTON HIGH SCHOOL

HM  
FH HMFH ARCHITECTS

# Schematic Design

---

## AHS Parti



Parti = the general  
scheme of an  
architectural design

ARLINGTON HIGH SCHOOL

# Schematic Design

---

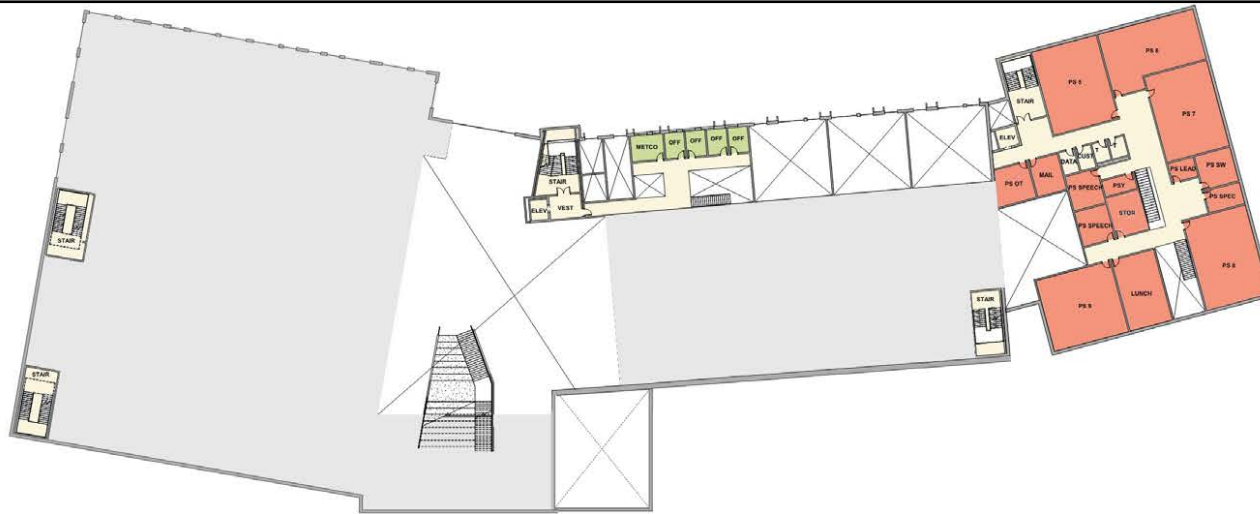
- Floor plan progress

[illegible]



# Mezzanine

---



ARLINGTON HIGH SCHOOL  
PROGRESS 11/20/18

# Second Floor



HIGH SCHOOL  
1/20/18

# Third Floor



ARLINGTON HIGH SCHOOL  
PROGRESS 11/20/18

# Fourth Floor



ARLINGTON HIGH SCHOOL  
PROGRESS 11/20/18



# Fifth Floor

---



ARLINGTON HIGH SCHOOL  
PROGRESS 11/20/18

# Schematic Design

---

- Floor plan progress
- Exterior design progress

A



ARLINGTON HIGH SCHOOL  
PROGRESS 11/20/18



A

ARLINGTON HIGH SCHOOL  
PROGRESS 11/20/18





A

ARLINGTON HIGH SCHOOL  
PROGRESS 11/20/18



A

ARLINGTON HIGH SCHOOL  
PROGRESS 11/20/18





B



ARLINGTON HIGH SCHOOL  
PROGRESS 11/20/18



B

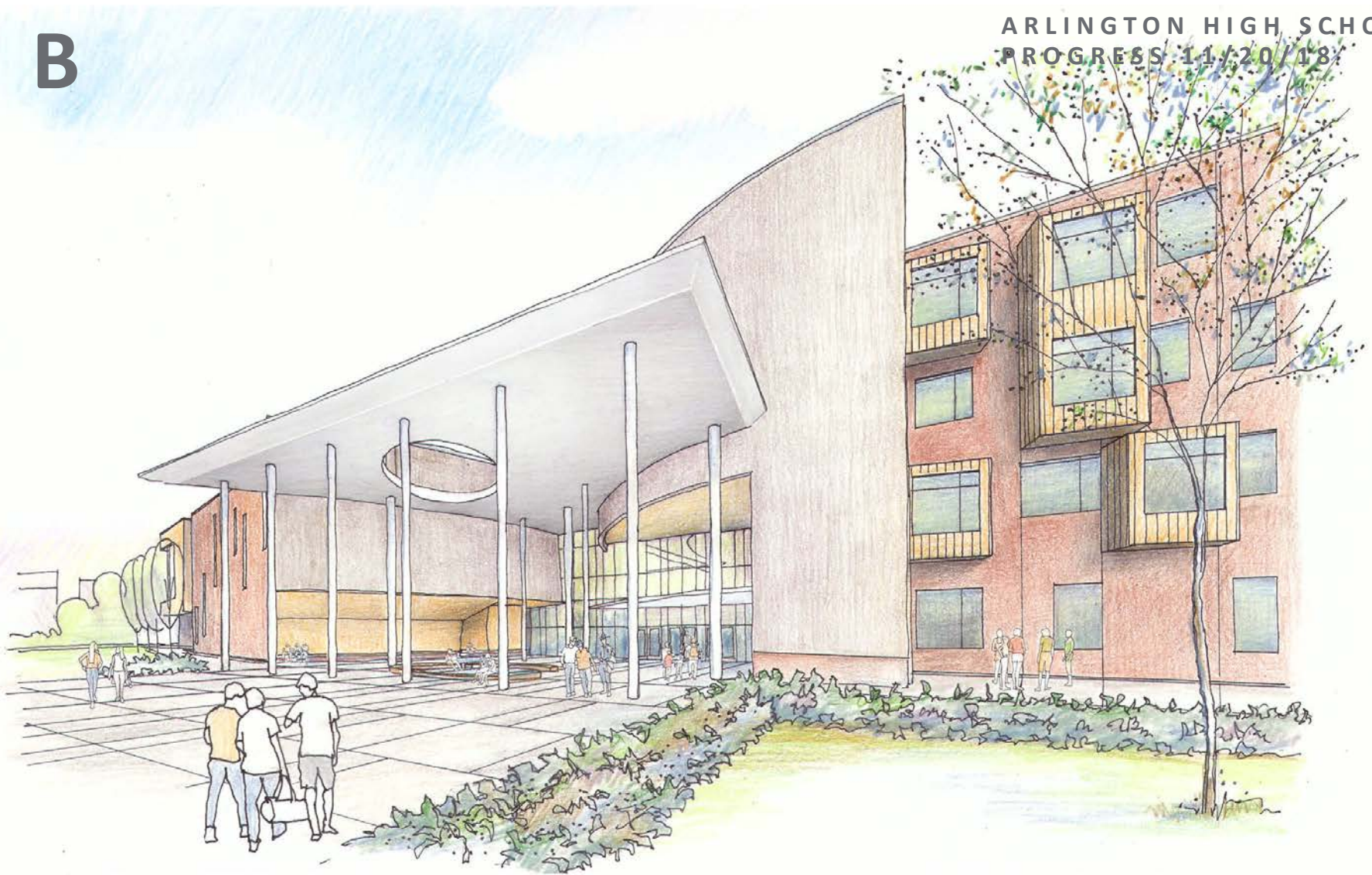
ARLINGTON HIGH SCHOOL  
PROGRESS 11/20/18





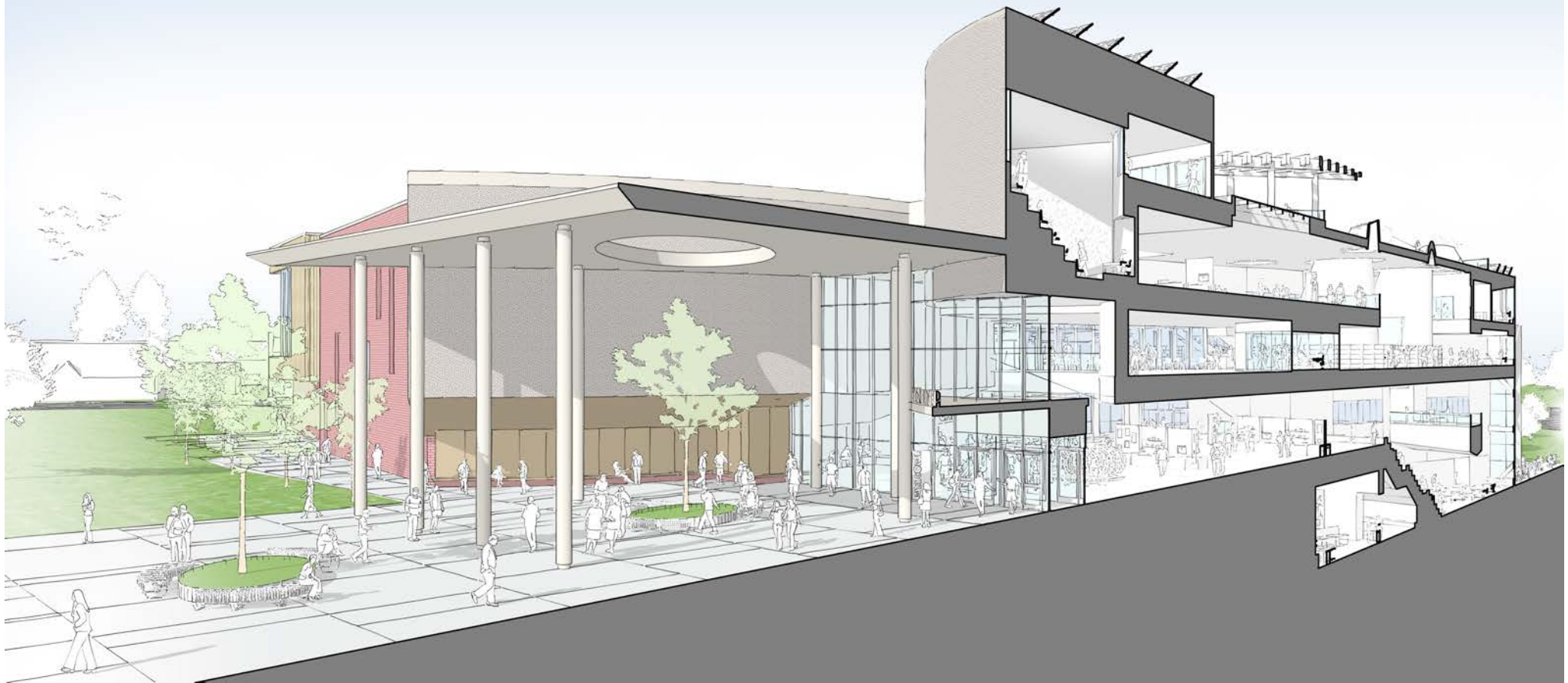
B

ARLINGTON HIGH SCHOOL  
PROGRESS 11/20/18



B

ARLINGTON HIGH SCHOOL  
PROGRESS 11/20/18





C



ARLINGTON HIGH SCHOOL  
PROGRESS 11/20/18



C

ARLINGTON HIGH SCHOOL  
PROGRESS 11/20/18





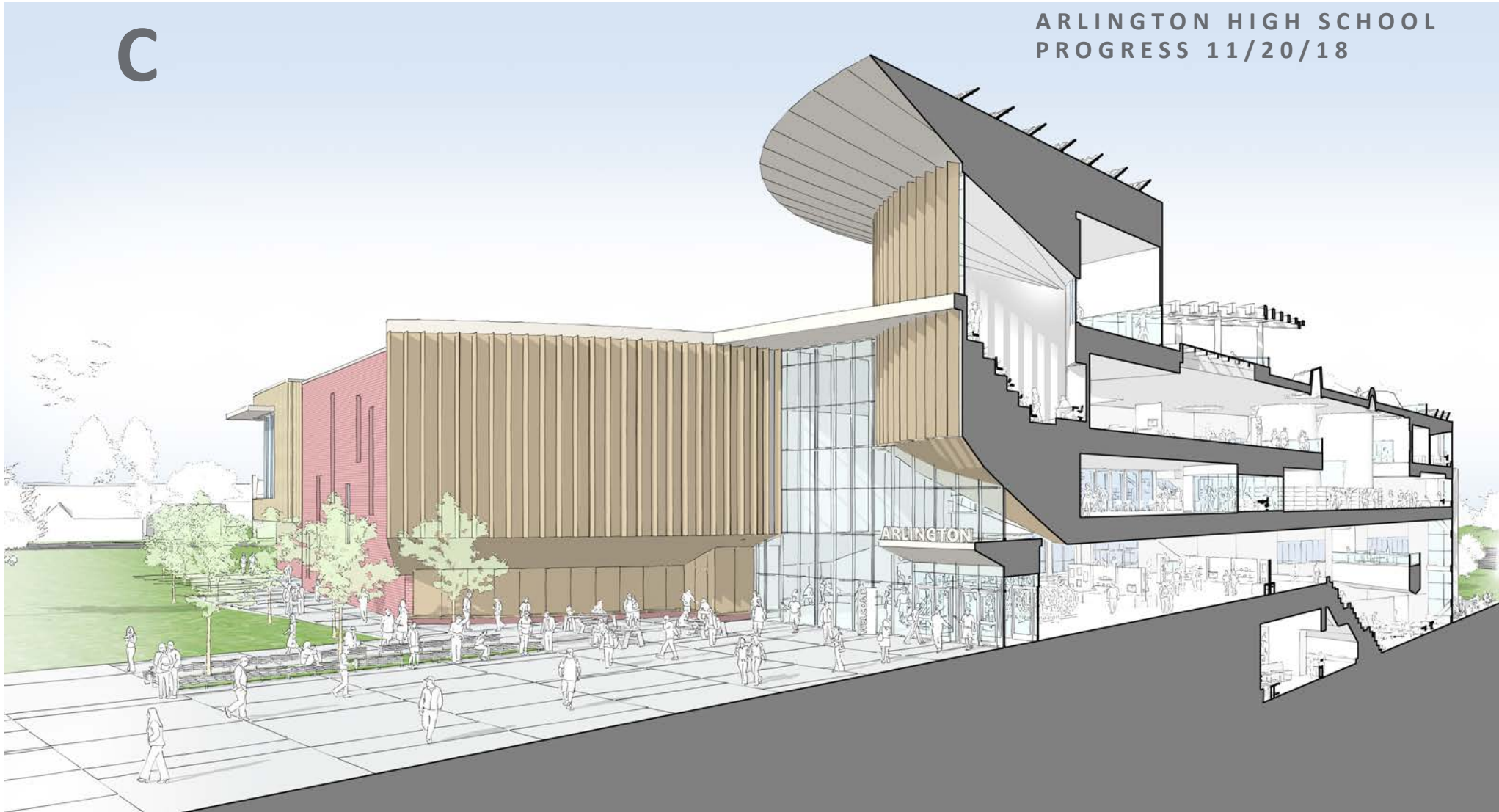
C

ARLINGTON HIGH SCHOOL  
PROGRESS 11/20/18



C

ARLINGTON HIGH SCHOOL  
PROGRESS 11/20/18



# Schematic Design

---

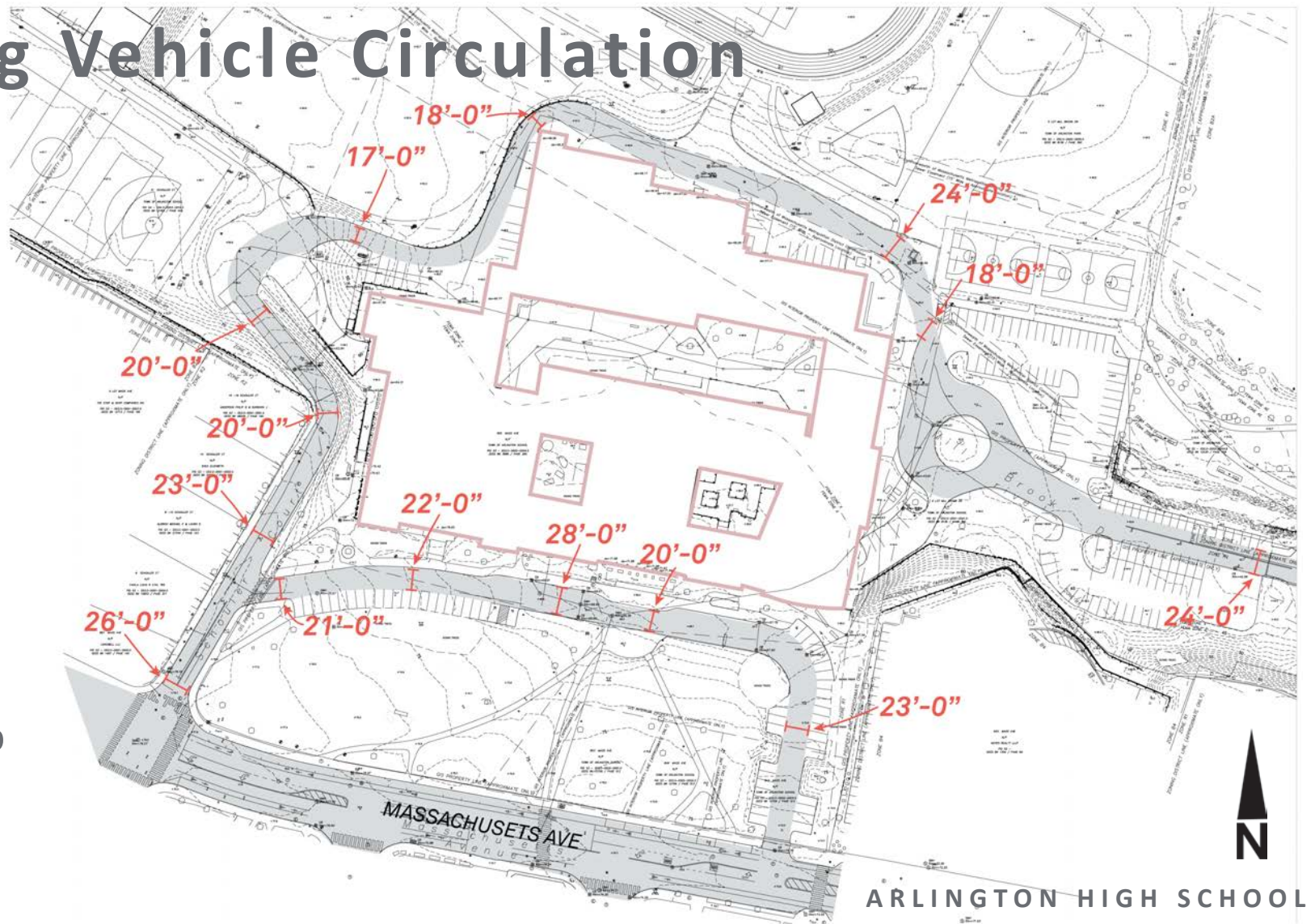
- Floor plan progress
- Exterior design progress
- Traffic update



# Existing Vehicle Circulation

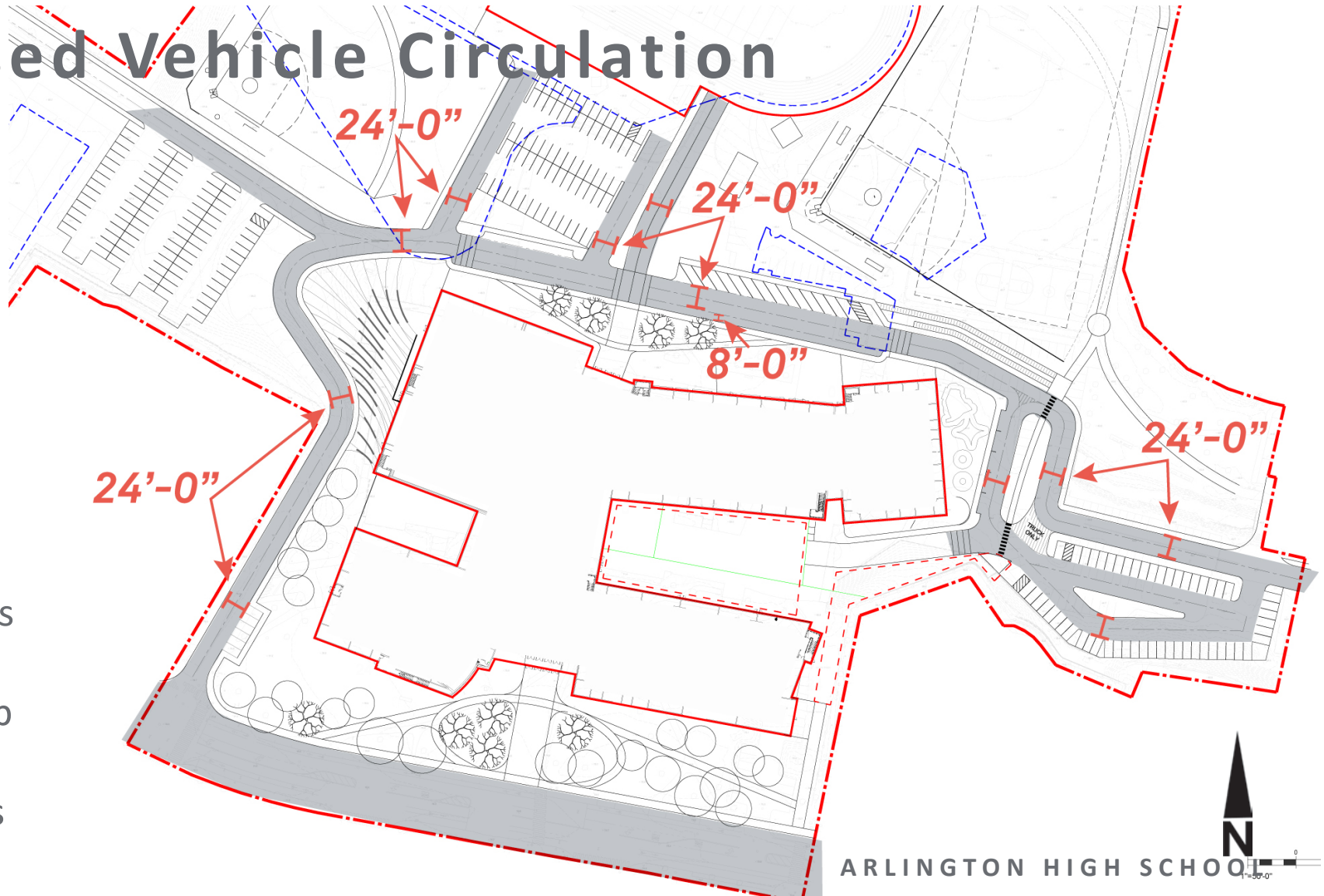
Length of  
queuing =  
745' / 38 cars

Length of drop  
off =  
480' / 22 cars





# Proposed Vehicle Circulation

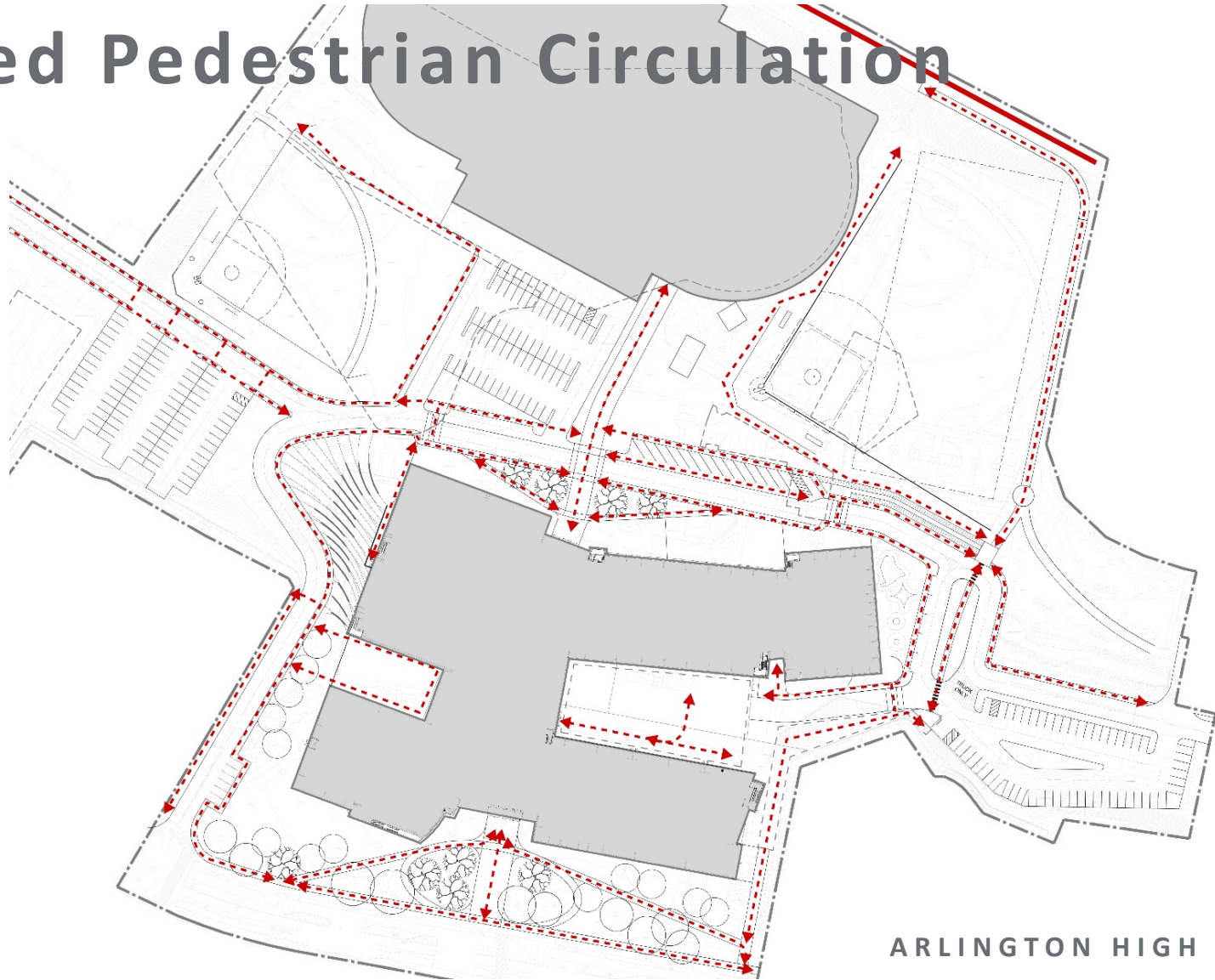


Length of  
queuing =  
1,140' / 57 cars

Length of drop  
off =  
1,000' / 45 cars

ARLINGTON HIGH SCHOOL

# Proposed Pedestrian Circulation



ARLINGTON HIGH SCHOOL