

# Community Presentation

November 28, 2018



ARLINGTON HIGH SCHOOL

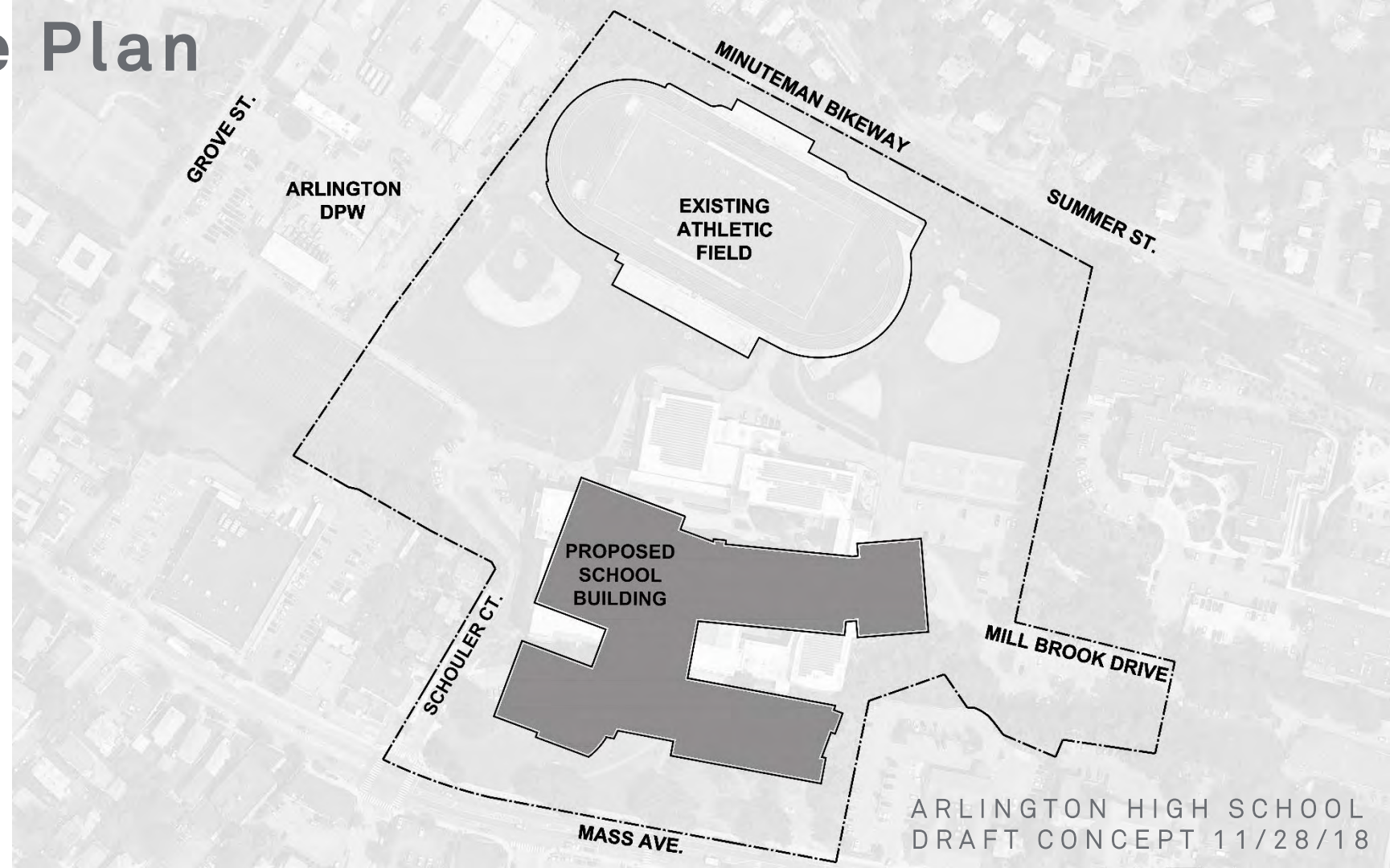
**SKANSKA**



**HMFH ARCHITECTS**

# Schematic Site Plan Development

# Site Plan



GROVE ST.

ARLINGTON  
DPW

MINUTEMAN BIKEWAY

SUMMER ST.

EXISTING  
ATHLETIC  
FIELD

SCHOULER CT.

PROPOSED  
SCHOOL  
BUILDING

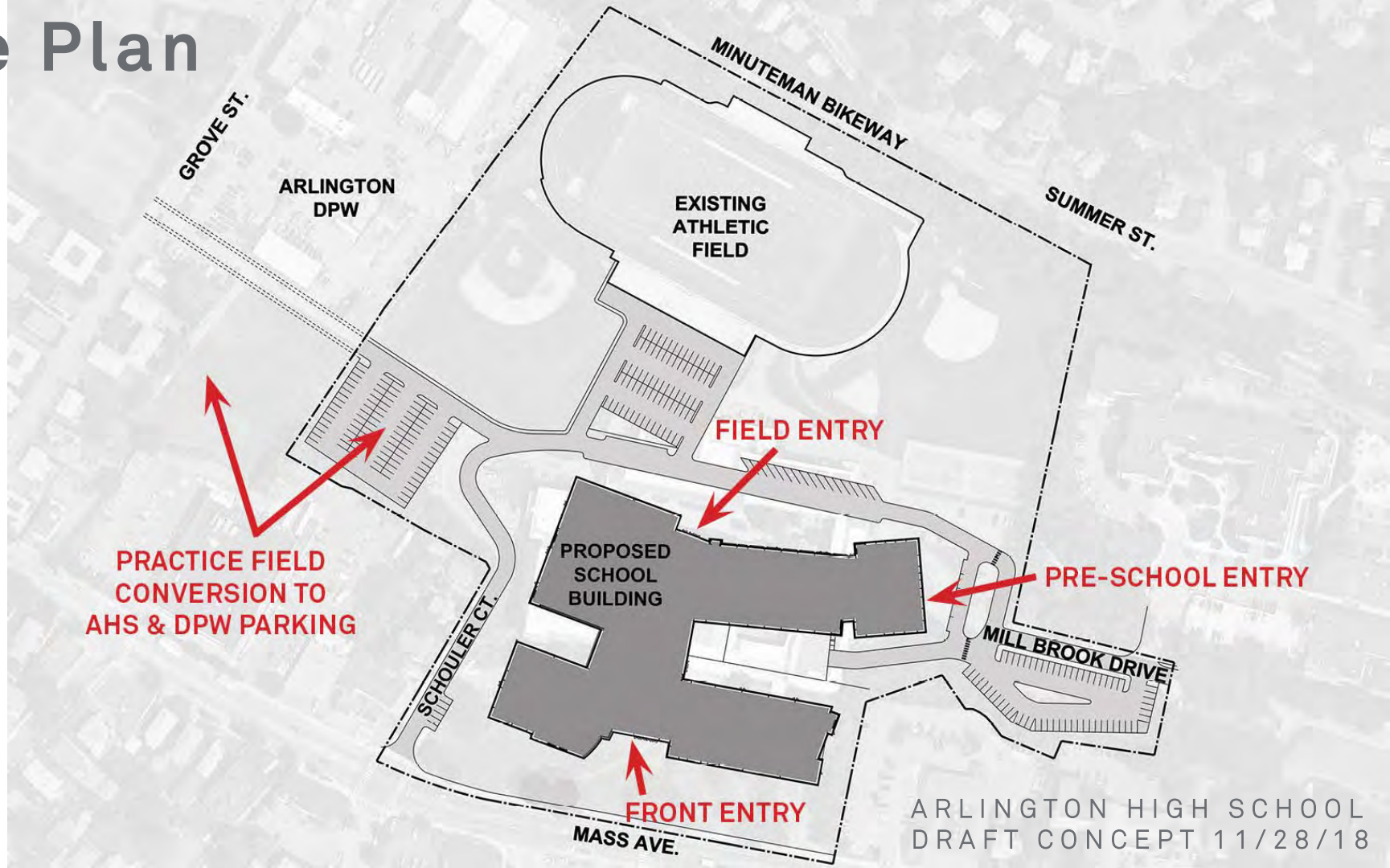
MILL BROOK DRIVE

MASS AVE.

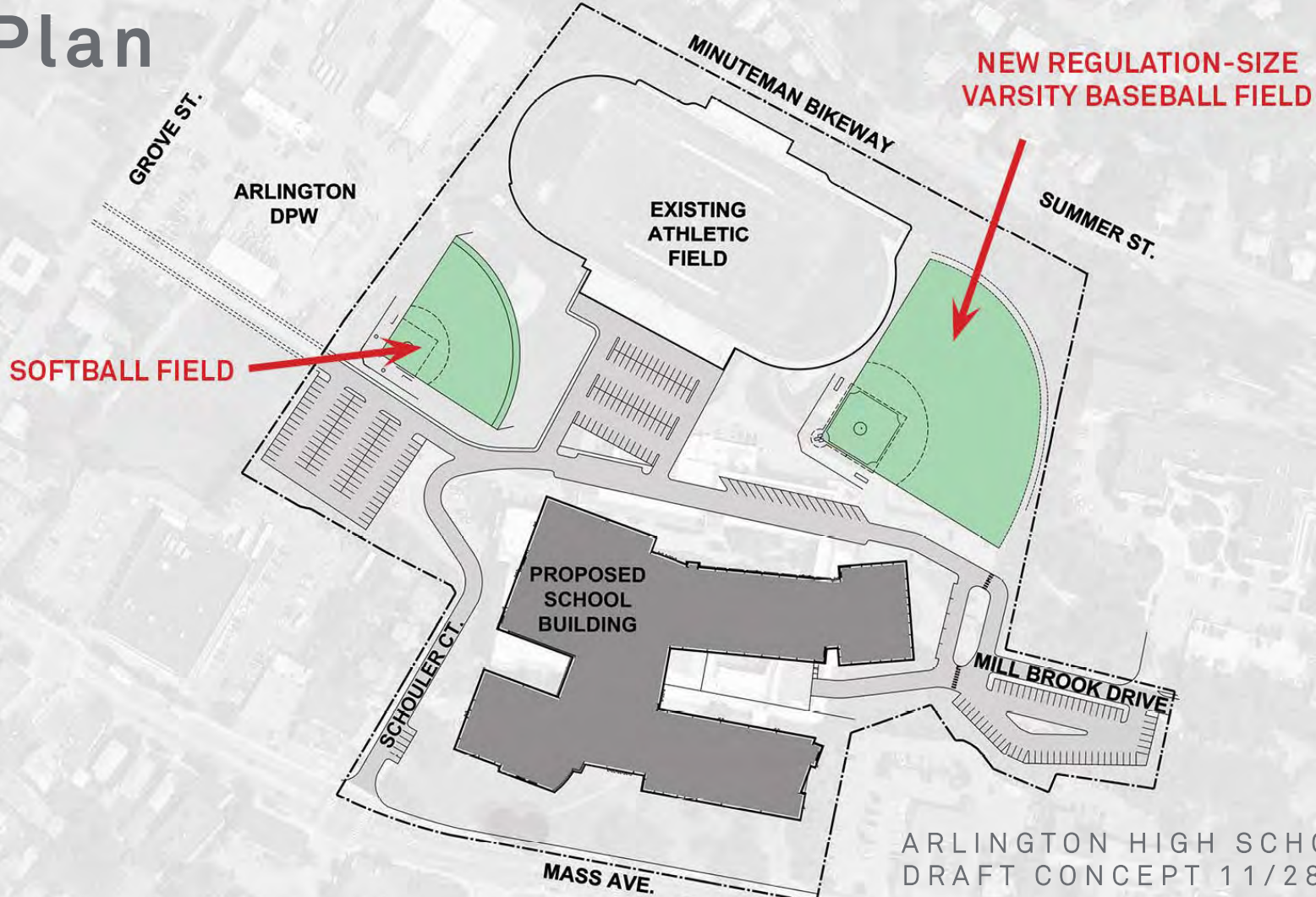
ARLINGTON HIGH SCHOOL  
DRAFT CONCEPT 11/28/18



# Site Plan



# Site Plan

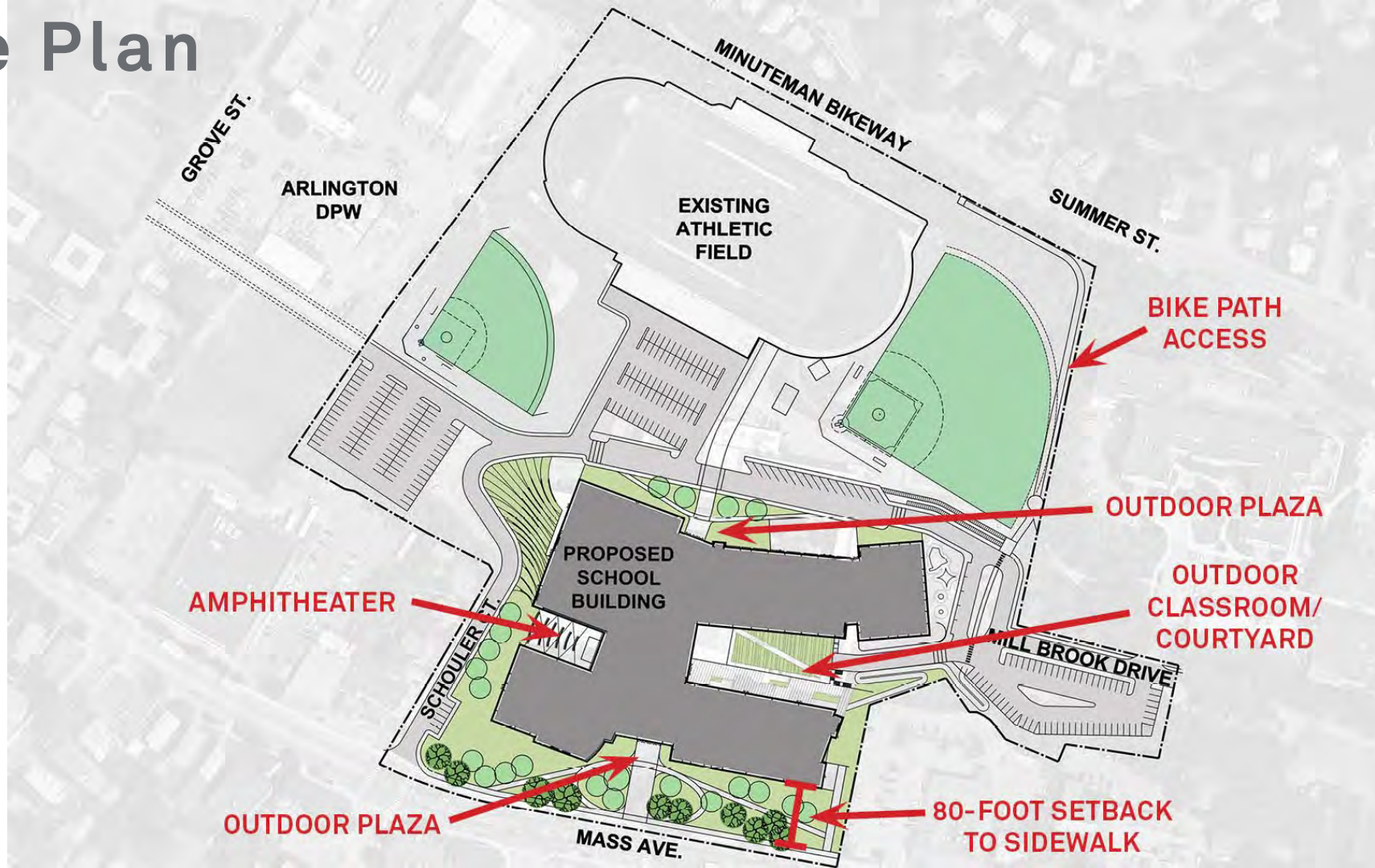




# Site Plan

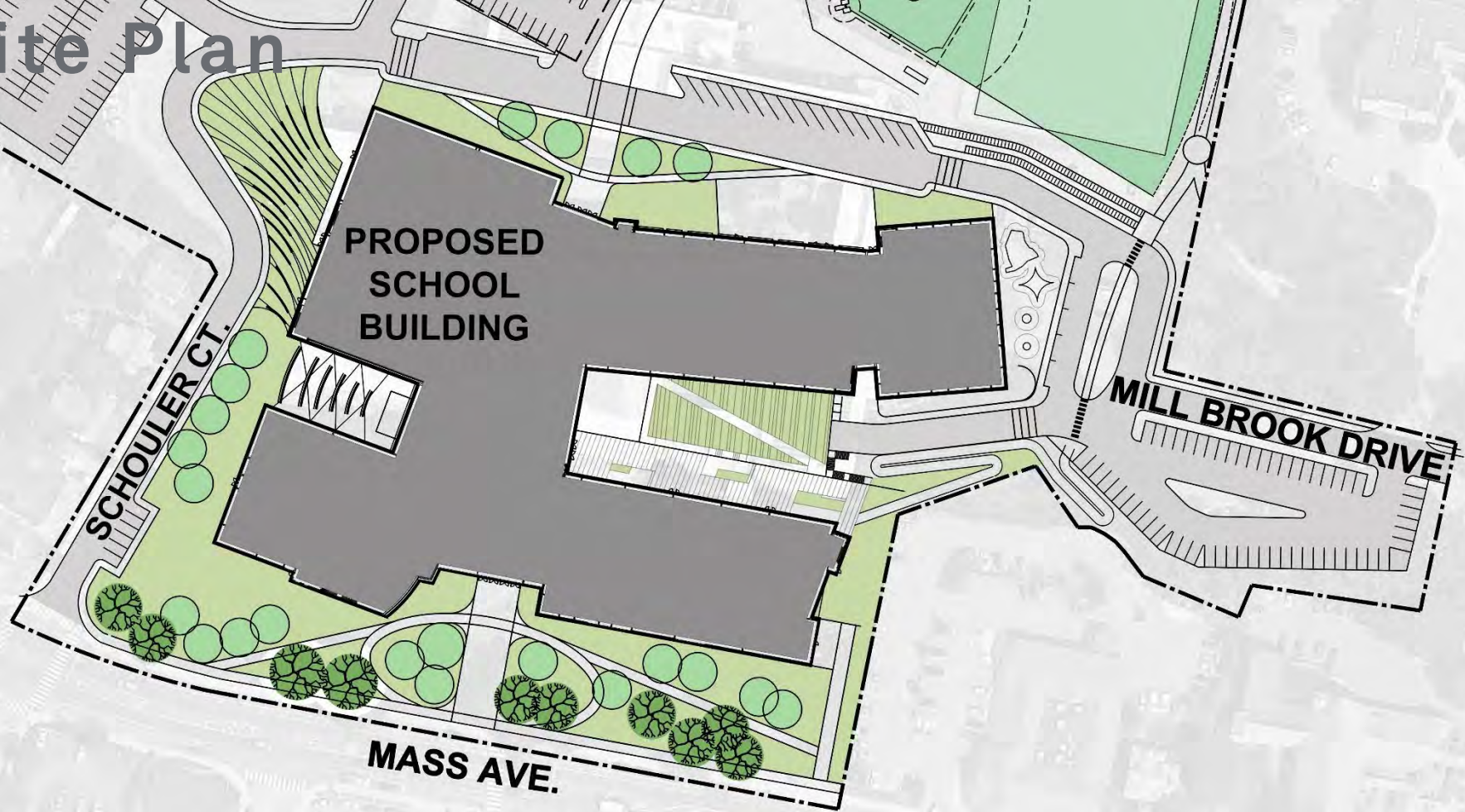


# Site Plan





# Site Plan



ARLINGTON HIGH SCHOOL  
DRAFT CONCEPT 11/28/18



# Site features:

- Improved pedestrian & vehicle access
- Increased parking
- Drop off/pick-up at two main entries
- Access from Bikeway, increased bike racks
- Retains Mass Ave trees & 600' of green frontage with 80' setback
- New amphitheater, outdoor classrooms, etc.
- Competition baseball field

# **Draft traffic plan:** (Working with TAC to refine)

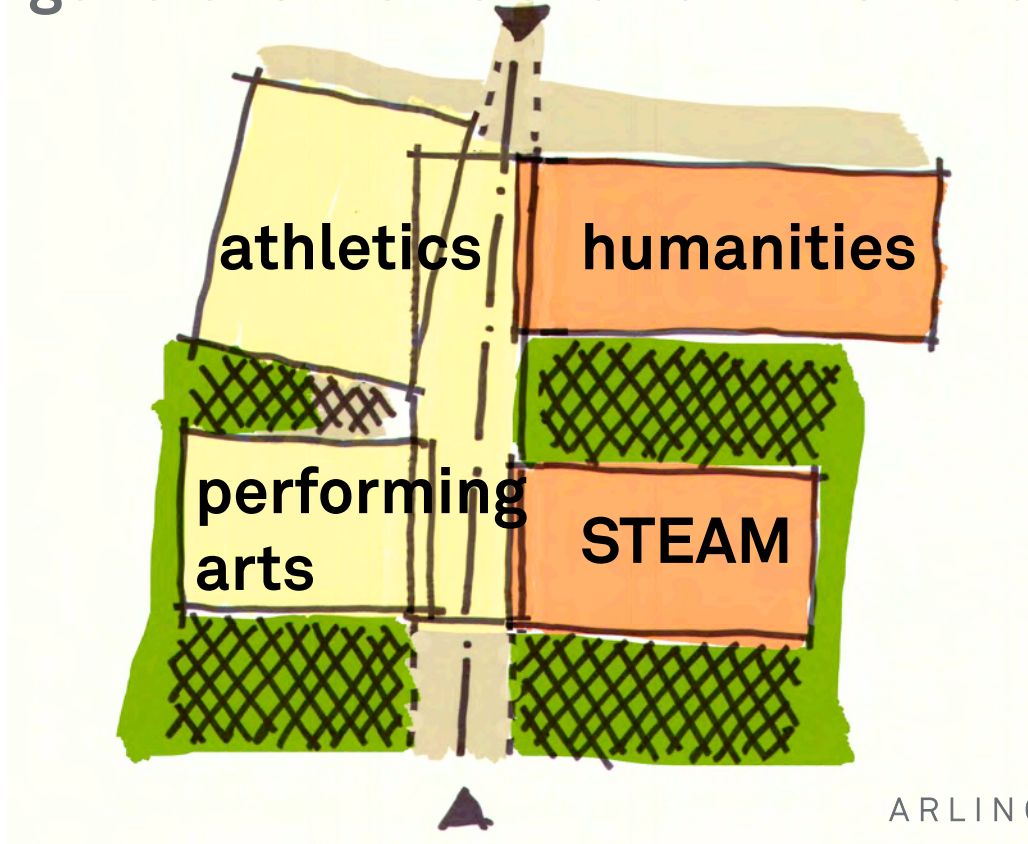
- Two-way drive Schouler Ct to Millbrook Dr
- Two-way drop off/pick-up @ Field Side
- Live drop off/pick-up @ Mass Ave westbound
- Improved signalization light @ Schouler & Mass Ave
- Proposed new light @ Millbrook & Mill St
- Preschool drop off/pick-up loop
- Safe pedestrian circulation: sidewalks, access from Bikeway



# Schematic Building Interior Development

# AHS Parti

parti = the general scheme of an architectural design





# Central spine concepts



ARLINGTON HIGH SCHOOL  
DRAFT CONCEPT 11/28/18

# Central spine concepts



ARLINGTON HIGH SCHOOL  
DRAFT CONCEPT 11/28/18

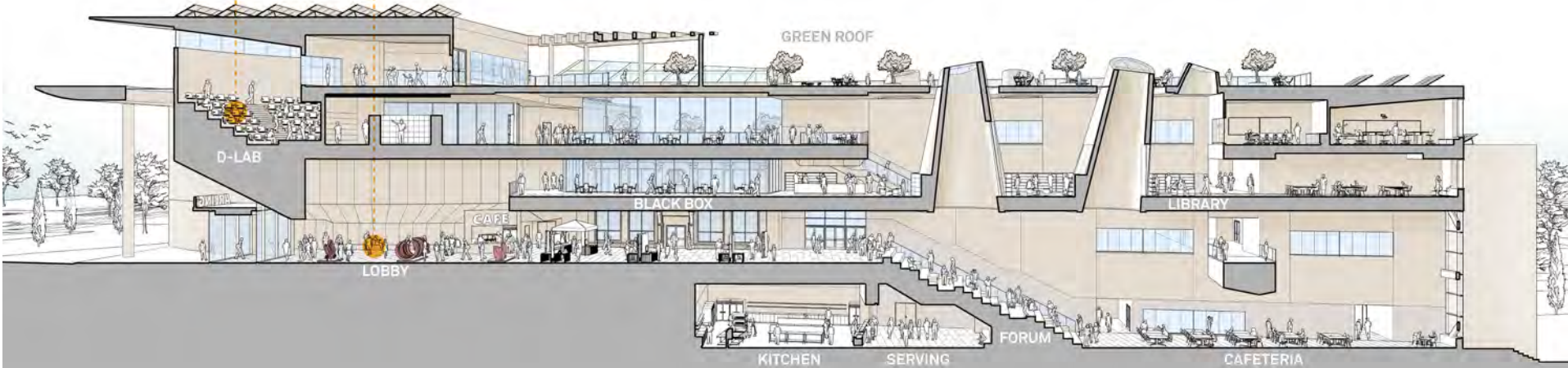
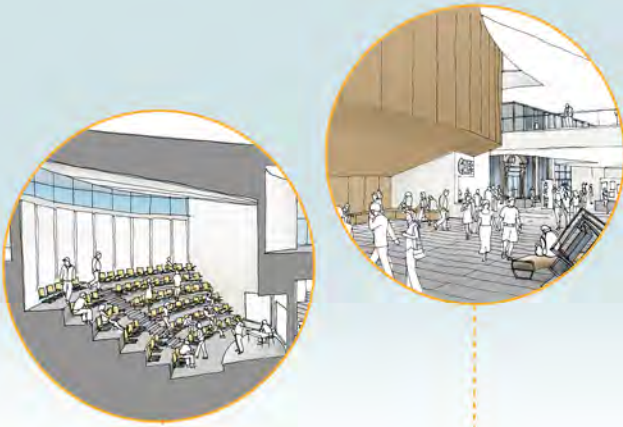


# Central spine concept – Debate & discourse-lab



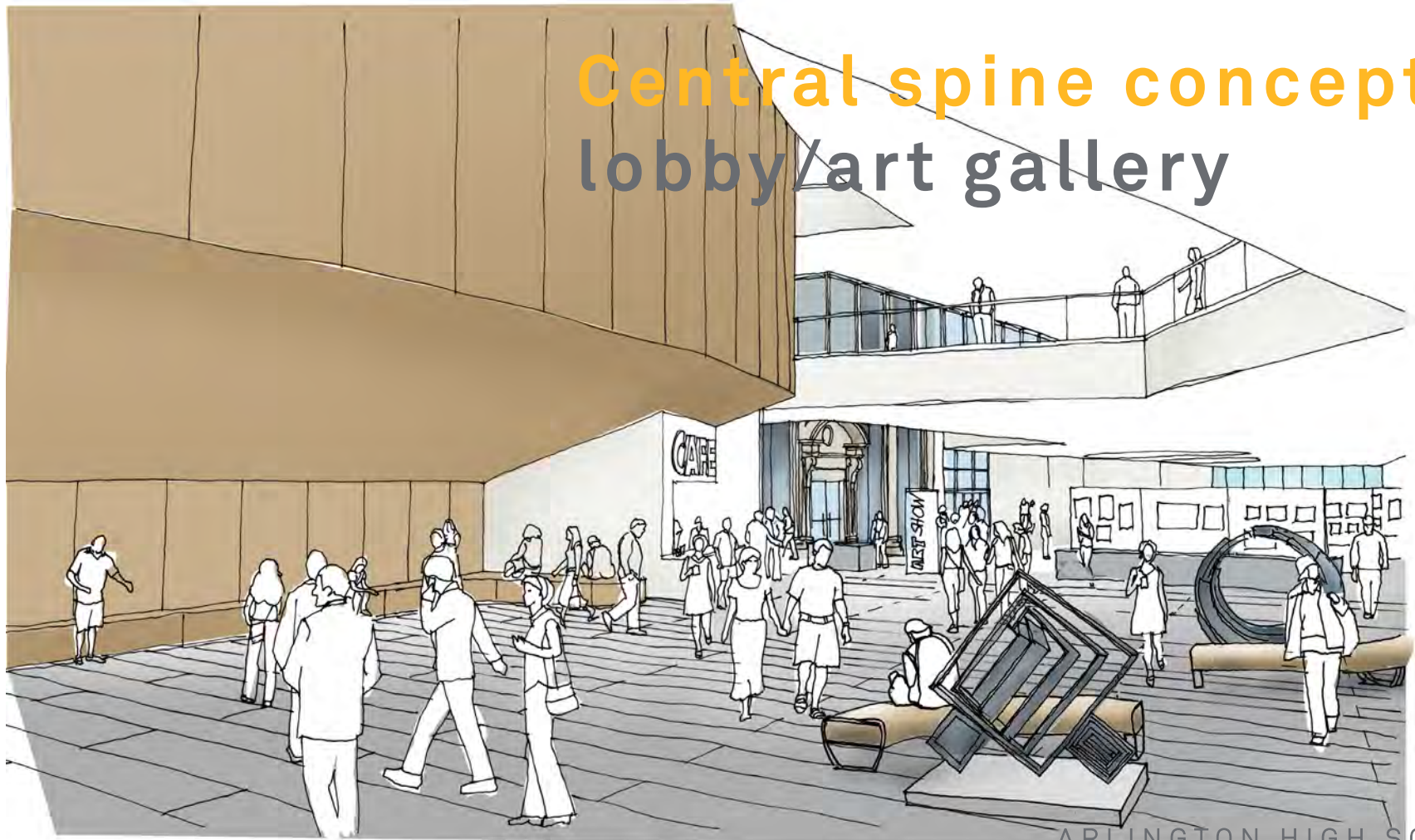
ARLINGTON HIGH SCHOOL  
DRAFT CONCEPT 11/28/18

# Central spine concepts



ARLINGTON HIGH SCHOOL  
DRAFT CONCEPT 11/28/18

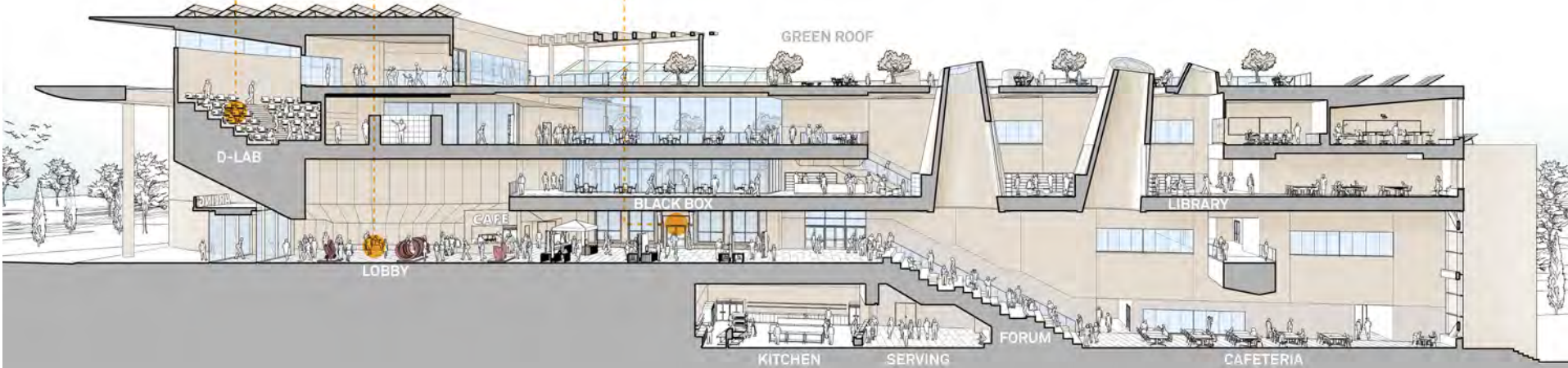
# Central spine concept – lobby/art gallery



ARLINGTON HIGH SCHOOL  
DRAFT CONCEPT 11/28/18



# Central spine concepts



ARLINGTON HIGH SCHOOL  
DRAFT CONCEPT 11/28/18

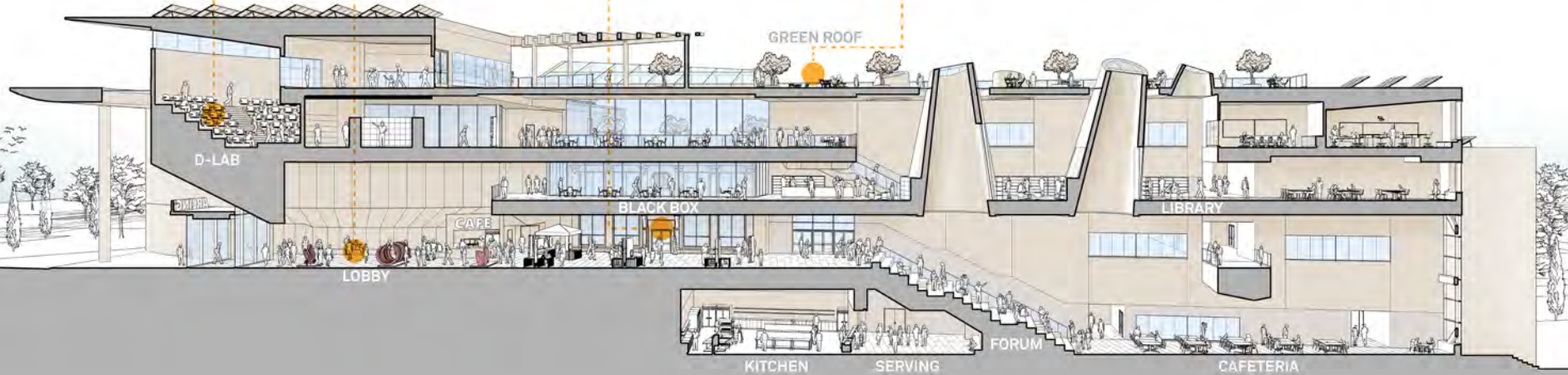
# Central spine concept – Fusco façade @drama classroom



ARLINGTON HIGH SCHOOL  
DRAFT CONCEPT 11/28/18



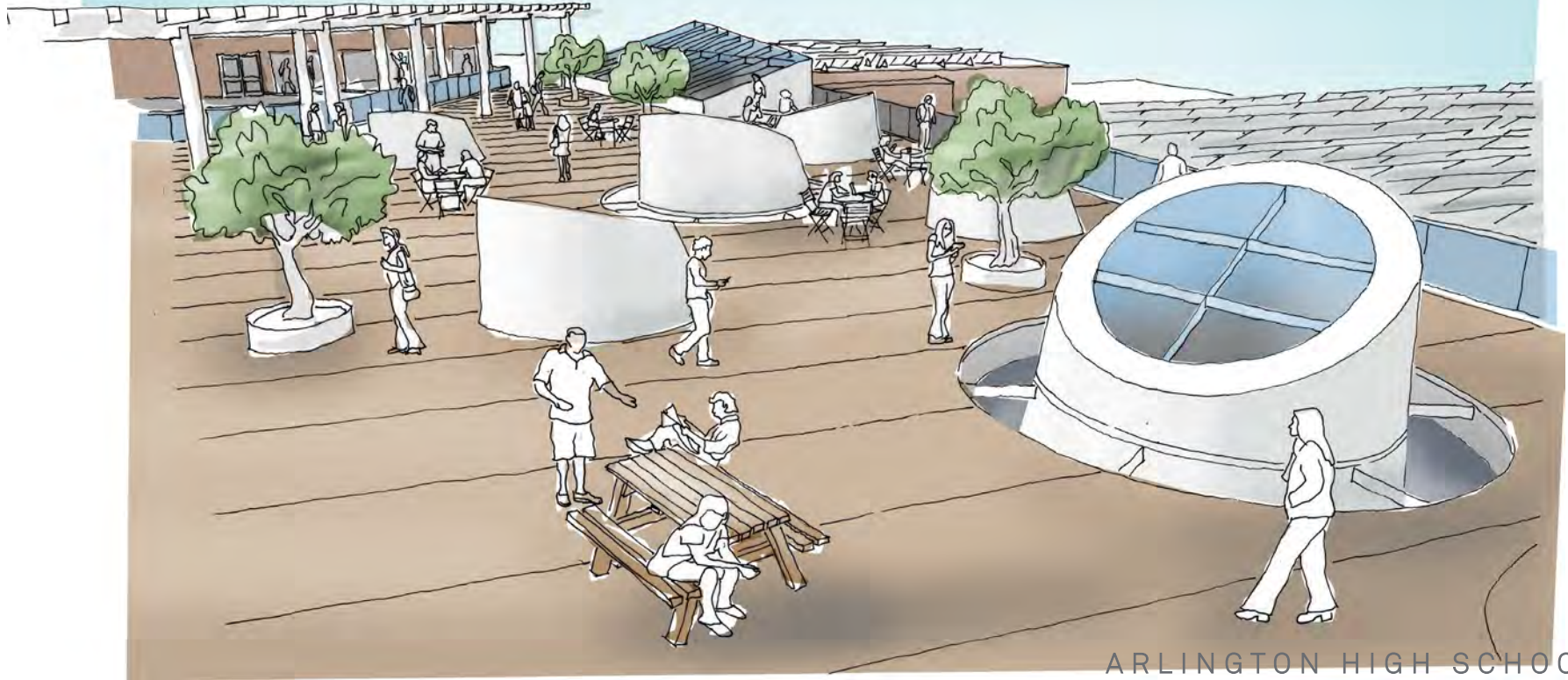
# Central spine concepts



ARLINGTON HIGH SCHOOL  
DRAFT CONCEPT 11/28/18

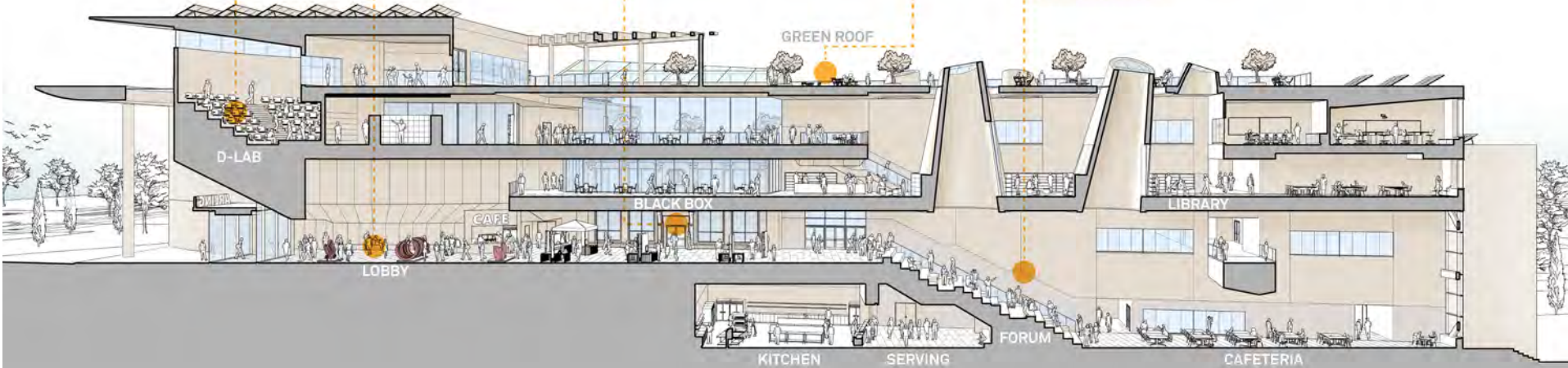


# Central spine concept – green roof



ARLINGTON HIGH SCHOOL  
DRAFT CONCEPT 11/28/18

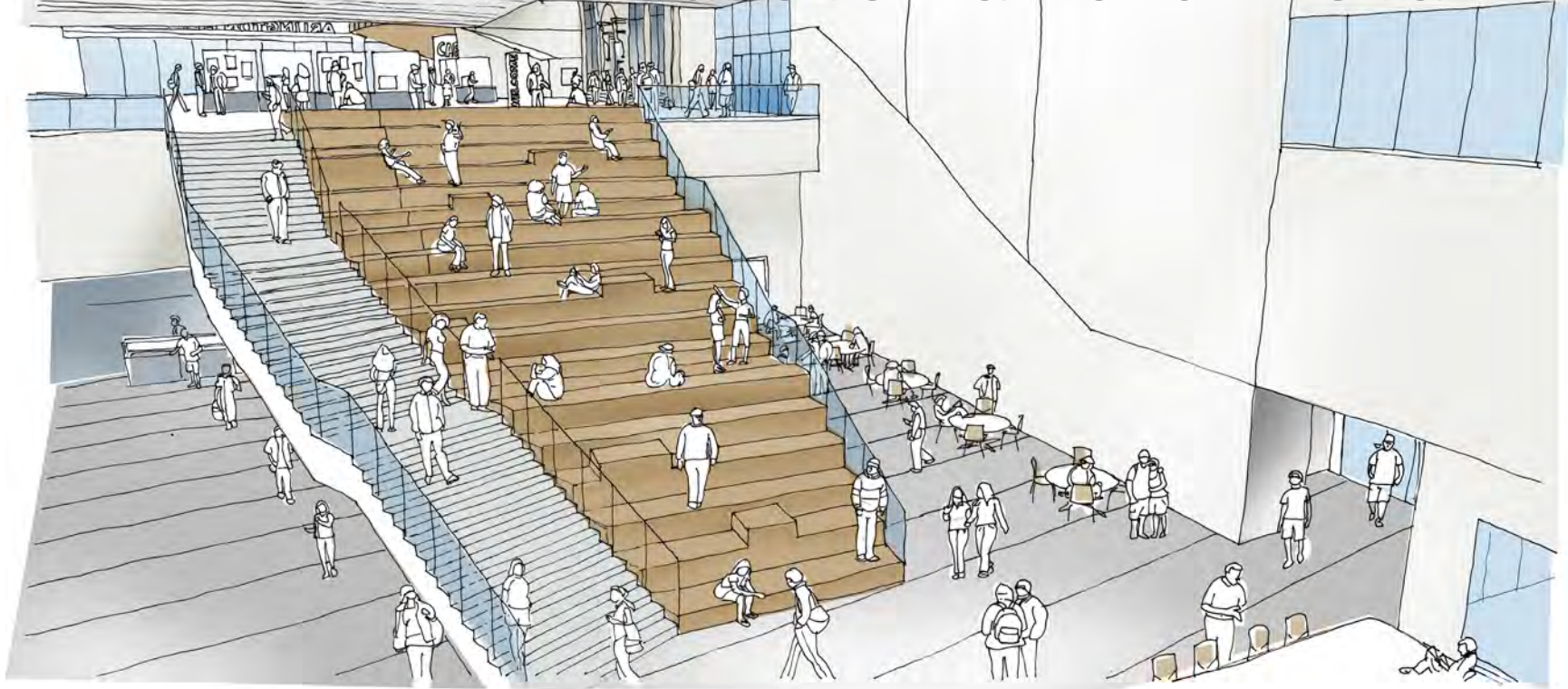
# Central spine concepts



ARLINGTON HIGH SCHOOL  
DRAFT CONCEPT 11/28/18



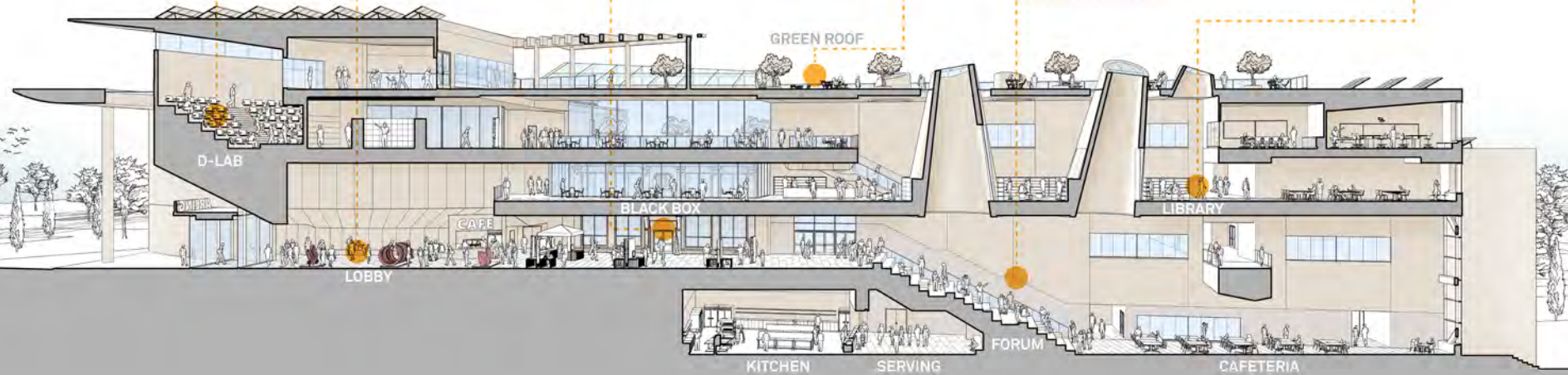
# Central spine concept – cafeteria forum stair



ARLINGTON HIGH SCHOOL  
DRAFT CONCEPT 11/28/18

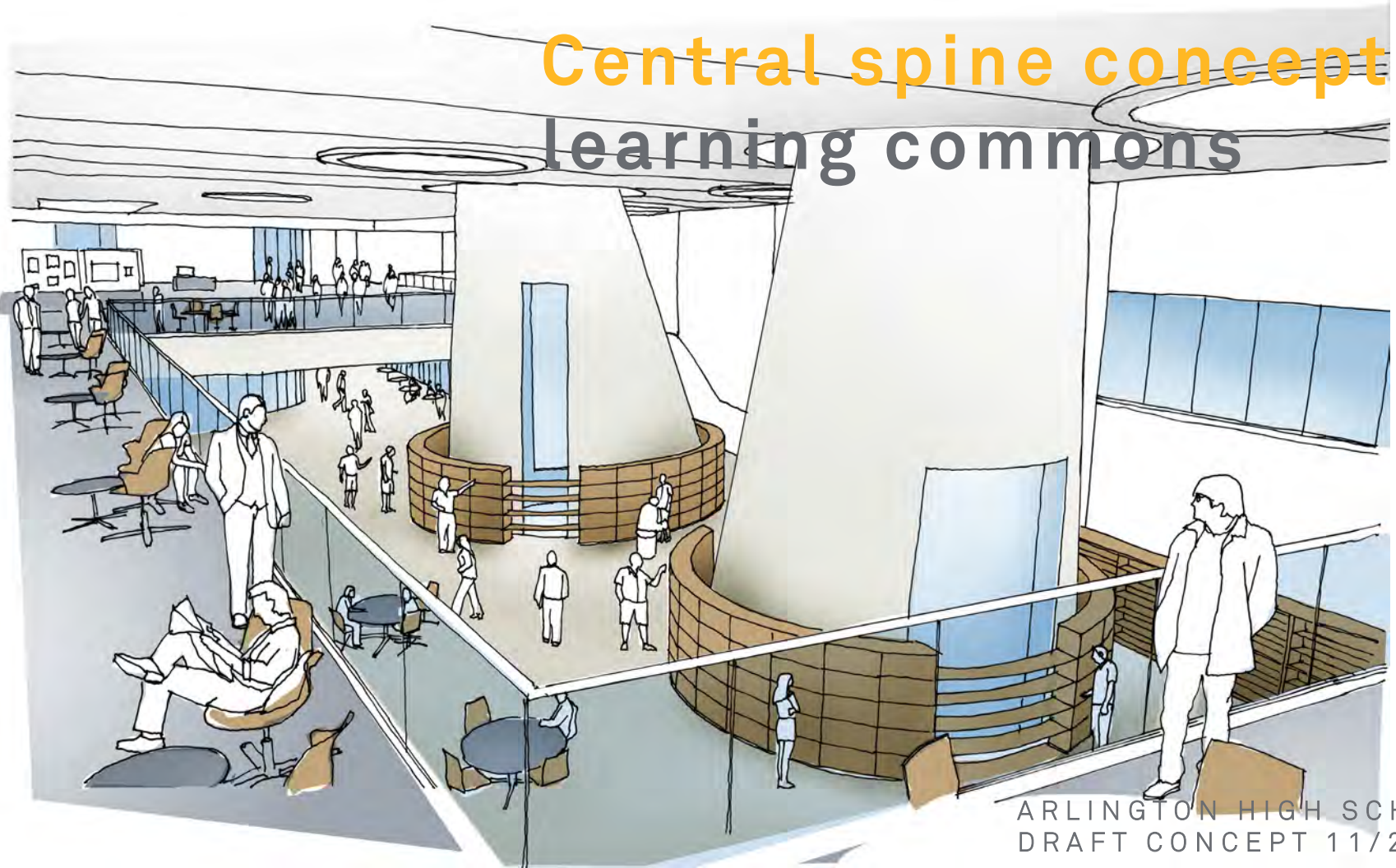


# Central spine concepts



ARLINGTON HIGH SCHOOL  
DRAFT CONCEPT 11/28/18

# Central spine concept - learning commons

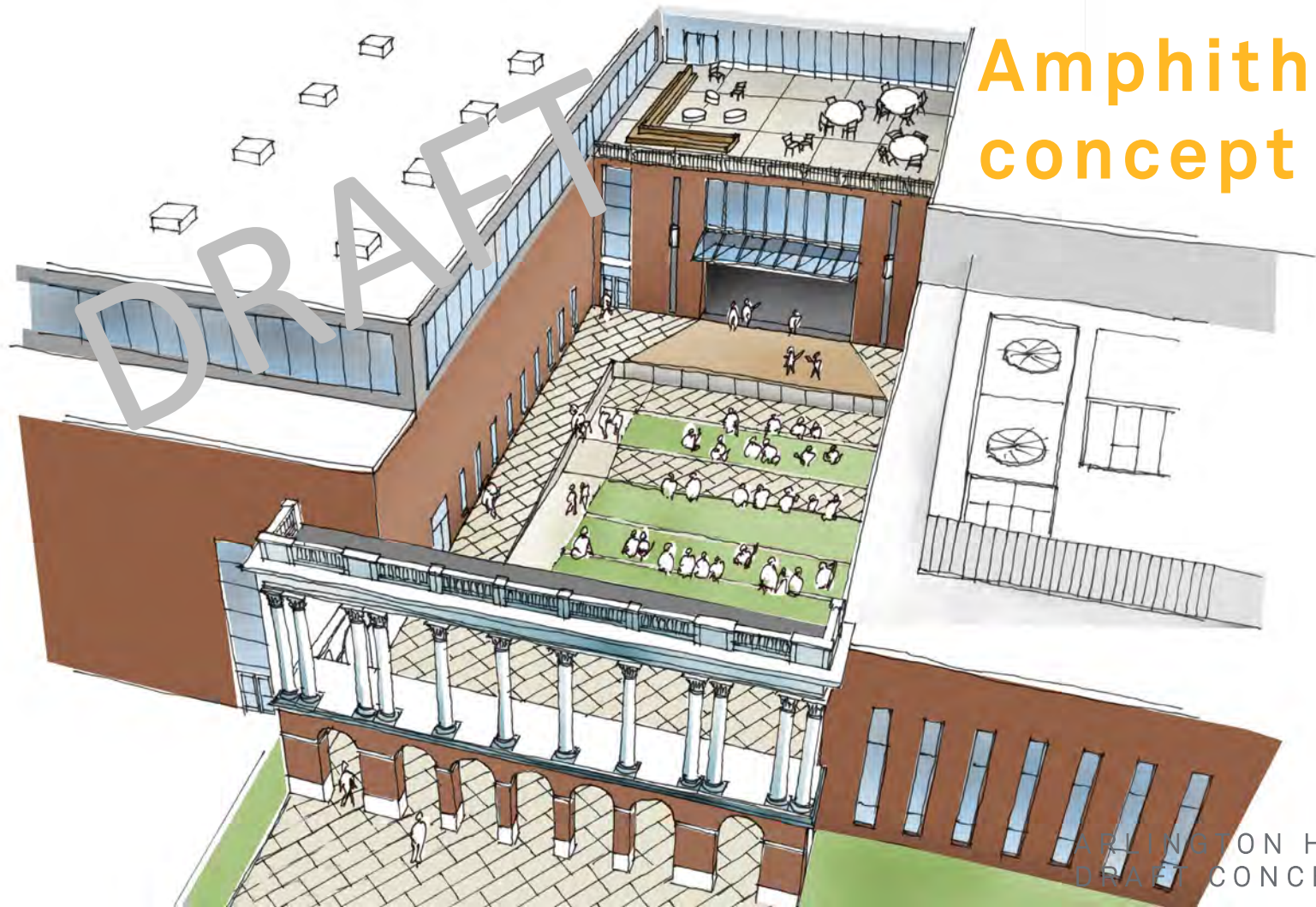


ARLINGTON HIGH SCHOOL  
DRAFT CONCEPT 11/28/18

# Options for Reuse of Historic Elements



# Amphitheater concept



ARLINGTON HIGH SCHOOL  
DRAFT CONCEPT 11/28/18

# Auditorium concept

DRAFT



ARLINGTON HIGH SCHOOL  
DRAFT CONCEPT 11/28/18



# Courtyard concept



ARLINGTON HIGH SCHOOL  
DRAFT CONCEPT 11/28/18



# Central spine concept



ARLINGTON HIGH SCHOOL  
DRAFT CONCEPT 11/28/18

# Mass Avenue Exterior Design Concepts

# All exterior design concepts have the same:

- Interior layout optimizes educational vision
- Central spine
- Entrances at same locations
- Site plan
- Construction timeline and cost
- Auditorium on left/classroom wing on right



A



ARLINGTON HIGH SCHOOL  
DRAFT CONCEPT 11/28/18



A

ARLINGTON HIGH SCHOOL  
DRAFT CONCEPT 11/28/18





A

ARLINGTON HIGH SCHOOL  
DRAFT CONCEPT 11/28/18





A

ARLINGTON HIGH SCHOOL  
DRAFT CONCEPT 11/28/18





B



ARLINGTON HIGH SCHOOL  
DRAFT CONCEPT 11/28/18



B

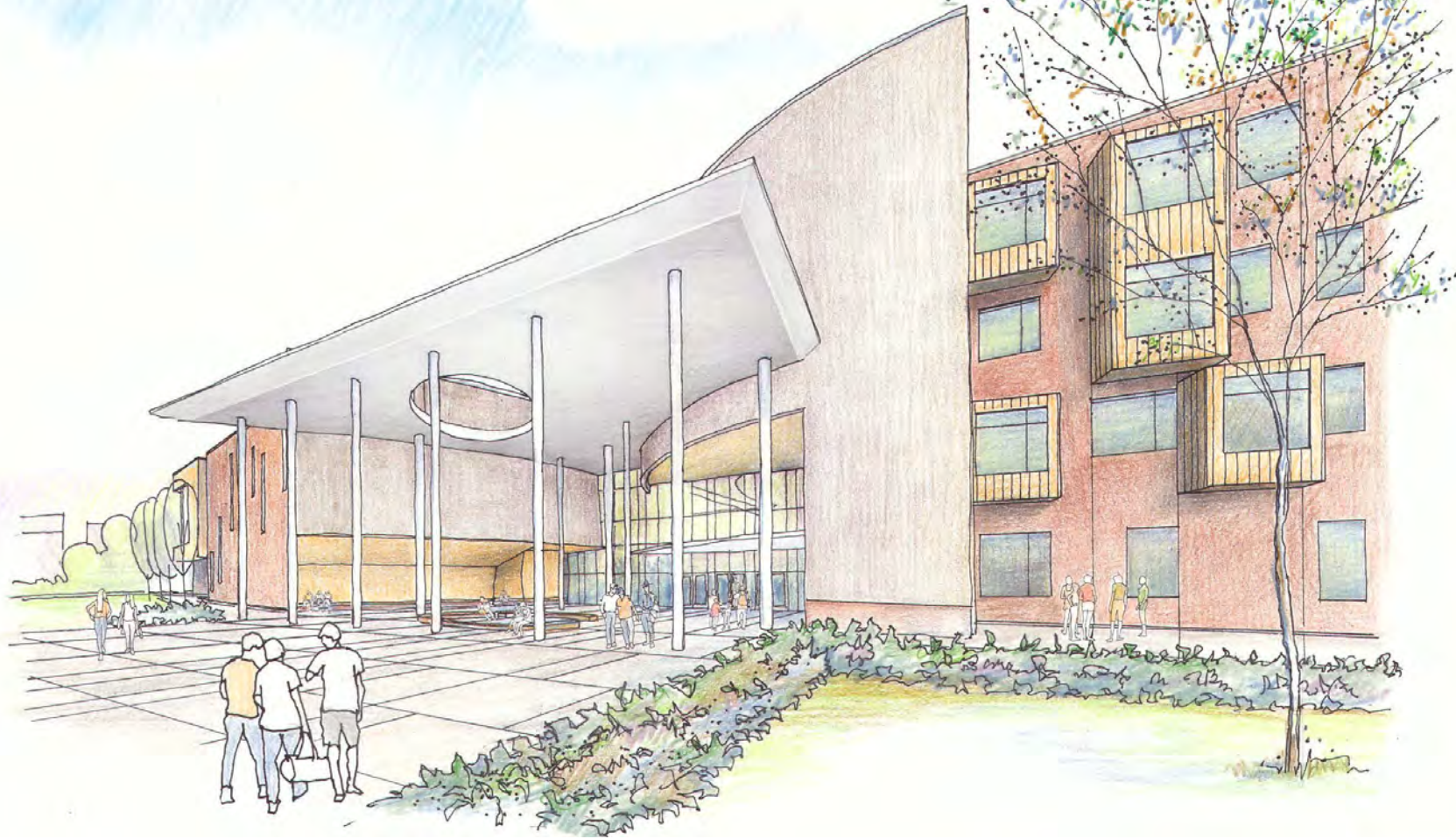
ARLINGTON HIGH SCHOOL  
DRAFT CONCEPT 11/28/18





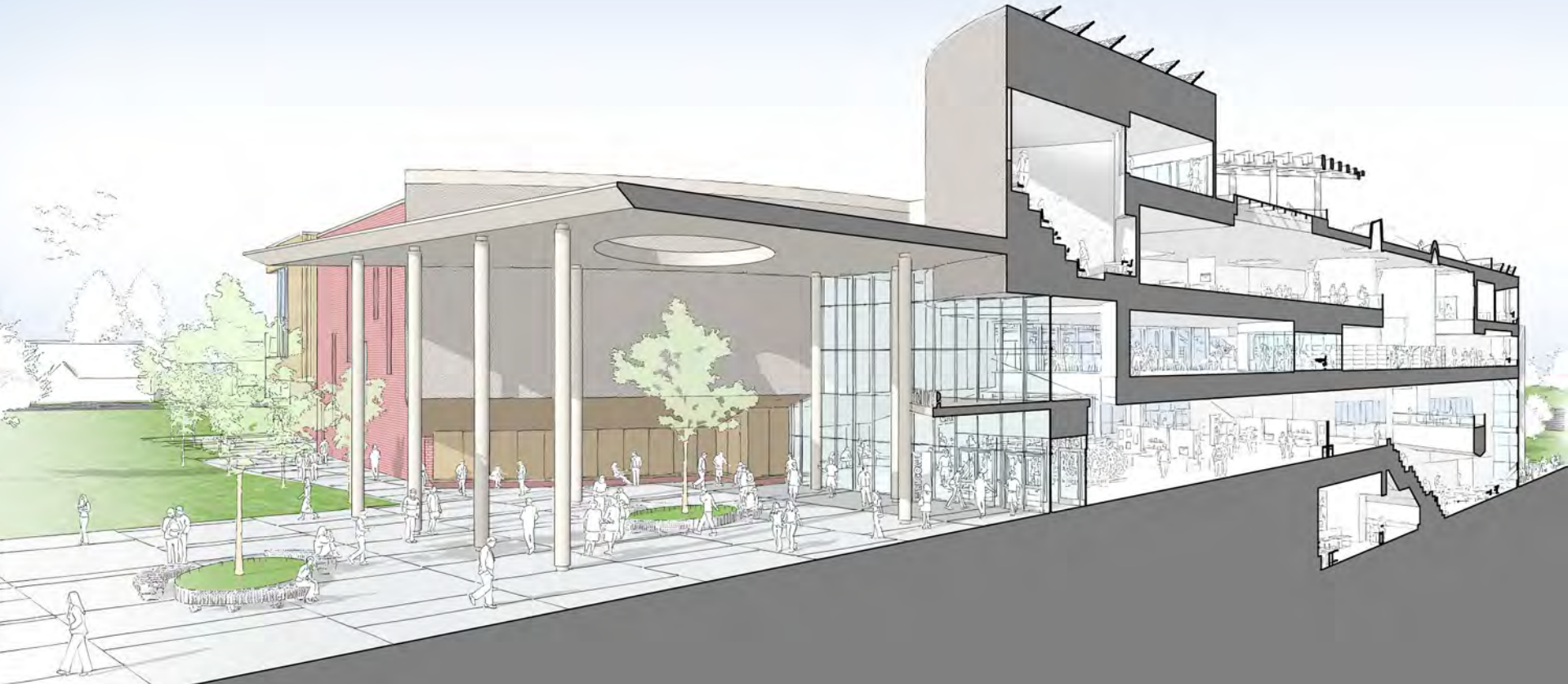
B

ARLINGTON HIGH SCHOOL  
DRAFT CONCEPT 11/28/18



B

ARLINGTON HIGH SCHOOL  
DRAFT CONCEPT 11/28/18





C



ARLINGTON HIGH SCHOOL  
DRAFT CONCEPT 11/28/18



C

ARLINGTON HIGH SCHOOL  
DRAFT CONCEPT 11/28/18





C

ARLINGTON HIGH SCHOOL  
DRAFT CONCEPT 11/28/18



C

ARLINGTON HIGH SCHOOL  
DRAFT CONCEPT 11/28/18

