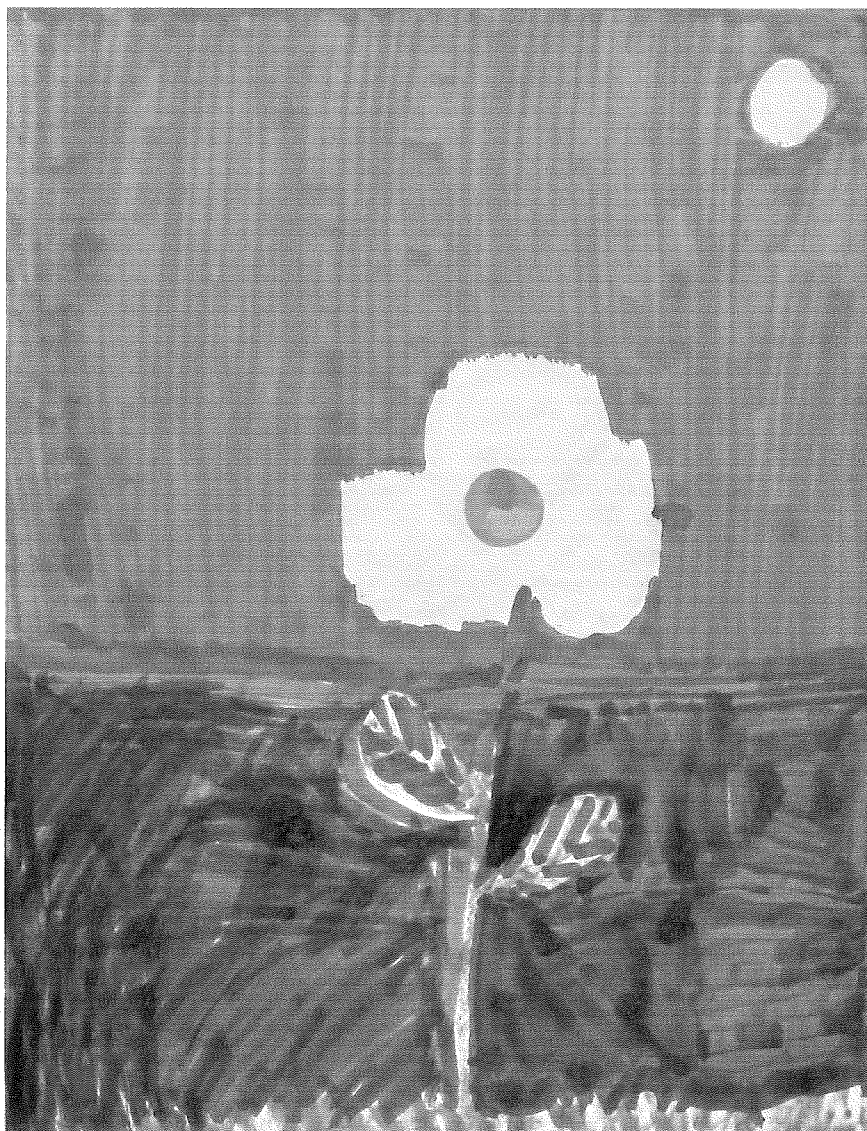


A

It started with a red dot...

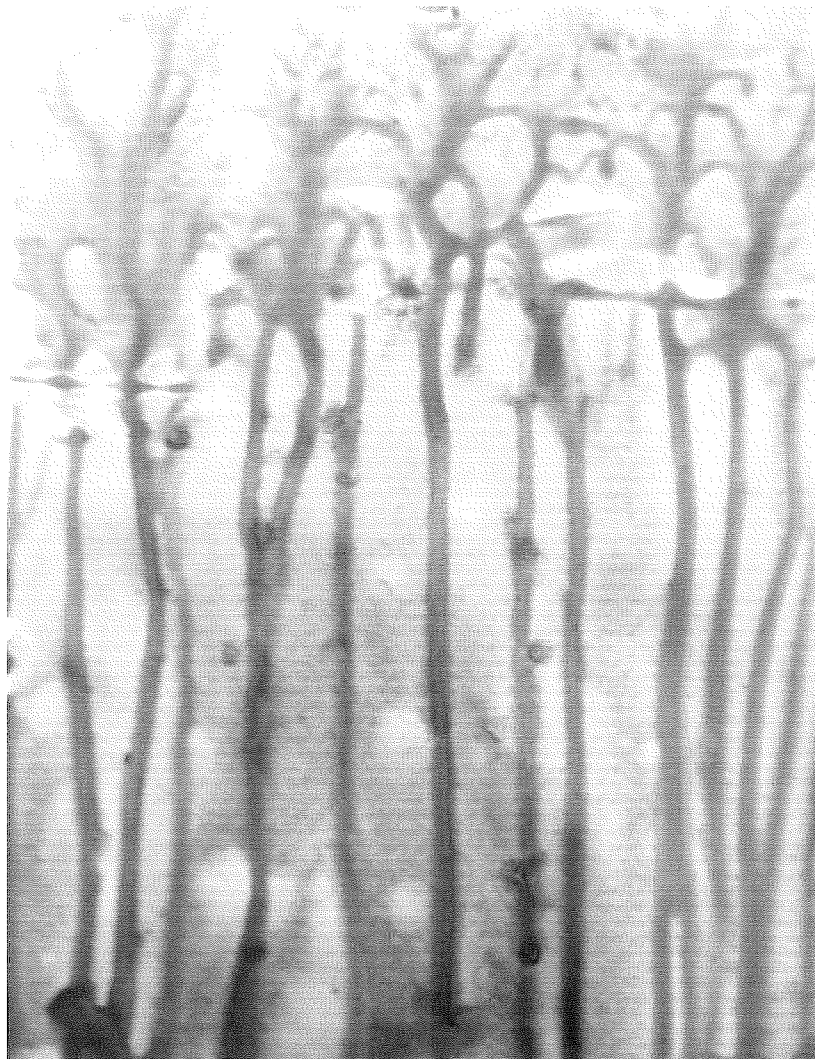
Dallin artists were given a challenge - to make an image starting with just a red dot on their paper. Students were encouraged to make the dot into something more, something that might tell a story. Since we've been working this year on writing more about art, the young artists were invited to write a few sentences about their red dot pictures. Eventually students began to extend this challenge to starting with dots of other colors, such as black and green. The results are varied and imaginative!



B

## Dallin Paintings

These paintings represent both independent study in the Dallin painting studio, and works made by collaborative groups of students. In this display, you might see innovative painting styles that aren't typical of elementary art programs, such as spray bottle painting, and marble painting. One of the many benefits of having a choice-based program is that students can explore and invent their own styles of artmaking. The results are innovative and original!



C

Inspired by Japan

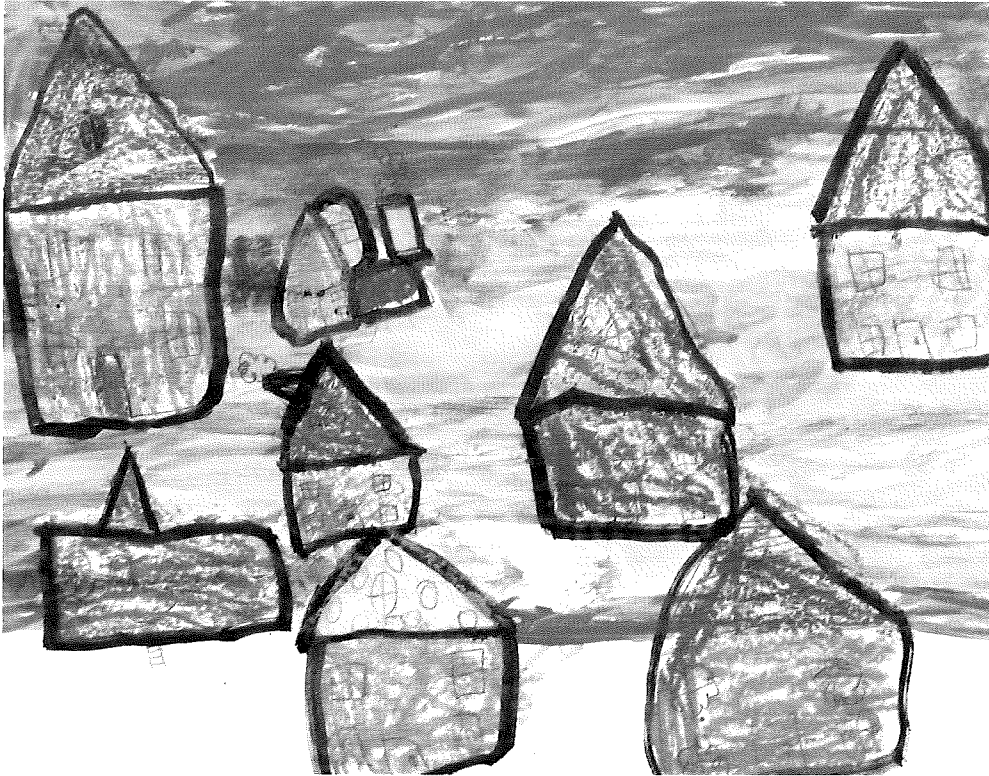
This display features two art techniques that were inspired by the traditional Japanese art forms of sumi-e brush painting, and gyotaku fish printmaking. Dallin brush painters were inspired by the contemporary artist Rebeca Roca, whose videos we watched on YouTube. Students enjoyed working with the specialized materials of traditional bamboo goat hair brushes, and rubber fish-shaped printing plates.



D

## Colorful Communities

Kindergarten artists at Dallin created pictures of colorful communities. These resist paintings were made with tempera paint and oil pastels. They display the efforts of Kindergarten artists to draw two-dimensional, and three-dimensional houses. One of their goals was to spread the colors around their picture so the viewer's eye would travel all around their artwork! The results are bold and colorful!



E

## Moonscape Paintings

For this project, Kindergarten artists learned how to paint in a monochromatic scale from light to dark. Utilizing a palette of white, yellow, blue, and black paints, students were encouraged to mix the colors to create tints and shades. A moon and a silhouette were recommended, but the rest of the imagery was up to the young artists.

The results are rich and dramatic!

