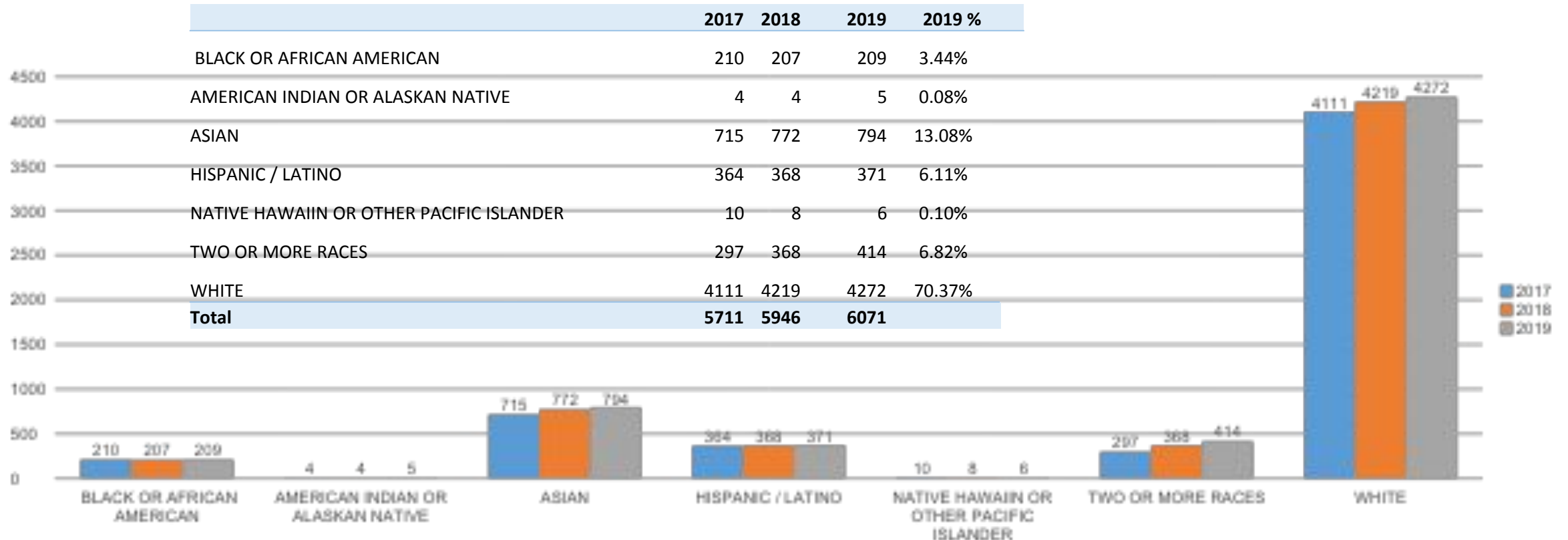




ARLINGTON PUBLIC
SCHOOLS
2019 DIVERSITY REPORT

OCTOBER 10, 2019

STUDENT DATA AS OF OCTOBER 1, 2019

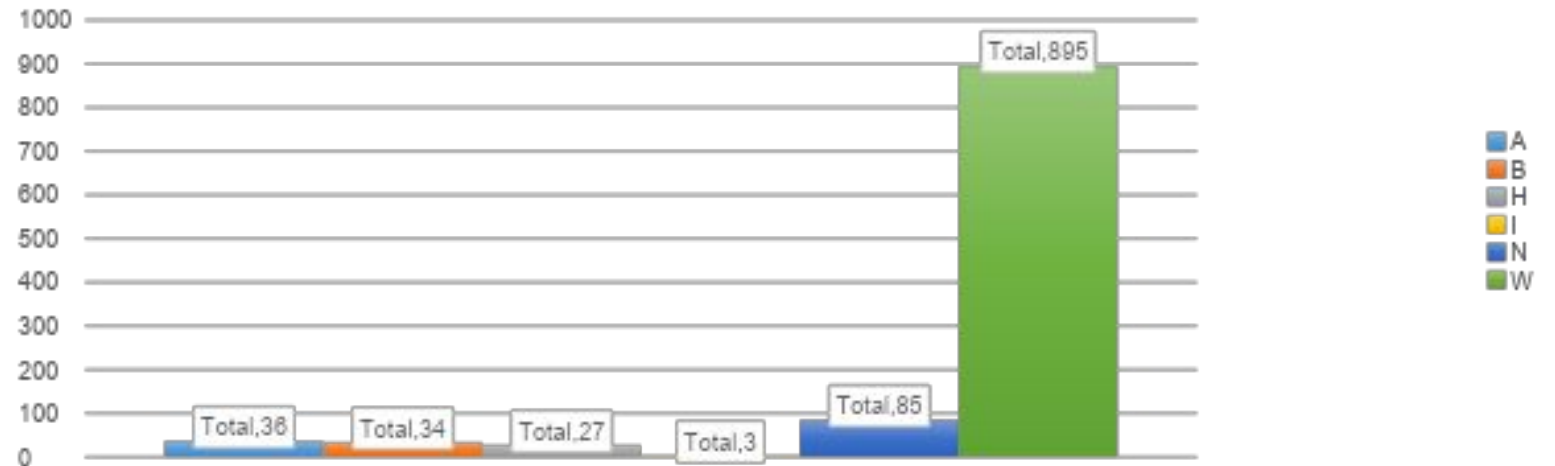


ALL EMPLOYEES

(EXCEPT SUBSTITUTES, COACHES AND COMMUNITY ED.)

All Employees

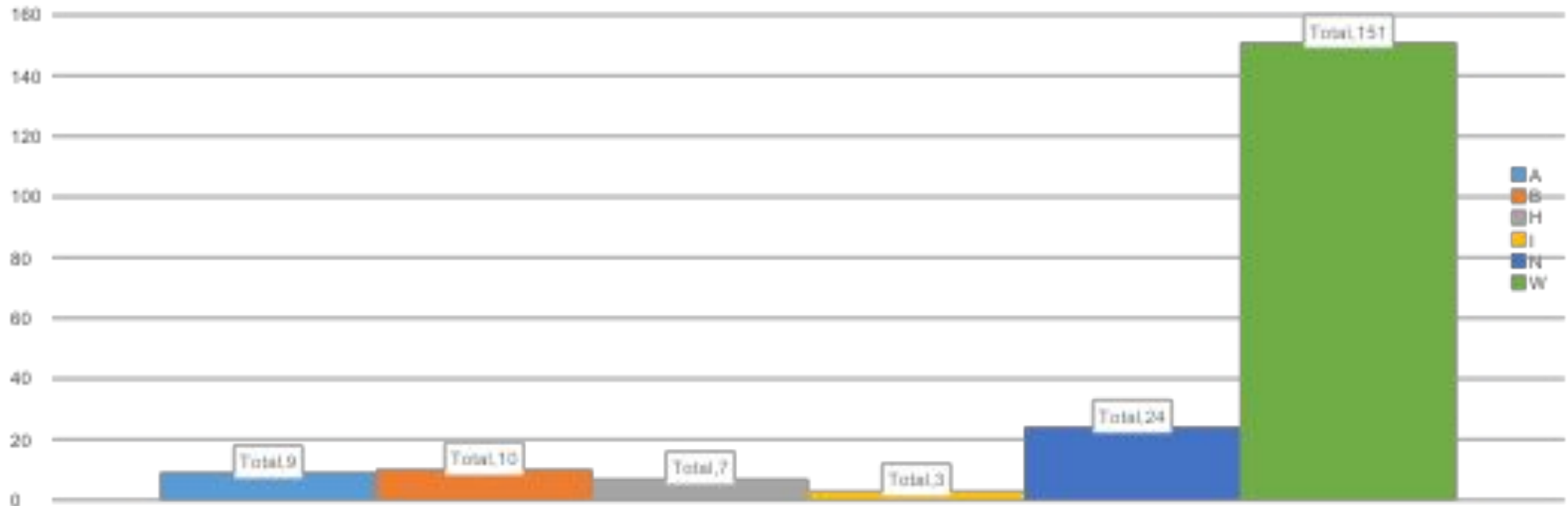
	2017	2018	2019
Asian	3.01%	3.15%	3.33%
Black	2.71%	3.34%	3.15%
Hispanic	2.40%	2.48%	2.50%
Indian or Native America	0.10%	0.19%	0.28%
Not-Identified	2.91%	3.72%	7.87%
White	88.88%	87.12%	82.87%



	A	B	H	I	N	W	Grand Total
	36	34	27	3	85	895	1080
	3.33%	3.15%	2.50%	0.28%	7.87%	82.87%	

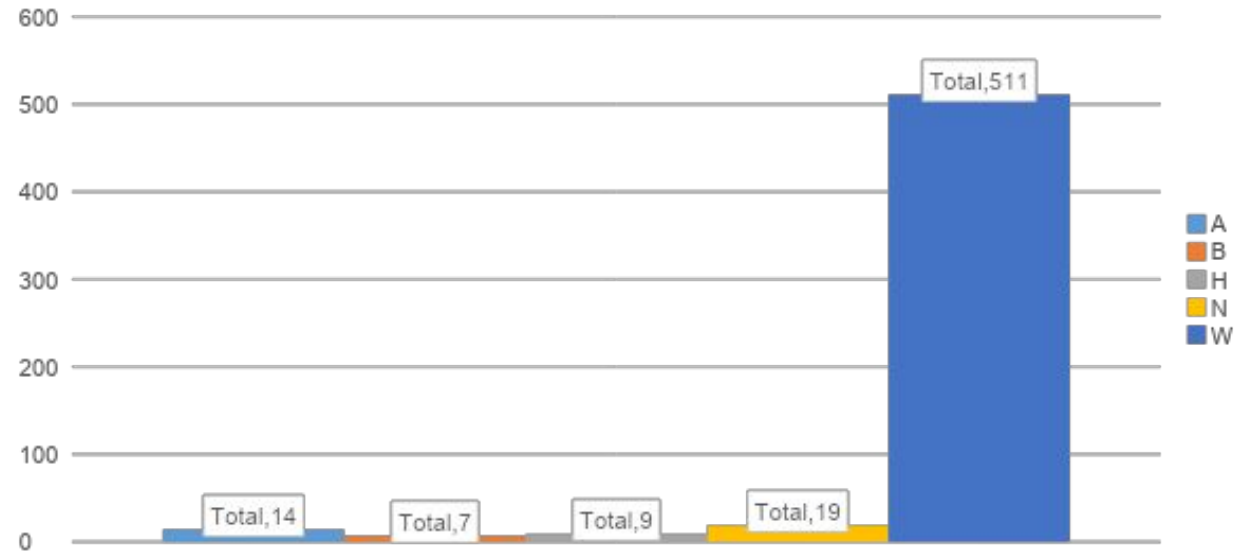
ALL NEW HIRES SINCE 10/1/2018

A	B	H	I	N	W	Grand Total
9	10	7	3	24	151	204
4.41%	4.90%	3.43%	1.47%	11.76%	74.02%	



AEA EMPLOYEES

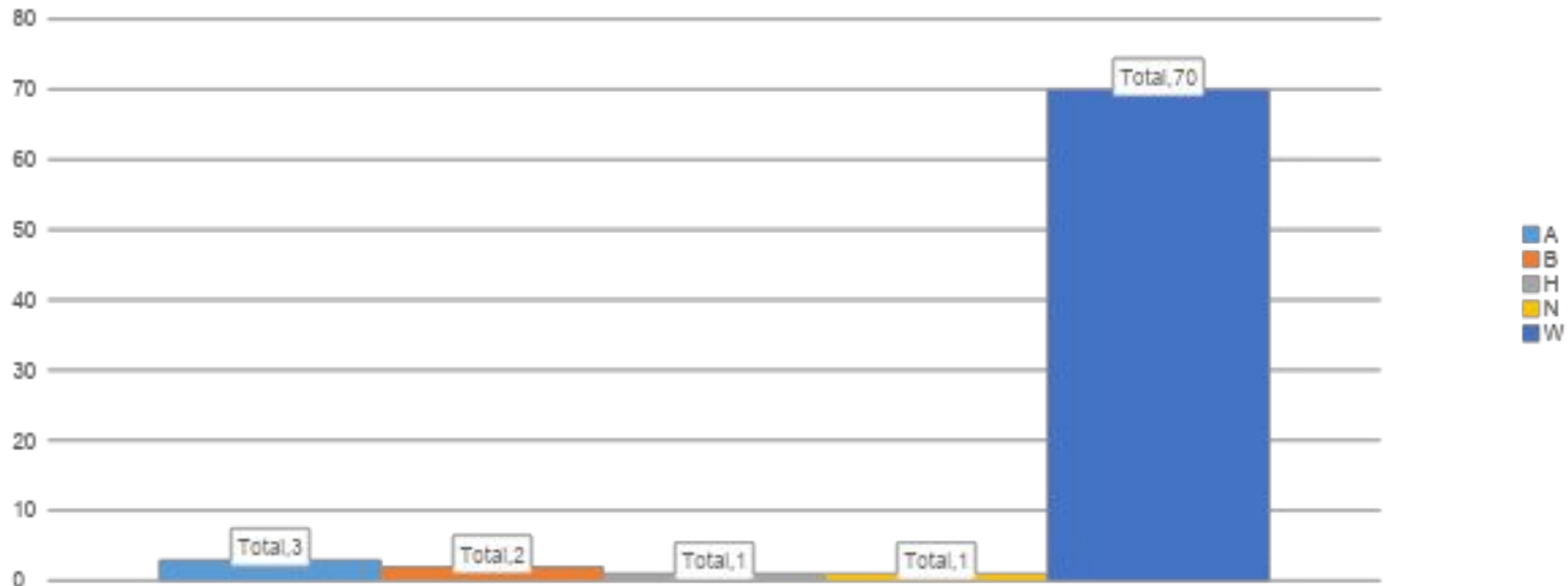
	2017	2018	2019
Asian	2.14%	2.59%	2.50%
Black	1.00%	1.29%	1.25%
Hispanic	1.75%	1.66%	1.61%
Indian or Native America	0.00%	0.00%	0.00%
Not-Identified	2.00%	0.74%	3.39%
White	95.00%	93.72%	91.25%



A	B	H	N	W	Grand Total
14	7	9	19	511	560
2.50%	1.25%	1.61%	3.39%	91.25%	100.00%

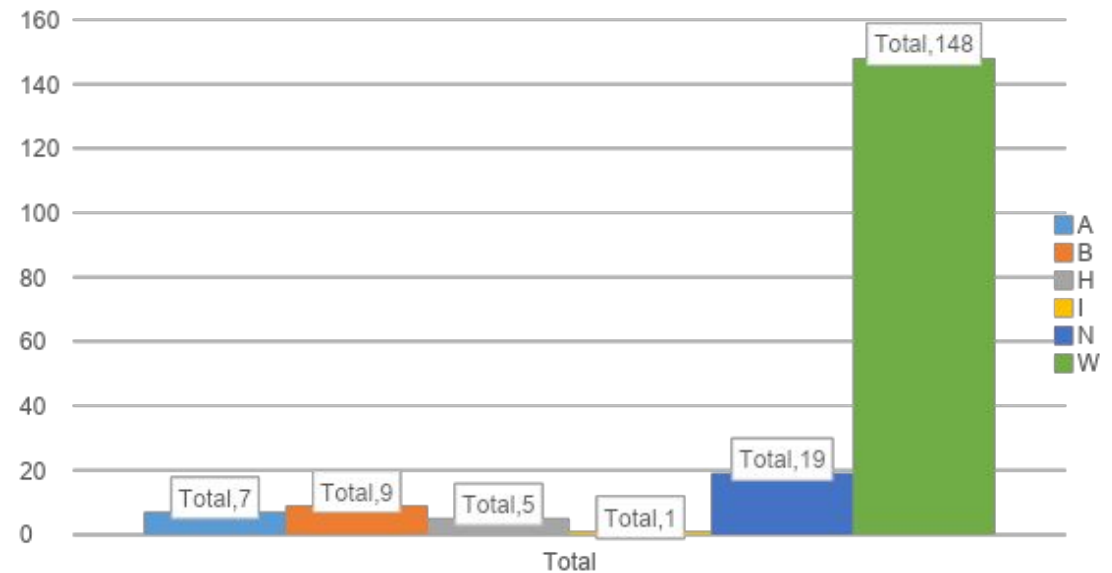
AEA NEW HIRES SINCE 10/1/2018

A	B	H	N	W	Grand Total
3	2	1	1	70	77
3.90%	2.60%	1.30%	1.30%	90.91%	



PARAPROFESSIONALS

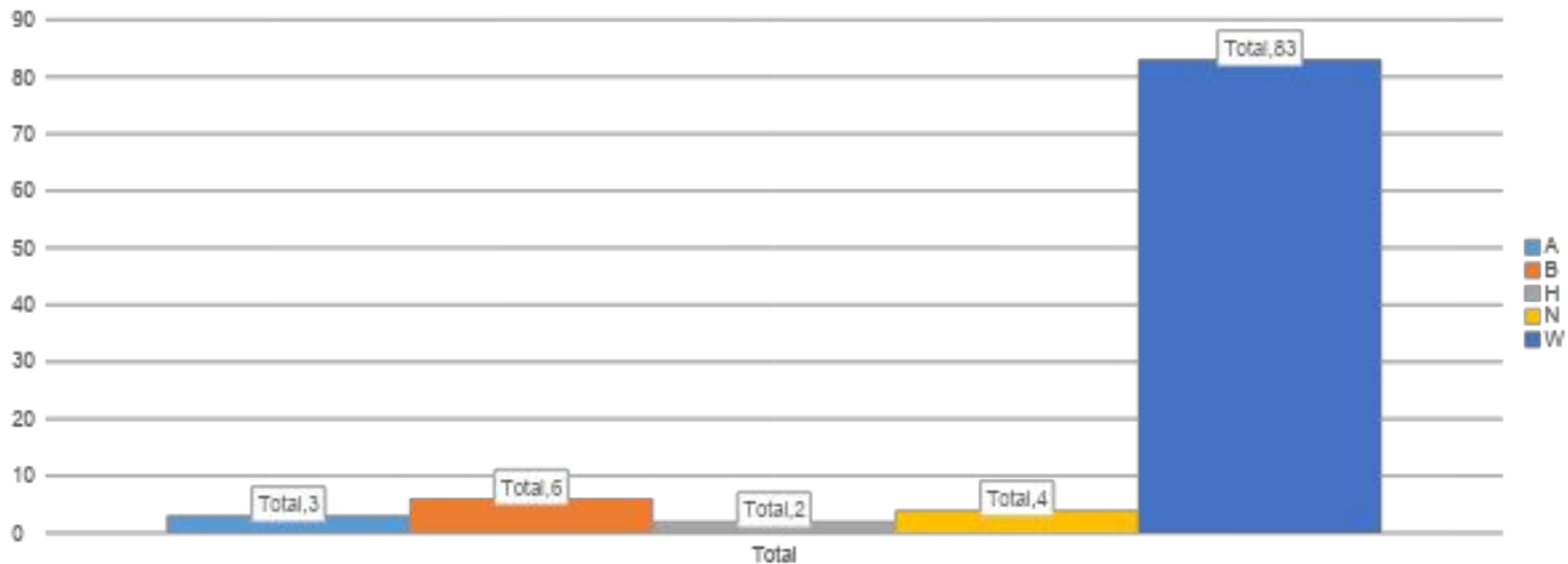
Paraprofessionals	2017	2018	2019
Asian	3.24%	2.56%	3.70%
Black	5.41%	6.67%	4.76%
Hispanic	1.62%	2.05%	2.65%
Indian or Native America	0.54%	0.51%	53.00%
Not-Identified	0.00%	0.51%	10.05%
White	89.19%	87.69%	78.31%



A	B	H	I	N	W	Grand Total
7	9	5	1	19	148	189
3.70%	4.76%	2.65%	0.53%	10.05%	78.31%	

AAA, ADMINISTRATION/PRINCIPALS,CENTRAL OFFICE, IT, ADMIN ASSISTANTS

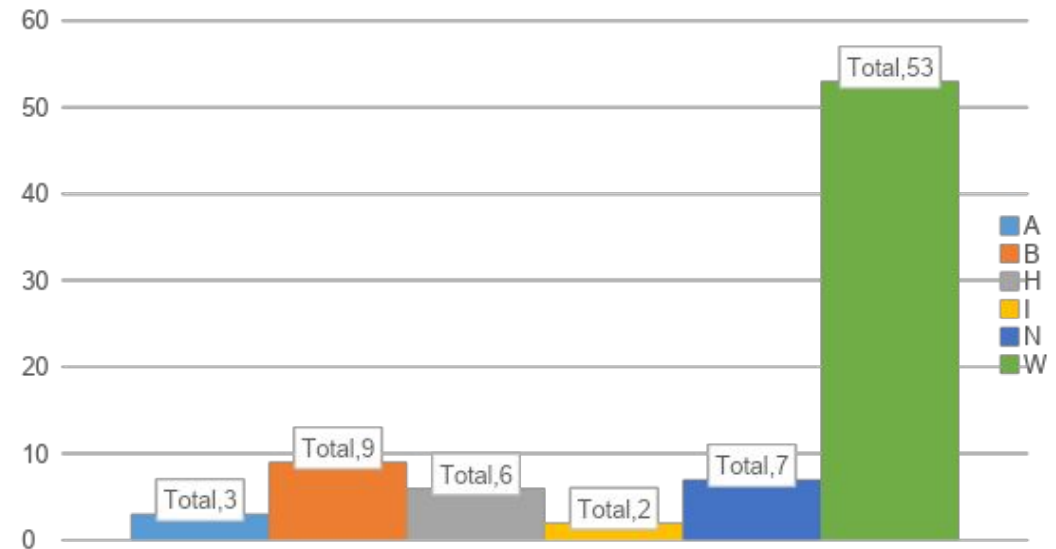
A	B	H	N	W	Grand Total
3	6	2	4	83	98
3.06%	6.12%	2.04%	4.08%	84.69%	100.00%



AASP / DAY CARE

AASP / DAY CARE

	2017	2018	2019
Asian	3.85%	3.08%	3.75%
Black	3.85%	9.23%	11.25%
Hispanic	5.77%	7.69%	7.50%
Indian or Native America	0.00%	1.54%	2.50%
Not-Identified	7.69%	4.62%	8.75%
White	78.85%	73.85%	66.25%

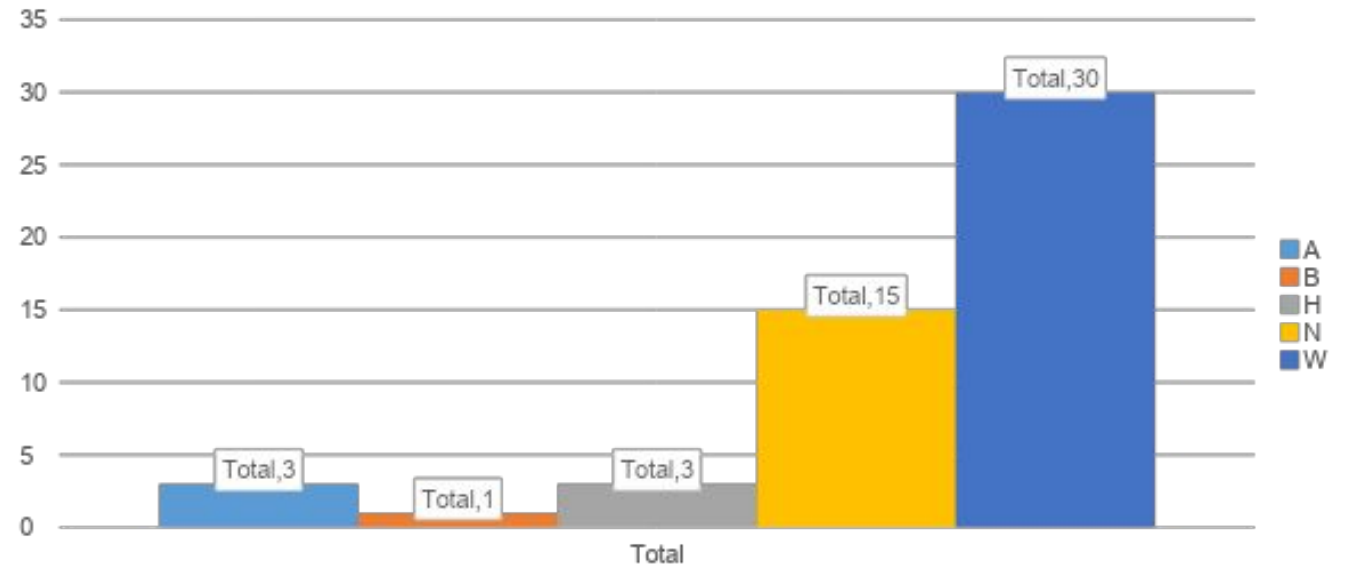


A	B	H	I	N	W	Grand Total
3	9	6	2	7	53	80
3.75%	11.25%	7.50%	2.50%	8.75%	66.25%	

MAINTENANCE/ TRANSPORATION/ FOOD SERVICE

MNT / TRANSP/FOOD

	2017	2018	2019
Asian	6.57%	7.81%	5.77%
Black	3.65%	2.34%	1.92%
Hispanic	5.11%	3.91%	5.77%
Indian or Native America	0.00%	0.00%	0.00%
Not-Identified	16.79%	23.44%	28.85%
White	67.88%	62.50%	57.69%



A	B	H	N	W	Grand Total
3	1	3	15	30	52
5.77%	1.92%	5.77%	28.85%	57.69%	

2019 ARLINGTON STUDENTS AND STAFF ETHNICITY BREAKDOWN

