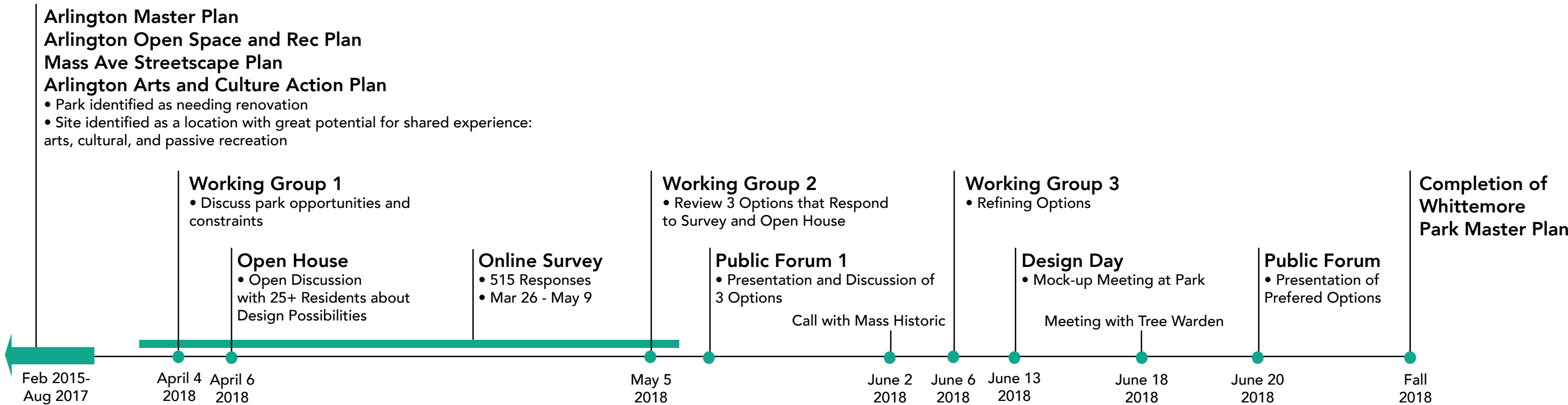


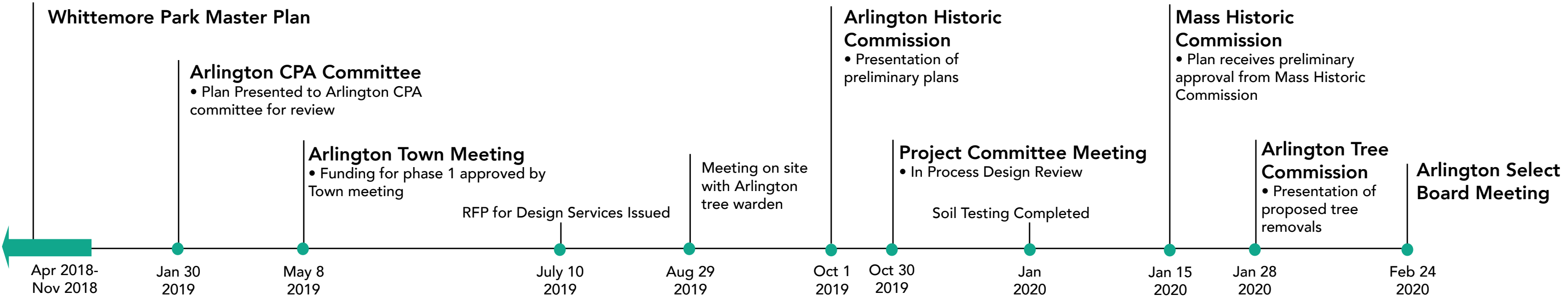
# Whittemore Park



# SUMMARY OF PUBLIC PROCESS



# SUMMARY OF PHASE 1 PROCESS



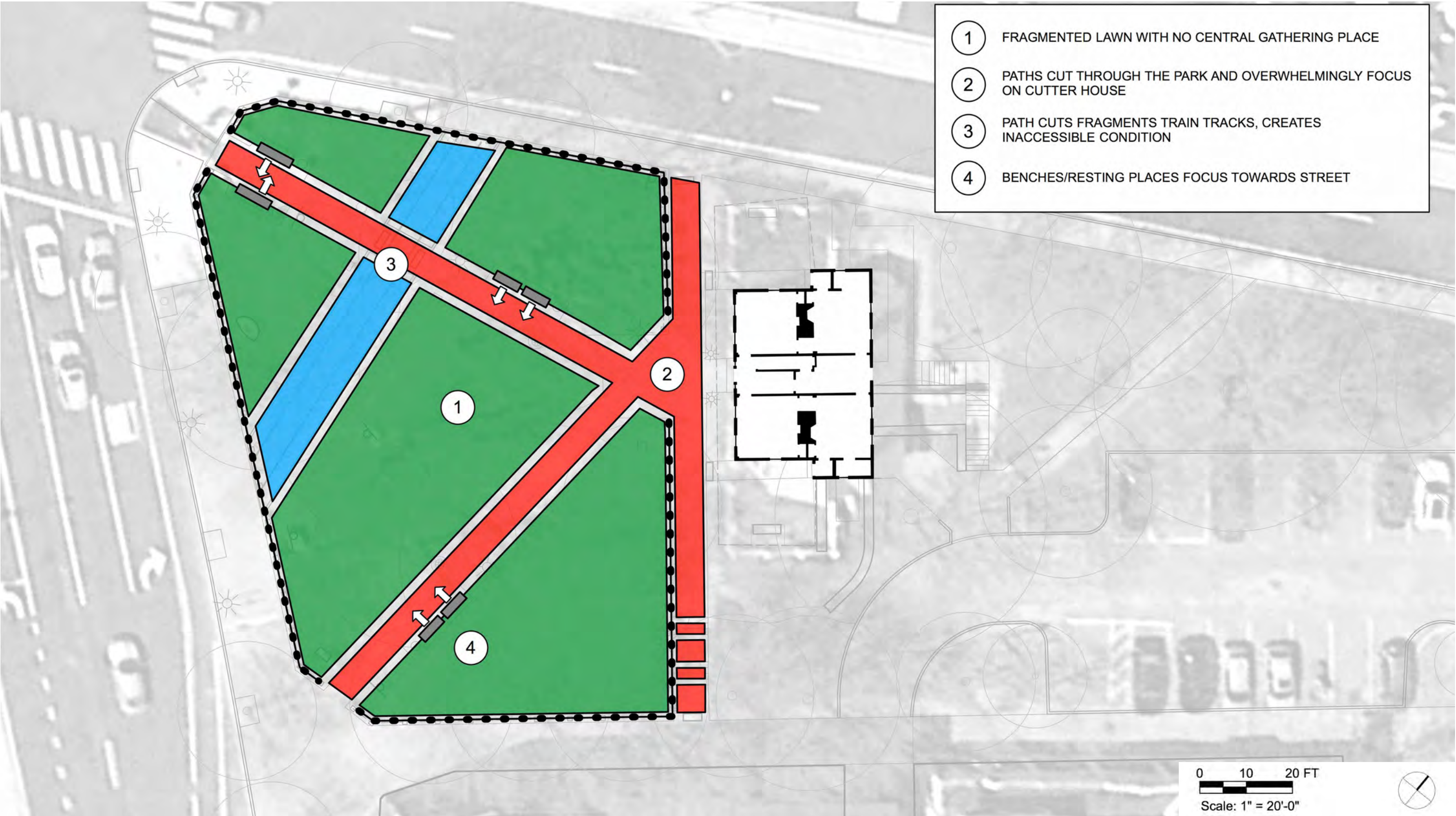
# PROJECT GOALS

- Improve circulation in the park
- Increase visibility and prominence of the park
- Cultivate opportunities for passive recreation, programs, and events
- Enhance historic, cultural, and natural landscape in Arlington Center
- Create a park that is democratic in that it could be used by many types of people
- Create a park that is flexible in that it could be used use for many kinds of activities
- Create a park that is beloved, inspires stewardship, and is culturally appropriate for town

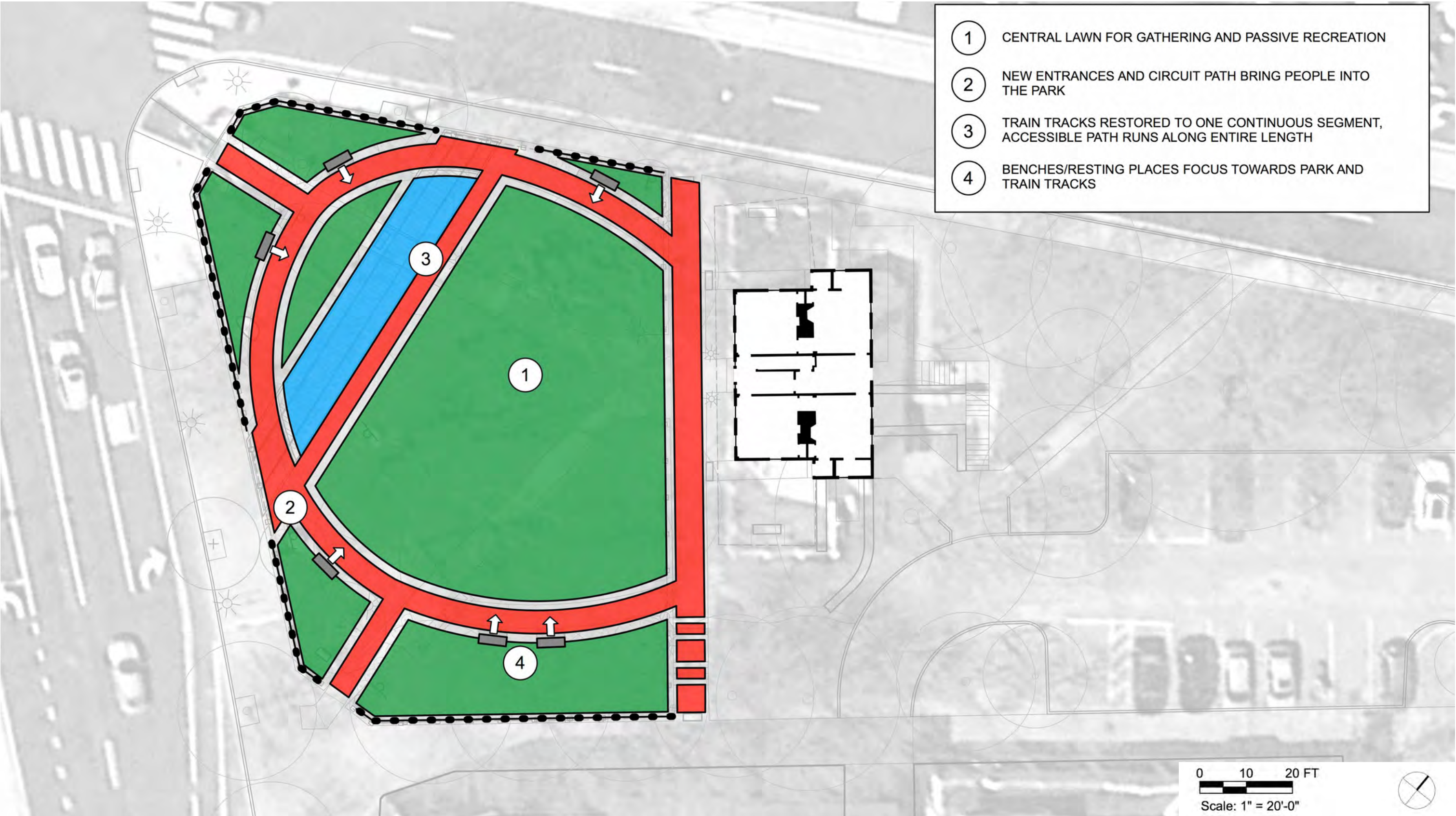
# EXISTING CONDITIONS



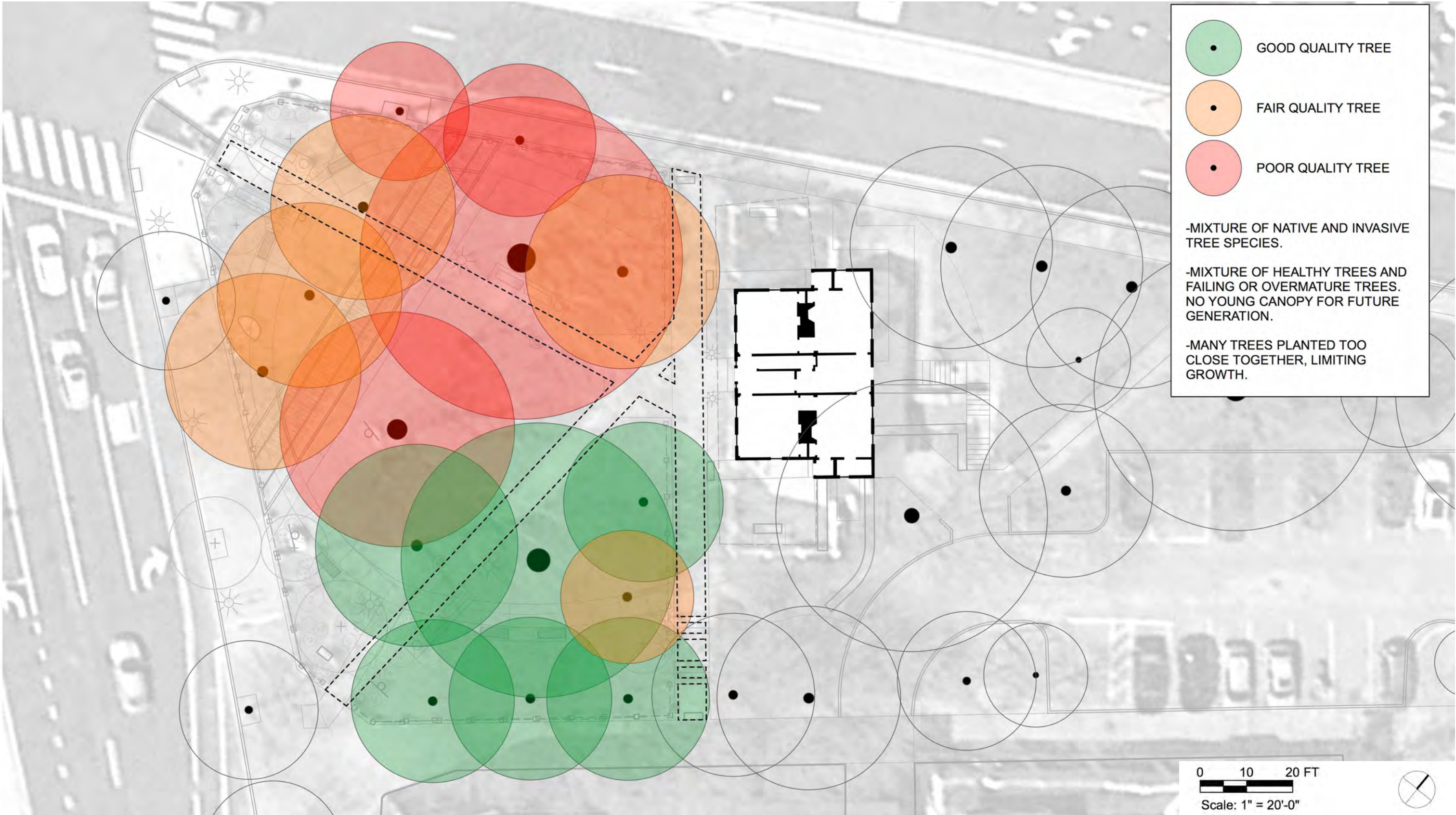
# DIAGRAM-EXISTING



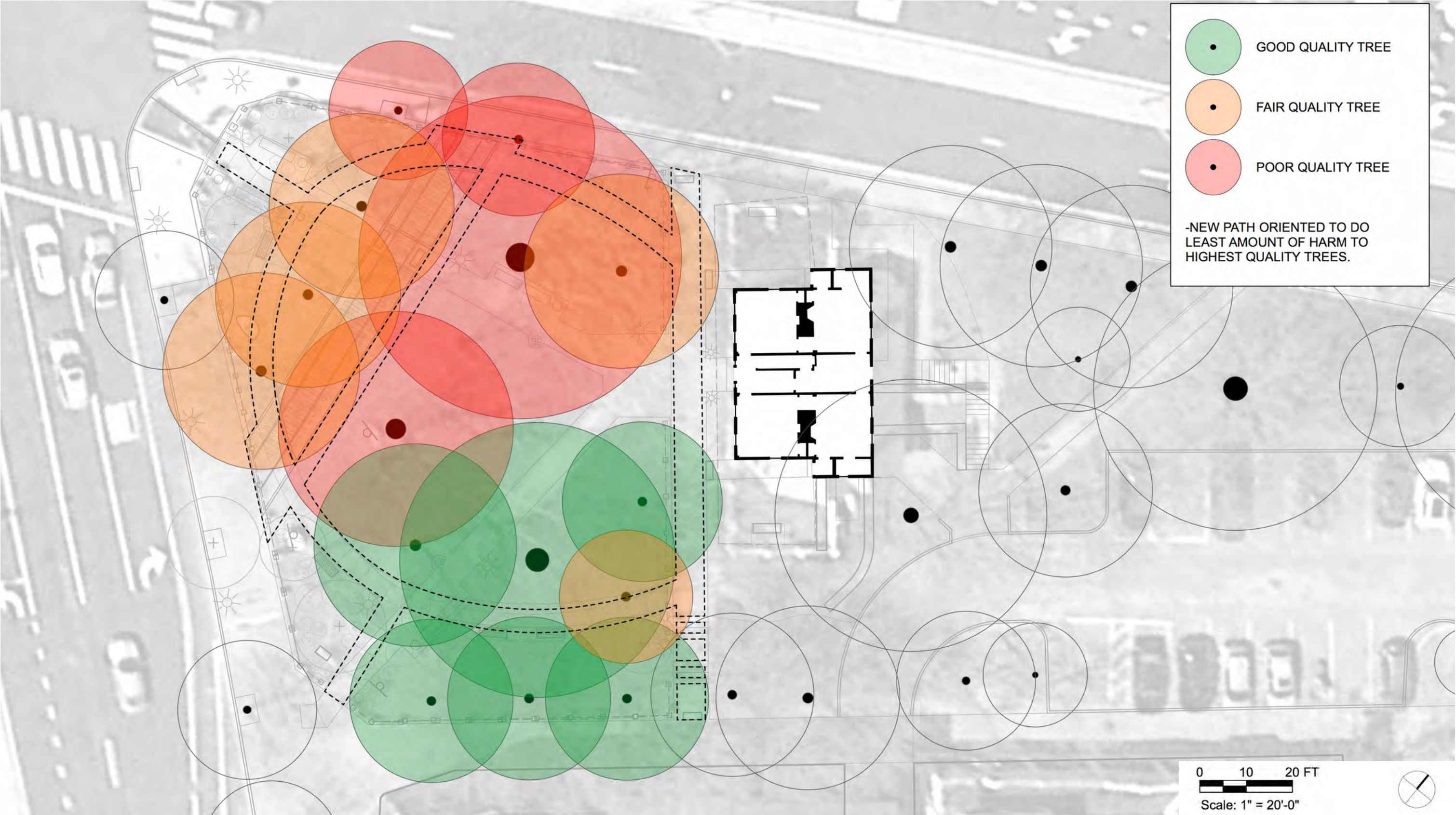
# DIAGRAM-PROPOSED



# DIAGRAM-TREE QUALITY



# DIAGRAM-TREE QUALITY



# TREES PROPOSED FOR REMOVAL



# TREES PROPOSED FOR REMOVAL



**Norway Maple**  
*Acer platanoides*  
15" Caliper

Arborist's assesment determined tree was in poor condition. The tree is growing between the fence line of Whittemore Park and the sidewalk of Mystic St, and is exhibiting multiple dead branches, girdling roots, and an uneven crown, predominantly over sidewalk.



**Yellowwood**  
*Cladastris kentukea*  
15" Caliper

Arborist's assesment determined tree was in fair condition. The tree is exhibiting multiple girdling roots, and is heavily shaded, resulting in a thin, vertical canopy, and a cavity in the crotch is retaining rainwater and debris–may lead to rot over time.



**Norway Maple**  
*Acer platanoides*  
22" Caliper

Arborist's assesment determined tree was in fair condition. The tree's root crown has been buried and girdling roots are suspected. The tree has multiple dead branches, and an uneven crown predominantly over sidewalk.

# PROPOSED NEW TREES



# PROPOSED NATIVE TREE PLANTING

## Canopy Trees

Thornless Honeylocust  
Tuliptree  
Swamp White Oak

## Mid-Size Trees

Yellowwood

## Flowering Ornamentals

Hawthorn  
Redbud

## CARBON SEQUESTRATION:

The three existing trees slated for removal currently remove 1,902 lbs. of carbon annually. At planting, the seven new trees will remove 522 lbs. of atmospheric carbon annually. This rate will continue to increase as the trees grow. **We estimate that within 9 years the new trees will sequester as much carbon as the three slated for removal.**

At 17 years, the average time it will take the new trees to reach maturity, the new trees will offset 3,527 lbs. of atmospheric carbon, surpassing the amount that the removed trees previously sequestered. The new trees will continue to grow in diameter and offset more carbon over time.



# SHRUBS & GROUNDCOVERS

**Native Deciduous Shrubs**

- Summersweet
- Dwarf Fothergilla
- Oakleaf Hydrangea

**Native Evergreen Shrubs**

- Inkberry

**Groundcovers**

- Vinca
- Dwarf Fragrant Sumac



# PROPOSED PLAN



## Eastern Redbud

## Cercis canadensis



Cercis canadensis

Common Name: Eastern Redbud

Height: To 30'

Width: To 30'

Rate: Medium

Habit: Small tree with multiple trunks.  
Flat, broad crown with ascending branches

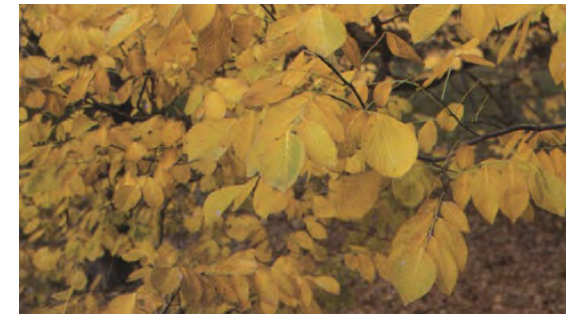
Hardiness: Zones 4 to 9

Seasonal Character: Bright magenta and pink flowers emerge in early spring prior to most other foliage and flowers. Dark bronzy foliage follows, turning bluish green in summer. Fall color ranges from brownish green to bright yellow.



## American Yellowwood

## Cladrastis kentukea



Cladrastis kentukea

Common Name: American Yellowwood

Height: To 50'

Width: To 60'

Rate: Medium

Habit: A low branching tree with a broad, rounded crown.

Hardiness: Zones 4 to 8.

Seasonal Character: Smooth, gray bark makes for a beautiful winter silhouette. New foliage opens yellowish green, changing to bright green summer canopy. In late spring Cladrastis produces abundant fragrant white flowers. Fall color is a golden yellow.



## Winter King Green Hawthorn

## Crataegus viridis 'Winter King'



Crataegus viridis

Common Name: Winter King Green Hawthorn

Height: To 30'  
Width: To 30'  
Rate: Slow

Habit: Broad low-branched tree with vase-like structure and wide spreading thorny branches.

Hardiness: Zones 4 to 7

Seasonal Character: White flowers bloom in bunches in early May. Lustrous, dark green leaves and dense branching provide extremely dense shade in summer. Deep red fruits ripen in September and remain on the tree until winter. Fall foliage turns bronze-red to purple.



## Honeylocust

## Gleditsia triacanthos



Gleditsia triacanthos

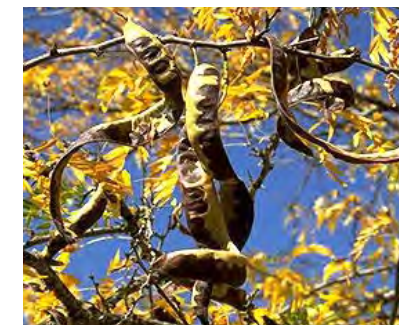
Common Name: Common Honeylocust

Height: To 70'  
Width: To 40'  
Rate: Fast

Habit: Open spreading crown and lightly shading foliage.

Hardiness: Zones 3 to 9.

Seasonal Character: Bright green in summer, leaves are among last to emerge. Fall color is a clear yellow.



## Tulip Tree

## Liriodendron tulipifera



Botanical Name: Liriodendron tulipifera

Common names: Tulip Tree, Tulip Poplar

Height: To 90'  
Width: To 40'  
Rate: Fast

Habit: Liriodendron grows best in full sun and is used as a specimen tree but also thrives in wooded conditions. Pyramidal in youth, ovoid canopy at maturity. In wooded areas trunks form straight, branchless columns.

Hardiness: Zones 4 to 9, not recommended as a street tree.

Seasonal Character: Flowers May to early June, golden yellow fall foliage

## Swamp White Oak

## Quercus bicolor



Quercus bicolor

Common Name: Swamp White Oak

Height: To 60'  
Width: To 60'  
Rate: Medium

Habit: Round topped and symmetrical

Hardiness: Zones 3 to 8.

Seasonal Character: Lustrous, dark green summer foliage provides dense shade. In autumn, coloration ranges from yellow-brown to bright red.



Summersweet, Sweet Pepperbush

*Clethra alnifolia*



Botanical Name: *Clethra alnifolia*  
Common Name: **Summersweet, Sweet Pepperbush**

Height: To 8'  
Width: To 6'  
Rate: Medium to fast

Habit: Oval, round-topped deciduous shrub, with an erect, dense, leafy, character often suckering to form broad colonies. Tolerant to wet conditions.

Hardiness: Zones 3 to 9

Seasonal Character: Late to leaf out in spring; lustrous deep green in summer; pale yellow to rich golden-brown in fall; white, fragrant flowers July to August.

Cultivars: 'Compacta'  
'Hummingbird'



Dwarf Fothergilla

*Fothergilla gardenii*



*Fothergilla gardenii*  
Common Name: Dwarf Fothergilla

Height: To 3'  
Width: Variable  
Rate: Slow

Habit: Dense, rounded deciduous shrub with wide-spreading branches.

Hardiness: Zones 4 to 9

Seasonal Character: Fragrant white flowers occur in clusters in April and May before foliage. Blue green summer foliage turns orange to scarlet in fall.



## Oakleaf Hydrangea

## *Hydrangea quercifolia*



Botanical Name: ***Hydrangea quercifolia***

Common Name: **Oakleaf Hydrangea**

Height: To 8'  
Width: Variable  
Rate: Medium

Habit: Upright mounding deciduous shrub.

Hardiness: Zones 5 to 9

Seasonal Character: White flowers turn purple and then brown in mid summer. Deep green glossy leaves turn red to purple in fall. Has exfoliating copper bark.



## Inkberry

## *Ilex glabra*



Botanical Name: ***Ilex glabra***

Common Name: **Inkberry**

Height: To 8'  
Width: To 10'  
Rate: Medium

Hardiness: Zones 4 to 9

Habit: Upright, much branched ever-green shrub.

Seasonal Character: Lustrous dark green foliage year round. Black fruits stay on plant from September until the following May.

Cultivars: 'Compacta' - to 5' HT.  
'Gem Box' - to 3' HT.  
'Shamrock' - to 5' HT.



## Dwarf Fragrant Sumac

## *Rhus aromatica* 'Gro-low'



Botanical Name: *Rhus aromatica* 'Gro-low'

Common Name: Dwarf Fragrant Sumac

Height: To 30"  
Width: To 8'-0"  
Rate:

Hardiness: Zones 3 to 9

Habit: Low, irregular spreading shrub. Ability to sucker and spread by roots

Seasonal Character: Hairy red fruits appear in August and September. Fall foliage ranges from orange to reddish purple.

Additional Notes: Salt tolerant, moderate drought tolerance and woody branches can handle snow weight.



## Periwinkle

## *Vinca minor*



Botanical Name: *Vinca minor*

Common Name: Periwinkle

Height: 3" To 6"  
Width: 6" To 18"  
Rate: Rapid

Hardiness: Zones 4 to 8

Habit: Non-climbing, dense evergreen mat

Seasonal Character: Shiny dark green oblong to oval leaves; 1/2" lilac-blue funnel-shaped flowers in spring.

