

Modifications to Medford St & Broadway Plaza to Expand Outdoor Dining Options

Select Board Presentation 06-29-20

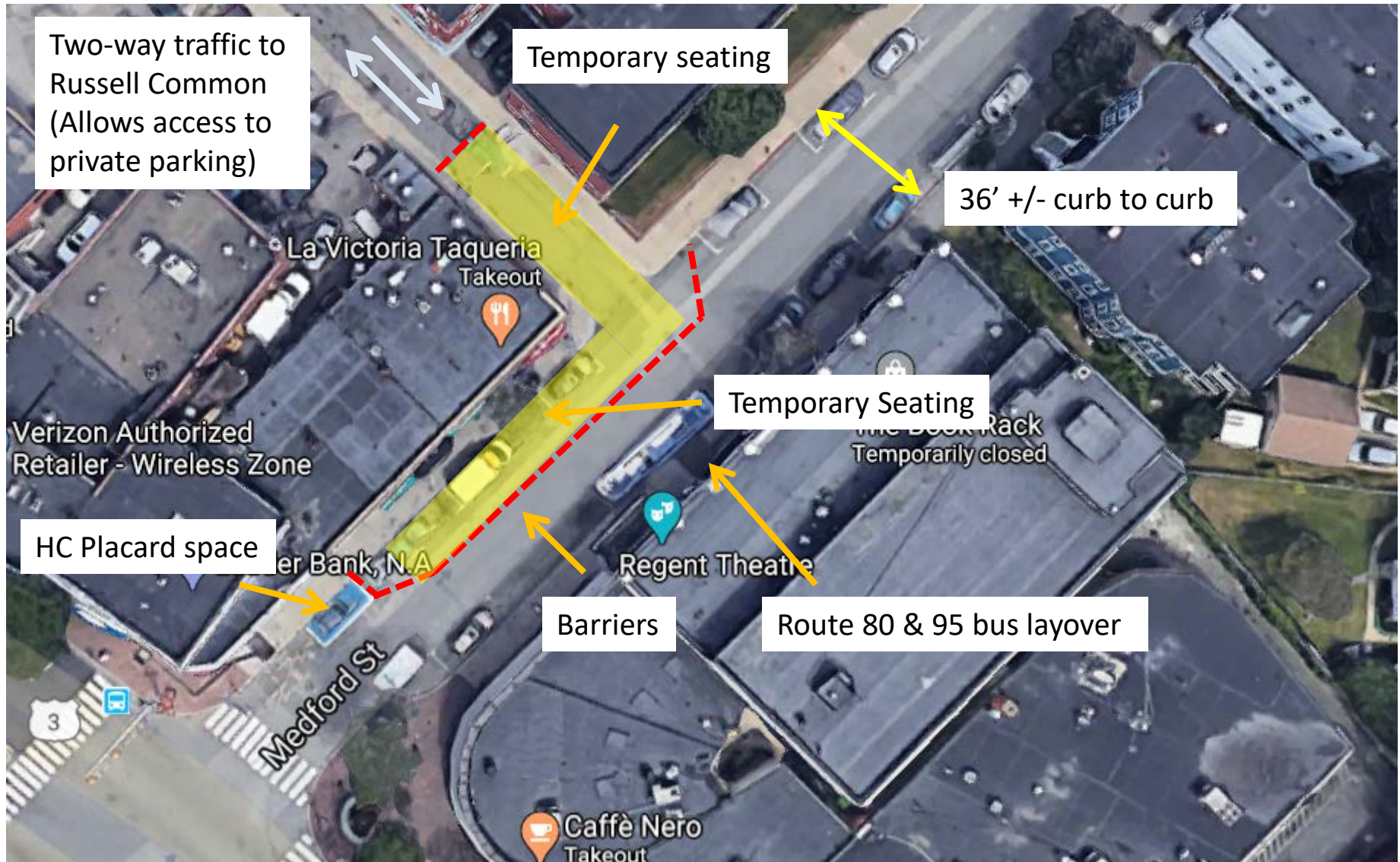
1. Proposed Modifications to Medford St
2. Proposed Modifications to Broadway @ Broadway Plaza
3. Coordination with Center Sidewalk Project
4. MassDOT Shared Streets & Spaces Grant

Medford St @ Mass Ave Existing Conditions



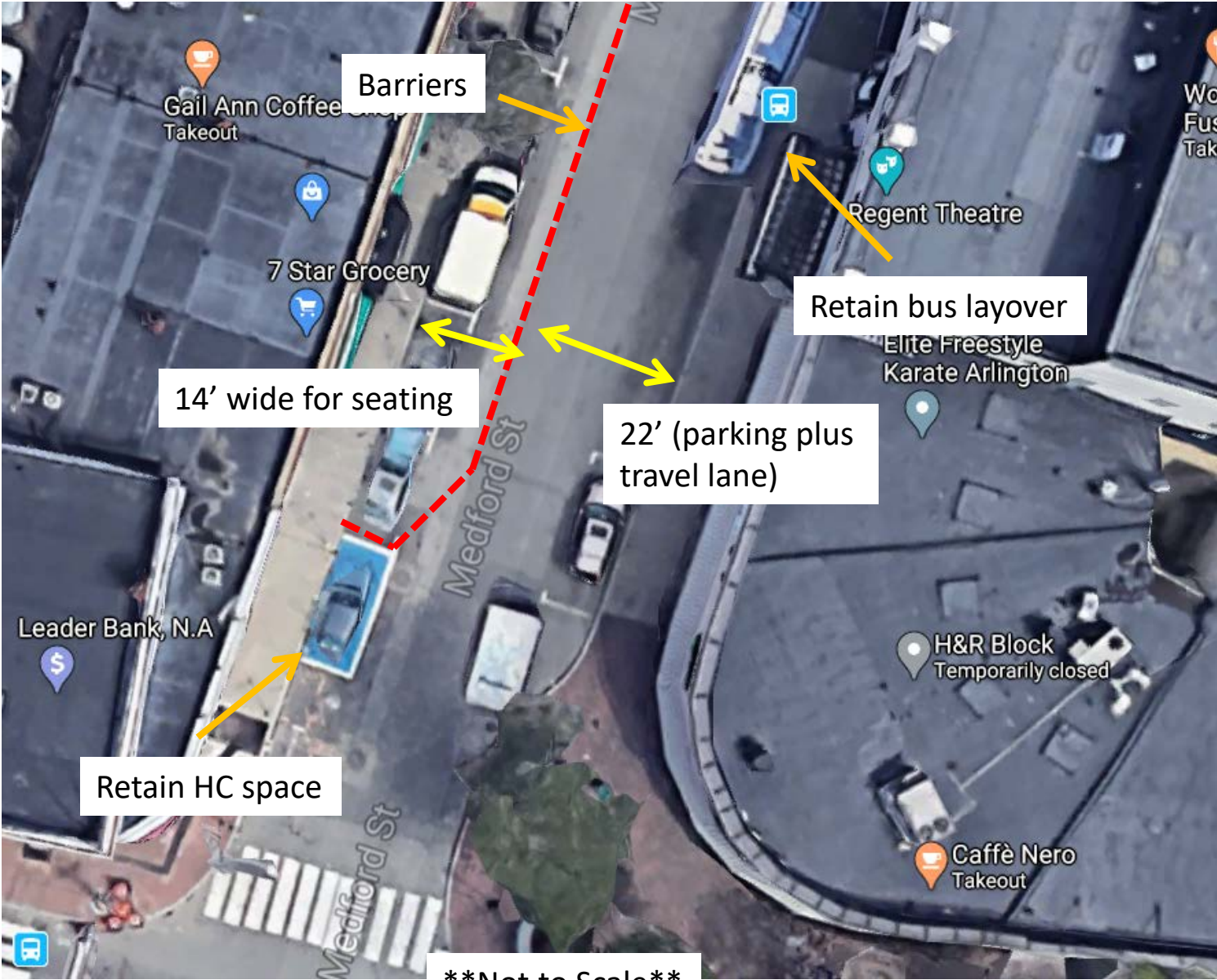
****Not to Scale****

Proposed Modifications to Medford St and Park Terrace (high level view)



Not to Scale

Proposed Modifications to Medford St and Park Terrace (detailed view)



Not to Scale

Proposed Modifications to Medford St and Park Terrace (seating space view)



Each seating zone
approximately 490 sq. ft.

14' wide

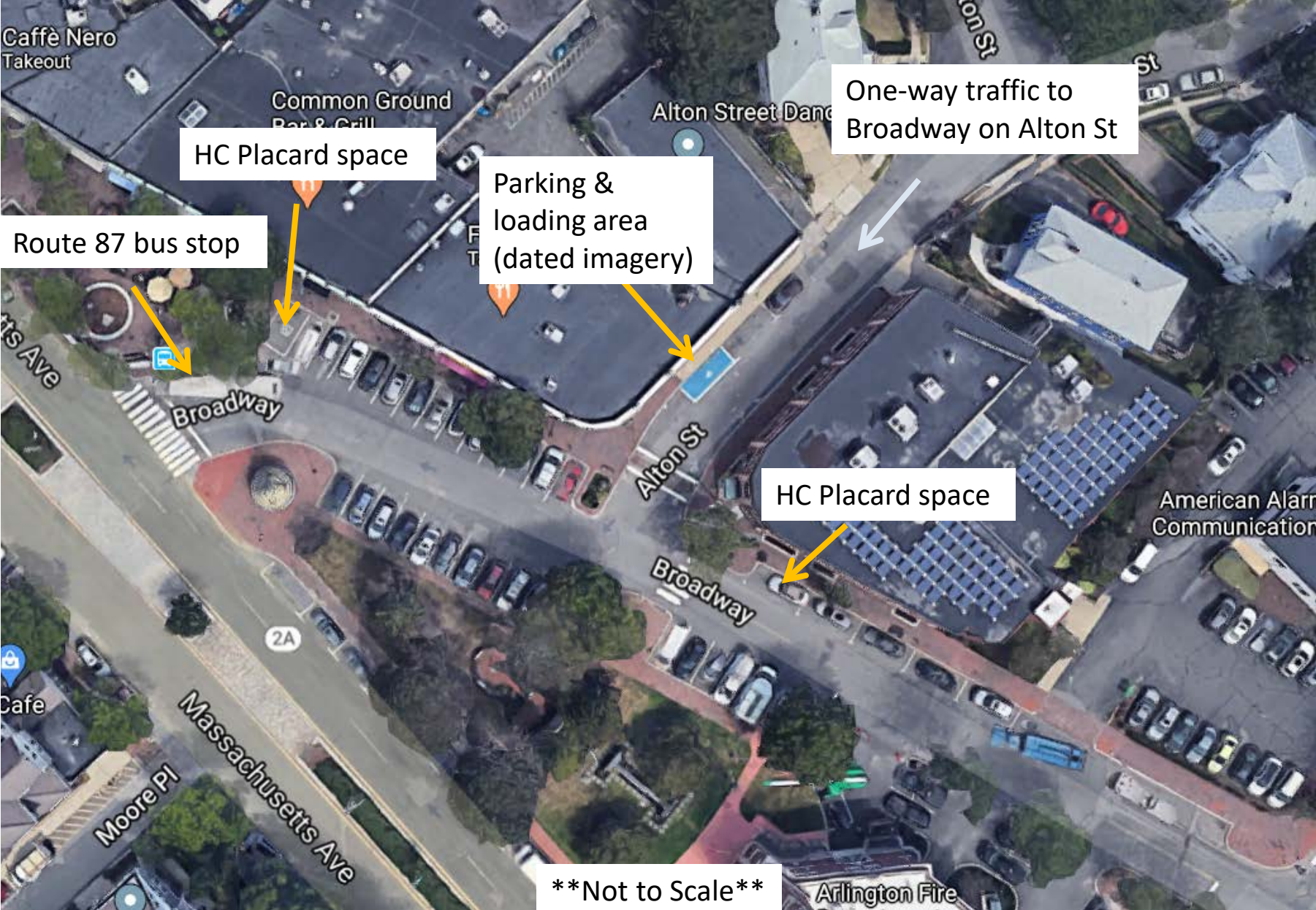
35' long

Not to Scale

Modifications to Medford St. and Park Terrace

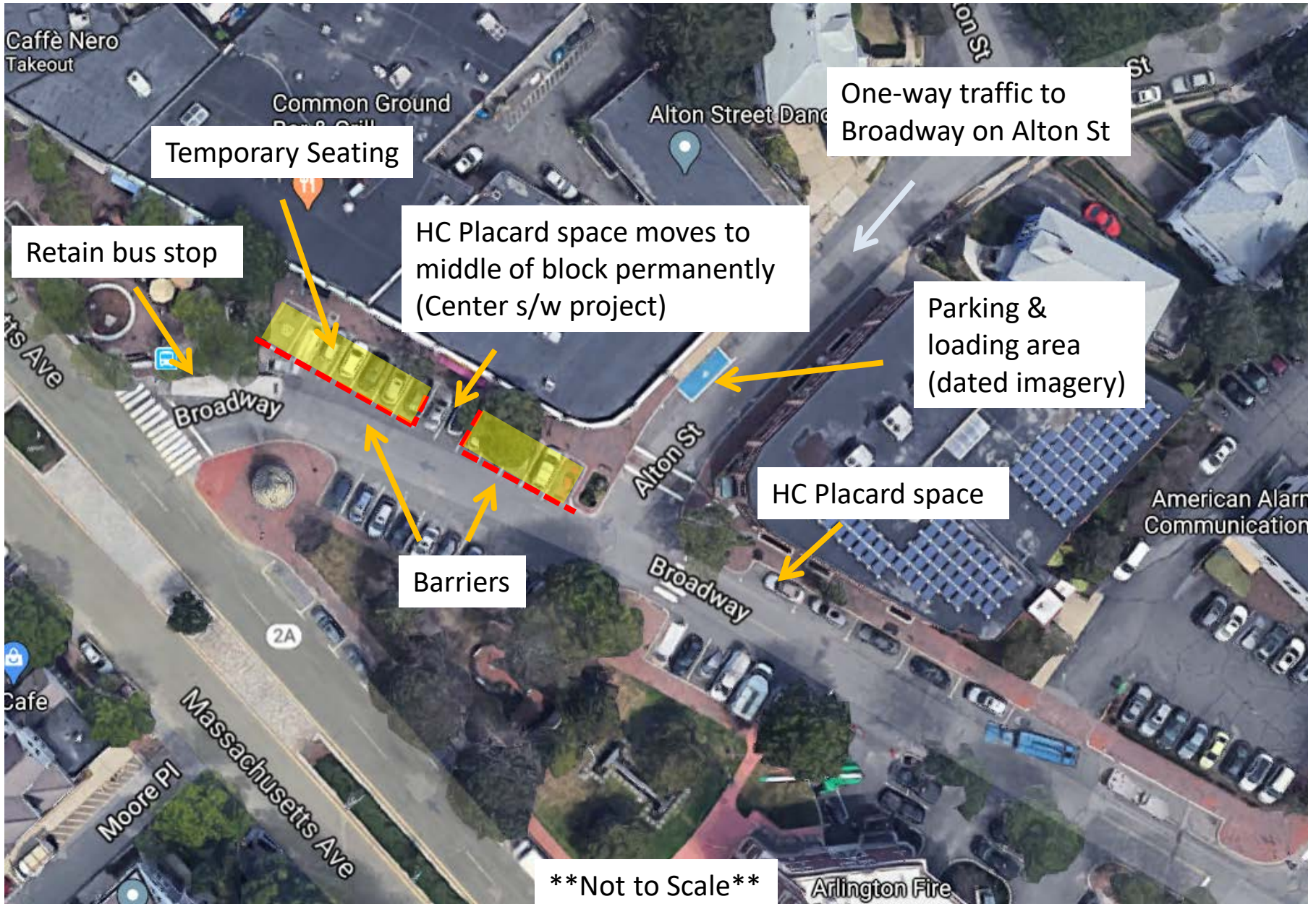
- 5 parking spaces temporarily repurposed
- Small encroachment into travel lane (parking lane + 6')
- Allow two-way traffic on Park Terrace from Russell Common Lot
- Convert small section of Park Terrace between Medford St & private parking to pedestrian only space
- Creates approximately 1,960 sq. feet of outdoor seating area

Broadway @ Broadway Plaza Existing Conditions

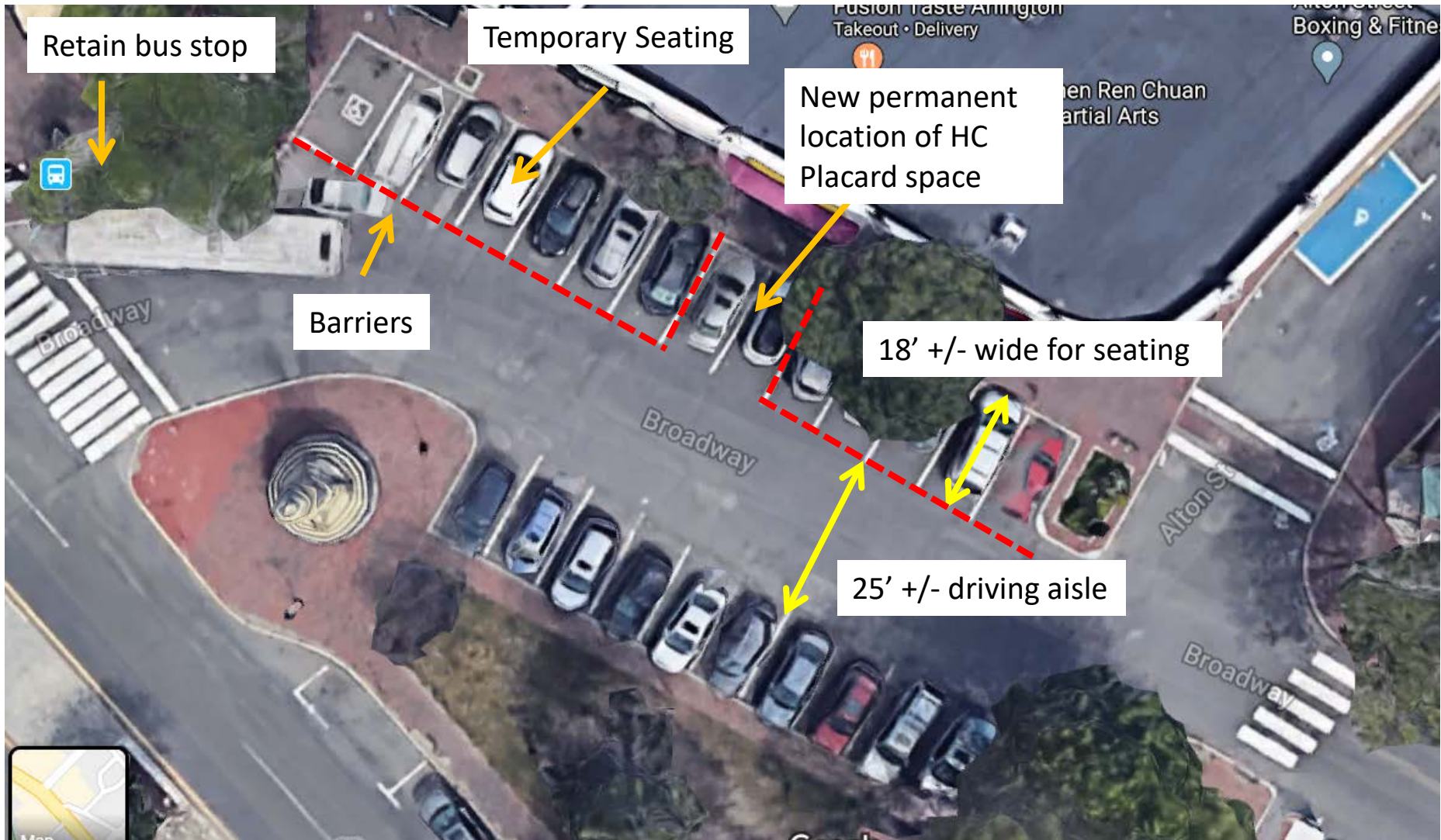


Not to Scale

Proposed Modifications to Broadway @ Broadway Plaza (high level view)



Proposed Modifications to Broadway @ Broadway Plaza (detailed view)



****Not to Scale****

Proposed Modifications to Broadway @ Broadway Plaza (seating space view)

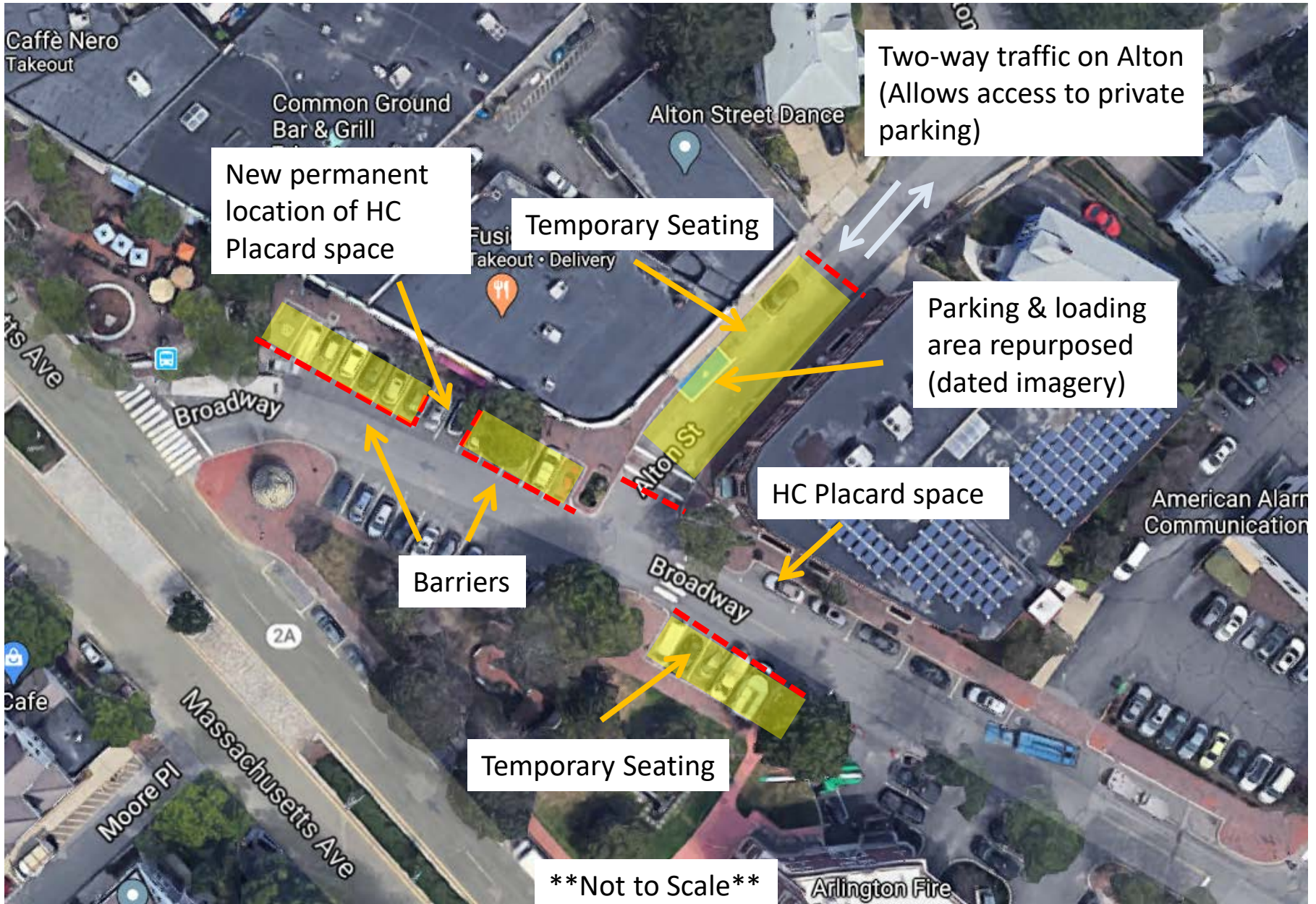


Not to Scale

Modifications to Broadway @ Broadway Plaza

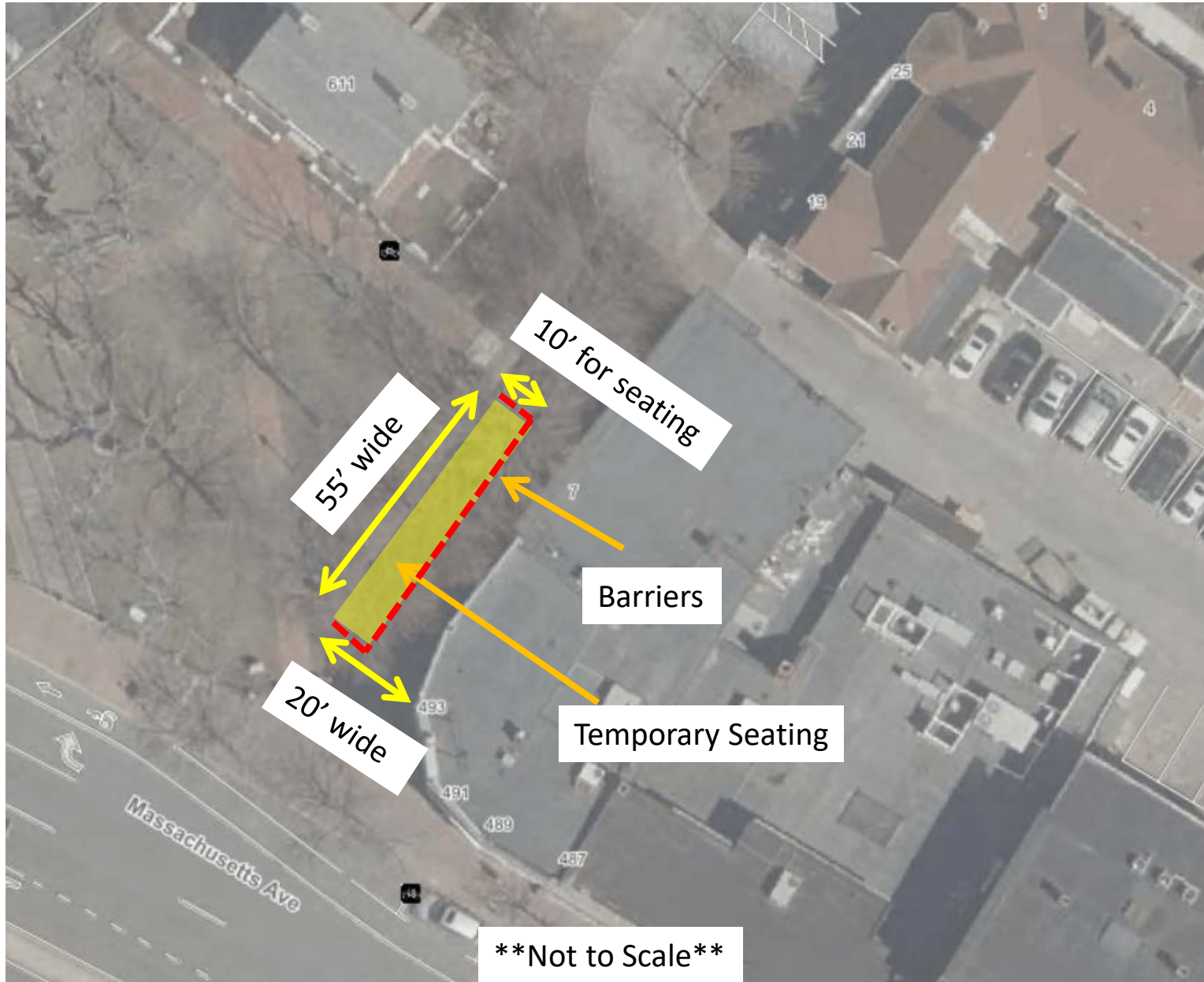
- 12 parking spaces temporarily repurposed
- Retains HC Placard space in new location
- Creates approximately 1,980 sq. feet of outdoor seating area

Broadway @ Broadway Plaza Additional Concepts Considered

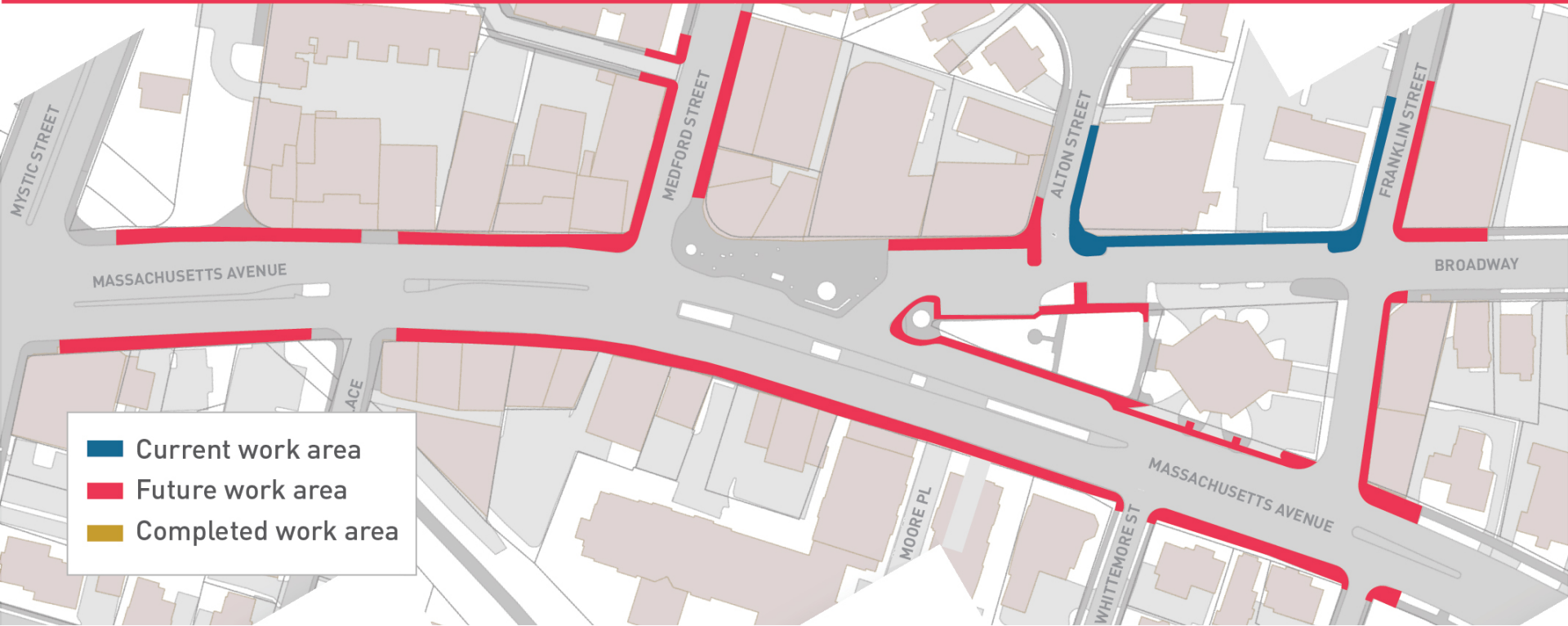


****Not to Scale****

Old Mystic Walkway Additional Concepts Considered



Arlington Center Sidewalk Project



MassDOT Grant



Shared Streets and Spaces Grant Program

A Quick-Launch/Quick-Build Municipal Funding Program

- Rolling application starting June 22
- Broad eligibility, can include outdoor seating and shared/slow streets program
- Technical assistance with completing applications

For Approval

- Repurpose 5 parking spaces on west side of Medford St. between Mass Ave & Park Terrace + 6' into driving lane – convert to seating area
- Allow Park Terrace two-way traffic with access from Russell Common Lot
- Convert section of Park Terrace between Medford St & private parking (approximately 62') to pedestrian only space
- Repurpose 12 parking spaces on north side of Broadway at Broadway Plaza – convert to seating area