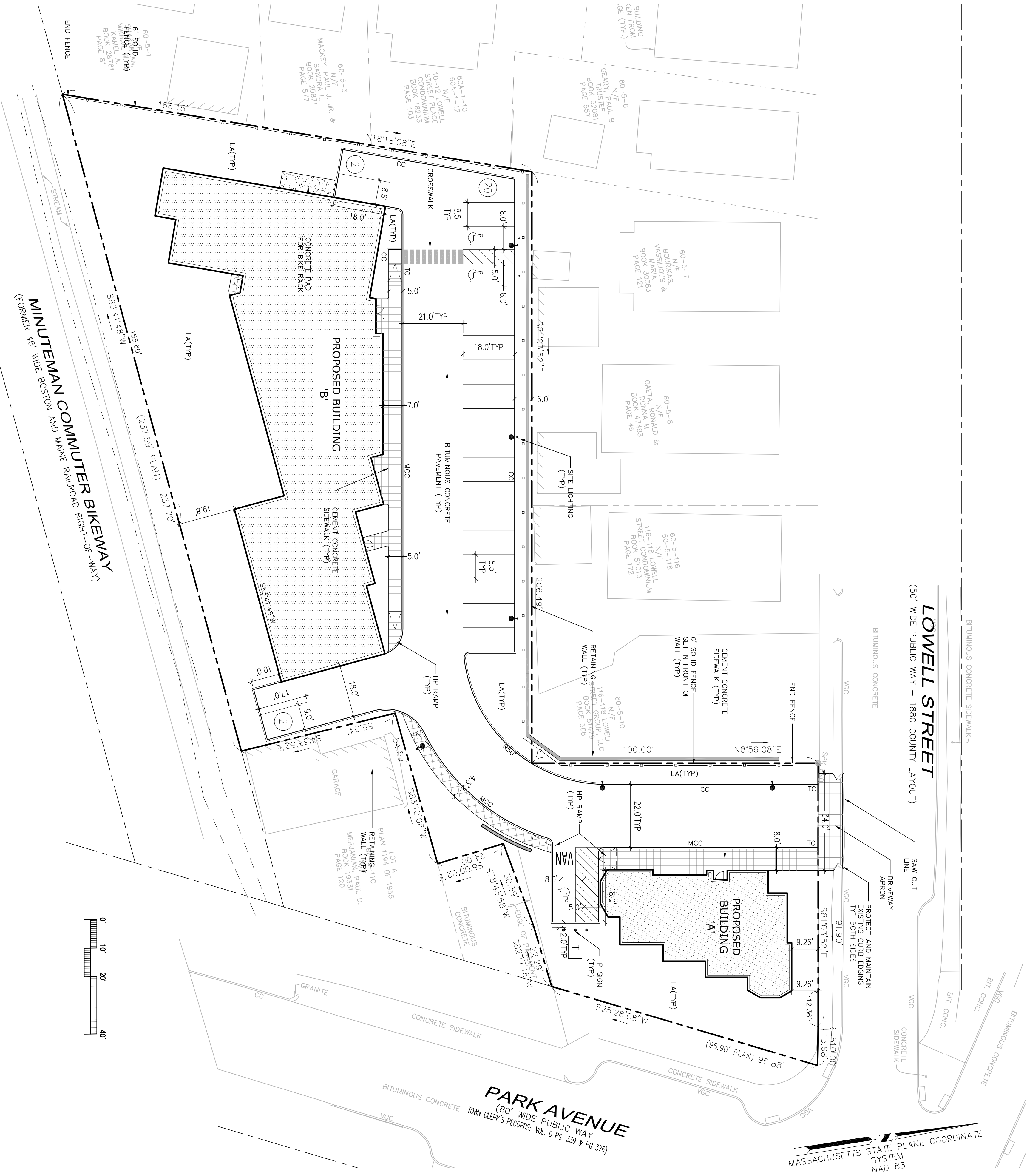


LAYOUT AND MATERIAL NOTES

1. EXISTING CONDITIONS INFORMATION IS REPRODUCED FROM THE SURVEY PREPARED BY NITSCH ENGINEERING OF BOSTON, MA AND IS DATED OCTOBER 22, 2013 AND REVISED THROUGH 3-22-2017.
2. THE LOCATIONS OF UNDERGROUND UTILITIES SHOWN ARE BASED ON THE SURVEY REFERENCED ABOVE. THE CONTRACTOR SHALL NOTIFY DISSAFE AND THE PROPER LOCAL AUTHORITIES OR RESPECTIVE UTILITY COMPANIES TO CONFIRM THE LOCATION OF ALL EXISTING UTILITIES BEFORE COMMENCING WORK. ANY DAMAGE DUE TO FAILURE OF THE CONTRACTOR TO VERIFY THE PROPER AUTHORITIES SHALL BE BORNE BY THE CONTRACTOR.
3. CONTRACTOR(S) SHALL THOROUGHLY FAMILIARIZE THEMSELVES WITH ALL CONSTRUCTION DOCUMENTS, SPECIFICATIONS, AND SITE CONDITIONS PRIOR TO BIDDING AND PRIOR TO CONSTRUCTION.
4. ANY DISCREPANCIES BETWEEN DRAWINGS, SPECIFICATIONS, AND SITE CONDITIONS SHALL BE REPORTED IMMEDIATELY TO THE OWNER'S REPRESENTATIVE FOR CLARIFICATION AND RESOLUTION PRIOR TO BIDDING OR CONSTRUCTION.
5. ALL WORK CONDUCTED WITHIN PUBLIC RIGHT-OF-WAYS SHALL BE IN ACCORDANCE WITH THE RESURFACING AND SPECIFICATIONS OF THE TOWN OF ARLINGTON, MASSACHUSETTS.
6. SEE ARCHITECTURAL DRAWINGS FOR EXACT BUILDING DIMENSIONS AND ALL DETAILS CONTIGUOUS TO THE BUILDING, INCLUDING SIDEWALKS, RAMPS, UTILITY ENCLOSURES, WALL PACKS, CONCRETE DOOR PADS, ROOF DRAINS, ETC.
7. ACCESSIBLE CURB RAMPS SHALL BE PER THE MASSACHUSETTS ARCHITECTURAL ACCESS BOARD (AAB) AND THE AMERICANS WITH DISABILITIES ACT (ADA) ACCESSIBILITY GUIDELINES, WHICHEVER IS MORE STRINGENT.
8. THE FOLLOWING LAYOUT CRITERIA SHALL CONTROL UNLESS OTHERWISE NOTED ON THE PLAN:
ALL DIMENSIONS ARE TO OUTSIDE FACE OF BUILDING.
ALL DIMENSIONS ARE TO FACE OF CURB AT GUTTER LINE.
ALL DIMENSIONS ARE TO FACE OF SIDEWALK OR RAMPS.
ALL TIES TO PROPERTY LINES ARE PERPENDICULAR TO THE PROPERTY LINE UNLESS OTHERWISE NOTED.
9. FOR LAYOUT AND DIMENSIONING OF BUILDINGS, SEE ARCHITECTURAL DRAWINGS.
10. SCREENED IMAGES SHOW EXISTING CONDITIONS, WHERE EXISTING BUILDINGS ARE TO BE DEMOLISHED OR REMOVED BY PROPOSED BUILDINGS AND/OR SITE ELEMENTS, THE EXISTING CONDITION WILL BE REMOVED, ABANDONED AND/OR CAPED OR DEMOLISHED AS REQUIRED.



NOTES

DO NOT SCALE DRAWINGS.

LEGEND

- PROPERTY LINE
- SITE LIGHTING
- ⊙

WALKWAY LIGHTING
- ▬▬▬

CEMENT CONCRETE PAVEMENT
- ▬▬▬

MONOLITHIC CONCRETE CURB
- ▬▬▬

FLUSH CONCRETE CURB
- ▬▬▬

CONCRETE CURB
- ▬▬▬

TRANSITION CURB
- ▬▬▬

LANDSCAPE AREA
- ▬▬▬

PARKING COUNT
- ▬▬▬

42" RAIL
- ▬▬▬

FENCE
- ▬▬▬

TRANSFORMER
- ▬▬▬

SAW CUT LINE
- STEEL BOLLARD

LA

LANDSCAPE AREA

TC

TRANSITION CURB

CC

CONCRETE CURB

FCC

FLUSH CONCRETE CURB

MCC

MONOLITHIC CONCRETE CURB

⊙

CEMENT CONCRETE PAVEMENT

▬▬▬

CEMENT CONCRETE CURB

▬▬▬

TRANSITION CURB

▬▬▬

LANDSCAPE AREA

▬▬▬

PARKING COUNT

▬▬▬

42" RAIL

▬▬▬

FENCE

▬▬▬

TRANSFORMER

▬▬▬

SAW CUT LINE

•

STEEL BOLLARD

**DAVIS
SQUARE
ARCHITECTS**

240A Elm St.,
Somerville, MA 02144
617 628 5700
www.davisquarearchitects.com

Consultant



Site Planning Civil Engineering Landscape Architecture
Fosterborough, MA
508.473.4114 phone
info@devellis.com
DeVellis Zrein Inc.

Project
DOWNING SQUARE
19R Park Ave, Arlington, MA 02474

Title

LAYOUT AND MATERIALS PLAN

Designed by	Drawn by No.
IAZ	
Checked	
Project No.	
16045	
Scale	
1" = 20'	
Date	
09.08.20	

C-1