



PUBLIC WORKS DEPARTMENT
TOWN OF ARLINGTON

Phone: (781) 316-3104 Fax: (781) 316-3281

Memo to: Select Board

From: Mike Rademacher, DPW Director

Date: September 9, 2021

Subject: Broadway Plaza Tree Removal/Planting

I am writing to request approval for tree removals associated with work proposed at Broadway Plaza. This hearing is being presented to the Select Board as the trees in question are part of a public construction project and State Law allows the Select Board to vote directly in such instances. This project has also been presented to the Arlington Tree Committee.

The plaza project is a continuation of the sidewalk replacement constructed last summer. At that time, one healthy tree removal was necessary while 14 new trees were planted.

The work now proposed at Broadway Plaza requires the removal of several trees to complete. Three (3) trees are within an area to be excavated by the MWRA to complete work on a large water main. An additional nine (9) trees are proposed to be removed to facilitate the reconstruction of the Broadway Plaza surface. The project proposes to plant nine (9) trees as part of the restoration work. Between the sidewalk and plaza projects, a net gain of 5 trees will be provided for the area. Town wide, we have planted 218 trees this year and removed 82. I expect each of those numbers to roughly double by the end of the calendar year.

The design team gave considerable thought and consideration to the tree removals. The three associated with the MWRA work are unavoidable. They are directly impacted by the excavation needed to replace the water main valve. The other nine are proposed to be removed due to a few concerns. First, the roots associated with these trees have caused significant buckling of the current brick surface. It is believed that in order to construct the new ADA compliant plaza surface, significant root removal will be necessary leaving the trees in question compromised. Second, several of the existing trees are also located over other utilities and are at risk for future utility work. The new tree locations were selected to minimize conflict with underground utilities.

The proposed trees will also provide for a more diverse tree species population at the plaza. In addition to planting two Honeylocust (current tree species), three Zelkovas and 4 Red Maples are proposed. The tree species were reviewed and approved by Arlington's Tree Warden as suitable for this location.

Three plans are included with this memo. The first is an overall view of both the sidewalk and plaza project tree impacts. The second plan shows only the plaza tree impacts. The third plan is an overview of the proposed plaza layout.

Thank you for your consideration of this request.

Sincerely,

Michael Rademacher



Tree Inventory

Massachusetts Avenue Sidewalk Reconstruction Project

Arlington, MA

PAVEMENT NOTES

PROPOSED CEMENT CONCRETE SIDEWALK, GRID SCORED
SIDEWALK, ACCENT BANDS, AND WHEELCHAIR RAMPS

SURFACE: 4" CEMENT CONCRETE AIR ENTRAINED
(4000 PSI ¾", 610 LB).

SUBBASE: 8" GRAVEL BORROW (TYPE B) ++

++ WHERE EXISTING GRAVEL IS FOUND TO BE SUITABLE, THE
EXISTING GRAVEL MAY BE USED IN PROPOSED SUBBASE,
AFTER APPROVAL BY THE ENGINEER OR TOWN.

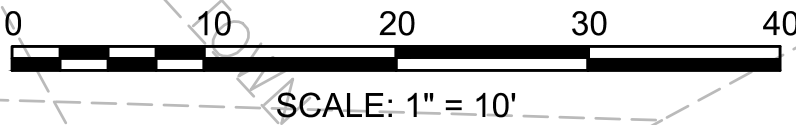
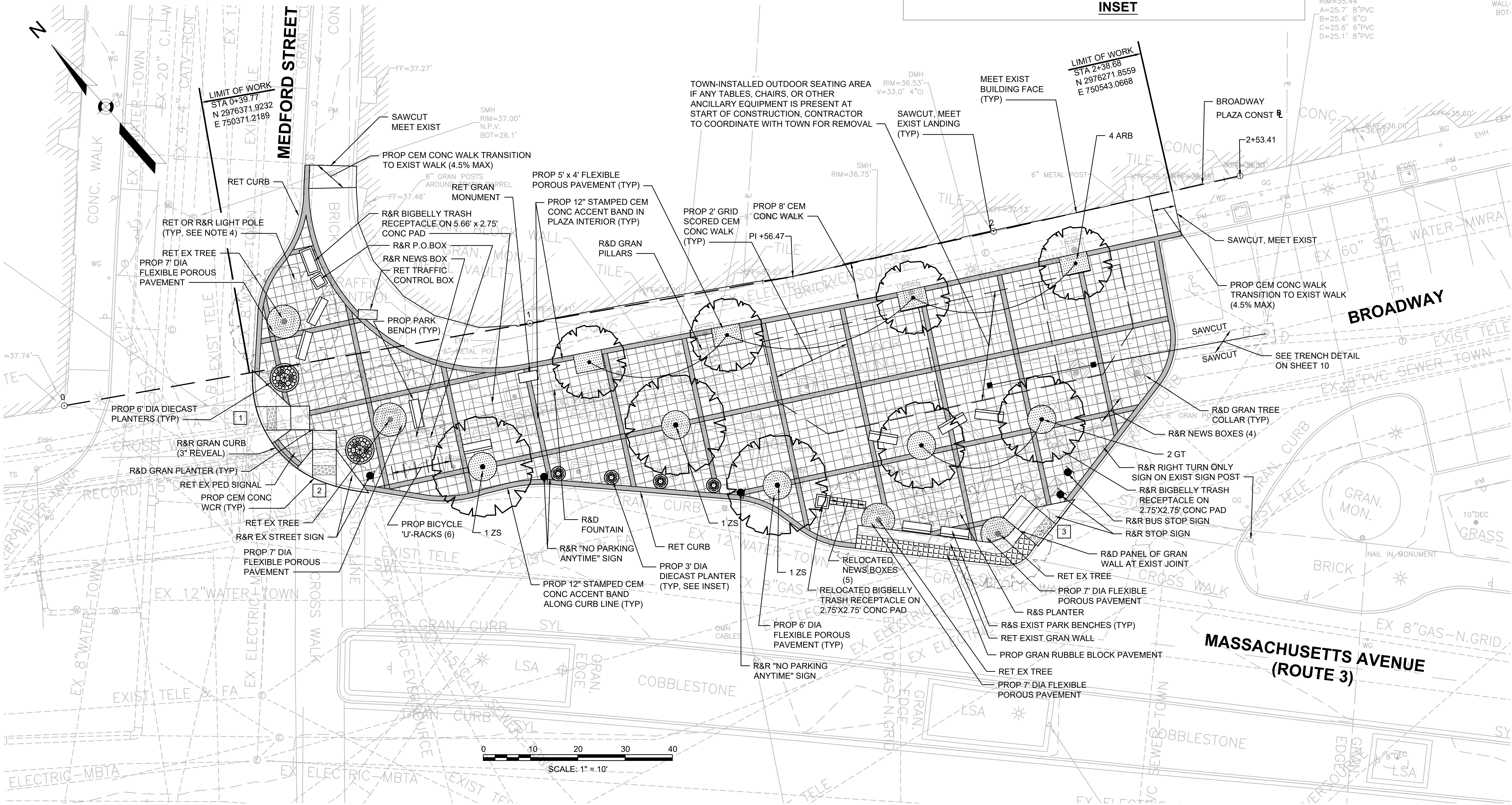


INSET

ARLINGTON
BROADWAY PLAZA
CONSTRUCTION PLAN
SHEET 03 OF 11

DMH
RIM=35.44'
A=25.7' 8"PVC
B=25.4' 6"CI
C=25.6' 6"PVC
D=25.1' 8"PVC

RIM=
WALL:
BOT:



PLANT SCHEDULE - PLANTERS

SHRUBS	QTY	BOTANICAL NAME	COMMON NAME	SIZE
FE	18	Festuca glauca 'Elijah Blue'	Elijah Blue Fescue	1 GAL.
HR	36	Hemerocallis 'Rosy Returns'	Stella d'oro Daylily	1 GAL.
HS	18	Hemerocallis 'Stella d'Oro'	Rosy Returns Daylily	1 GAL.
PA	6	Pennisetum alopecuroides 'Little Bunny'	Little Bunny Dwarf Fountain Grass	2 GAL.
PGA	2	Picea glauca 'Conica'	Dwarf Alberta Spruce	5 - 6' HT.
RM	4	Rosa Meidland 'Scarlet'	Scarlet Meidland Rose	3 GAL.

PLANT SCHEDULE - TREES

TREES	QTY	BOTANICAL NAME	COMMON NAME	SIZE
ARB	4	Acer rubrum 'Bowhall'	Bowhall Red Maple	3 - 3 1/2" CAL.
ZS	3	Zelkova serrata 'Green Vase'	Green Vase Zelkova	4 1/2 - 5" CAL.
GT	2	Gleditsia triacanthos 'Skyline'	Skyline Honeylocust	4 1/2 - 5" CAL.

NOTES:

1. FLEXIBLE POROUS PAVEMENT AROUND EXISTING & PROPOSED TREES TO RECEIVE IRRIGATION.
2. TREES IN PLANTERS TO HAVE INTERNAL RESERVOIRS.
3. ALL TREES TO HAVE MIN 6' - 8" BRANCH HEIGHT
4. CONTRACTOR TO COORDINATE WITH TOWN AND/OR ENGINEER WHEN REMOVING AND RESETTING LIGHT POLES.
5. INDIVIDUAL TREE PROTECTION TO BE PROVIDED FOR EXISTING TREES TO REMAIN.