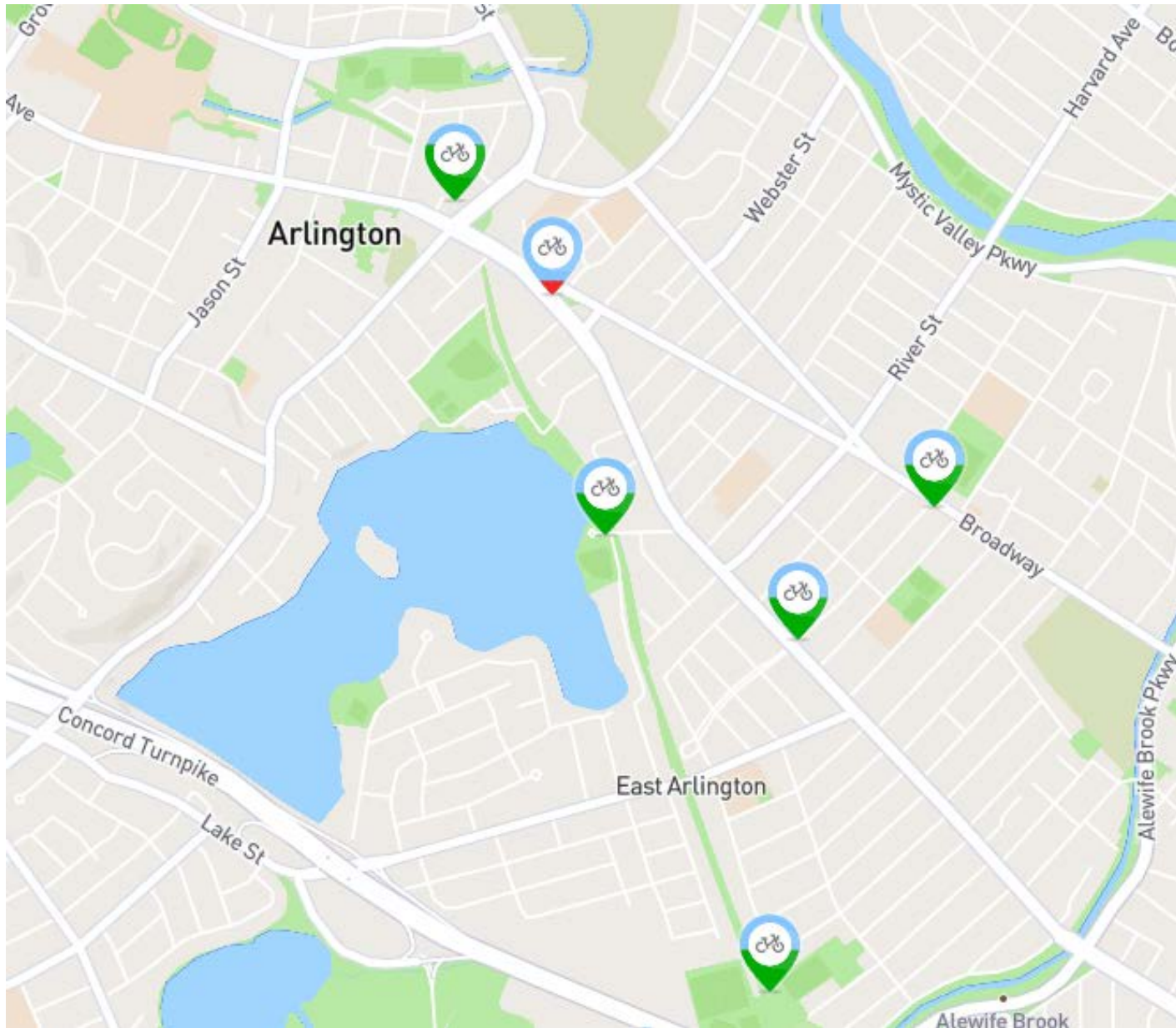
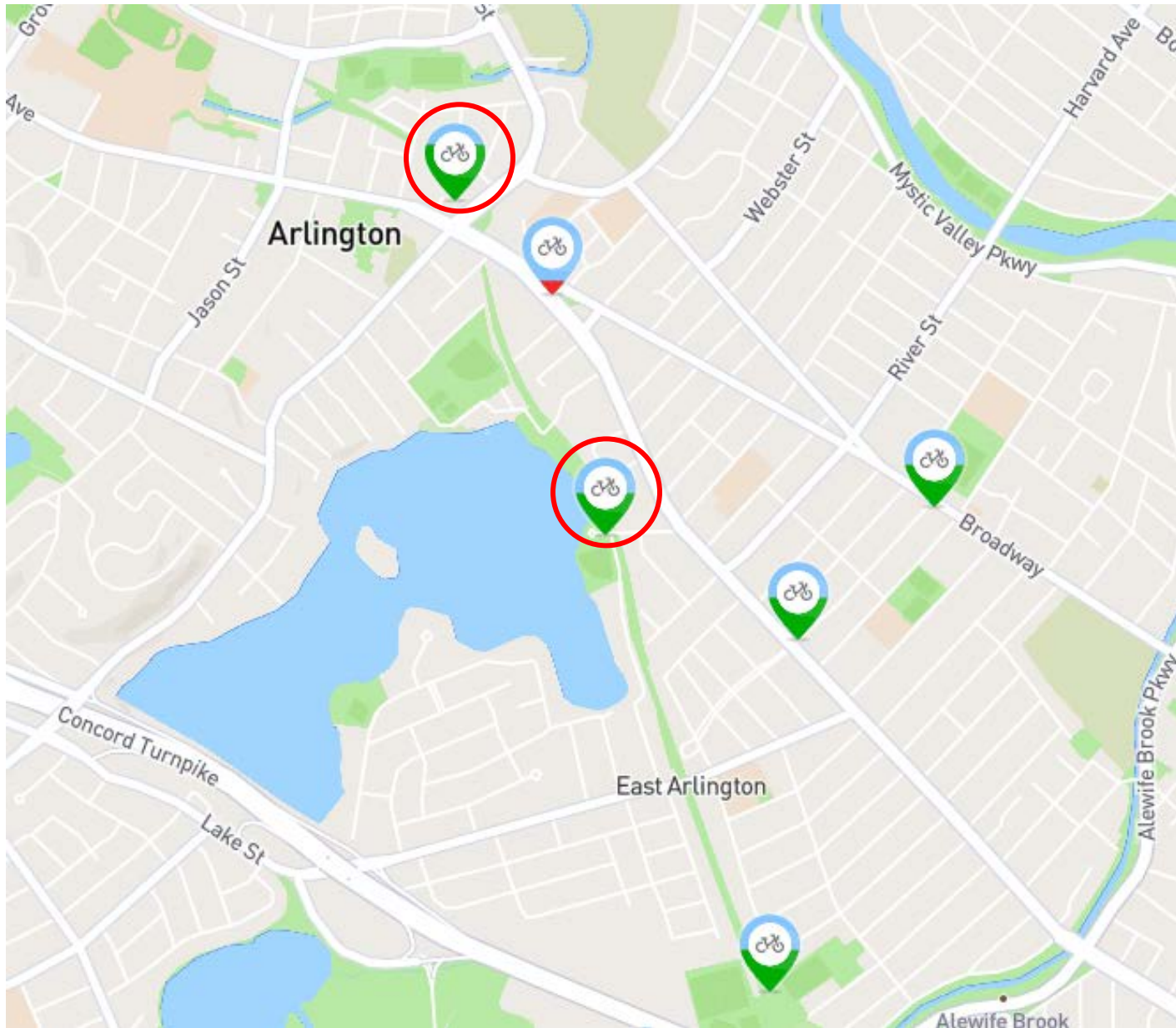


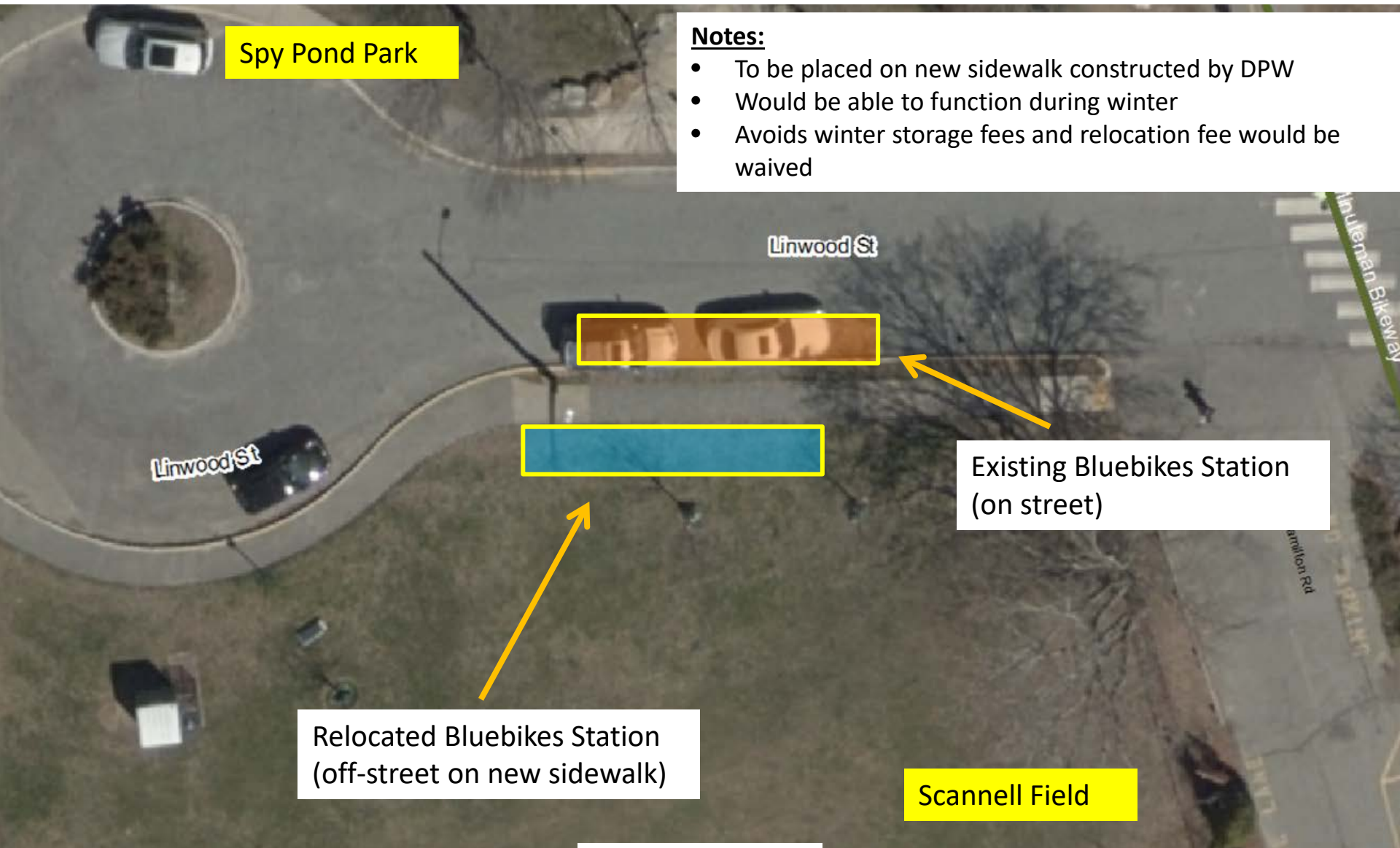
# Arlington Bluebikes Stations: Existing System Map



# Arlington Bluebikes Stations to be Relocated Off-Street



## Linwood St at Minuteman Bikeway New Off-Street Location



### Notes:

- To be placed on new sidewalk constructed by DPW
- Would be able to function during winter
- Avoids winter storage fees and relocation fee would be waived

Relocated Bluebikes Station  
(off-street on new sidewalk)

Existing Bluebikes Station  
(on street)

Scannell Field

**\*\*Not to Scale\*\***



# Linwood St at Minuteman Bikeway

## New Off-Street Location



Relocated Bluebikes Station  
(on sidewalk)



## Railroad Lot at Minuteman Bikeway Proposed Off-Street Location

### Notes:

- To be placed on existing brick sidewalk behind 633-641 Mass Ave
- Would be able to function during winter
- Avoids winter storage fees and relocation fee would be waived

Existing Bluebikes Station  
(on street)

Proposed Bluebikes Station  
(on sidewalk)

**\*\*Not to Scale\*\***



## Railroad Lot at Minuteman Bikeway Proposed Off-Street Location



Relocated Bluebikes Station  
(on sidewalk)

**\*\*Not to Scale\*\***



# Railroad Lot at Minuteman Bikeway

## Proposed Off-Street Location

