

CHS.NB.961

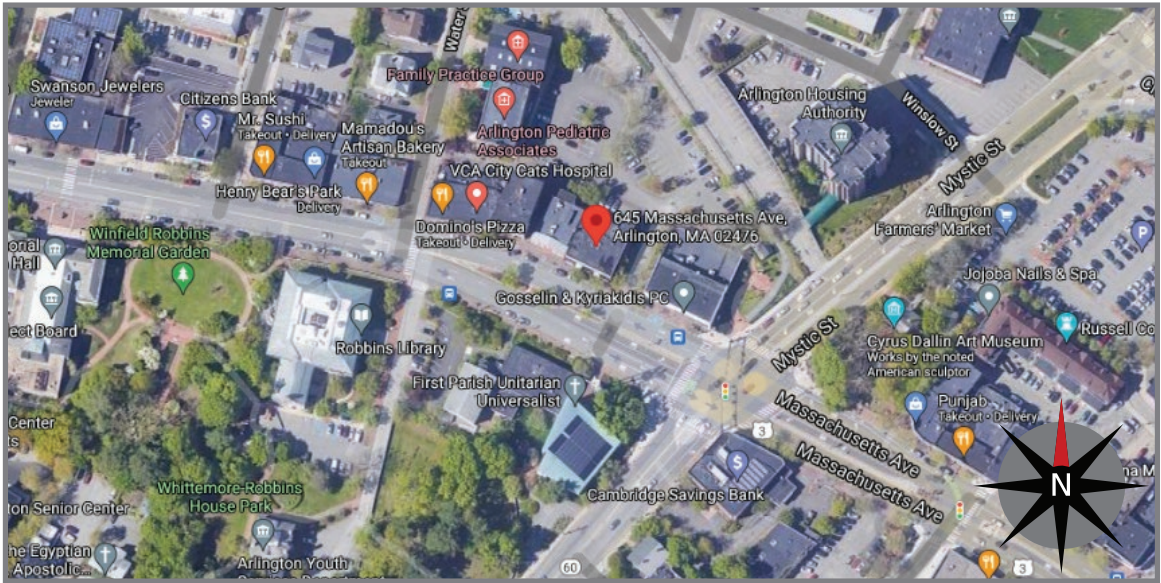
ARLINGTON MASS AVENUE

645 Massachusetts Avenue
Arlington, MA 02476



REVISION NOTES:

06.23.21	JM	Delete Octagons from All Awnings. Add Option 2, E12 and E13
07.01.21	RJW	Revised as noted.
09.09.21	RJW	Delete E03, add lettersets & elevations.



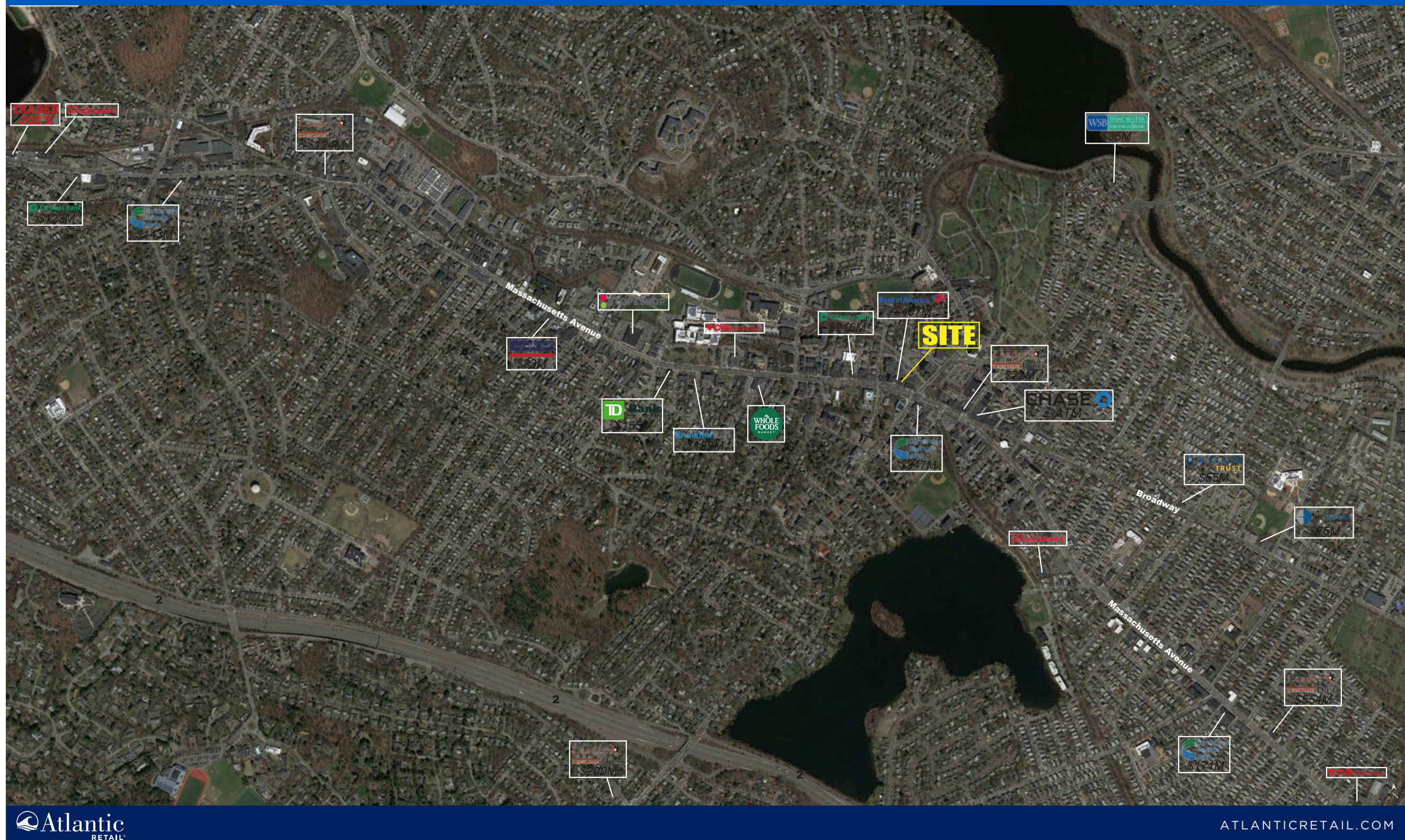
B95122



PHILADELPHIASIGN
BRINGING THE WORLD'S BRANDS TO LIFE



ARLINGTON, MA



© ATLANTIC RETAIL 2018 The information above has been obtained from sources believed reliable. While we do not doubt its accuracy, we have not verified it and make no guarantee, warranty or representation about it.



CHS.NB.961 - Arlington Mass Avenue
645 Massachusetts Avenue
Arlington, MA 02476

DESIGNER - JM

CREATED - 06.17.21

DRAWING - B95122



PHILADELPHIASIGN
BRINGING THE WORLD'S BRANDS TO LIFE

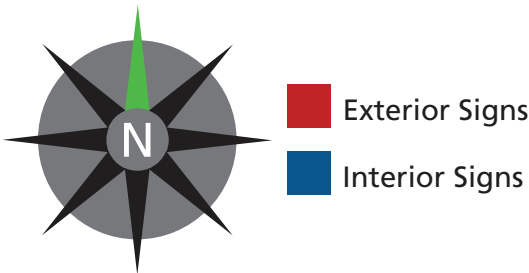
707 WEST SPRING GARDEN ST • PALMYRA, NJ • 08065
P: 856-829-1460 • F: 856-829-8549 • WEB: <http://www.philadelphiasign.com>

THIS IS AN ORIGINAL UNPUBLISHED DRAWING CREATED
BY P.S.C.O. IT IS SUBMITTED FOR YOUR PERSONAL USE
IN CONJUNCTION WITH A PROJECT BEING PLANNED
FOR YOU BY P.S.C.O. IT IS NOT TO BE SHOWN TO ANYONE
OUTSIDE YOUR ORGANIZATION NOR IS IT TO BE USED,
COPIED, REPRODUCED, OR EXHIBITED IN ANY FASHION.

Exterior Scope of Work

E01	LIF-WBO-18-LED	WHITE W/ BLUE OCTAGON ILLUM CHANNEL LETTERS	20.7SF
E02	NMP-XX	DARK NICKEL METAL PANEL	
E04	NMP-XX	DARK NICKEL METAL PANEL	
E05	LIF-WBO-14-LED	WHITE W/ BLUE OCTAGON ILLUM CHANNEL LETTERS	12.7SF
E06	NMP-XX	DARK NICKEL METAL PANEL	
E07	TC-W-A-RE	WALL MTD REGULATORY SIGN - BANK PATRONS ONLY (Re-ENGINEERED)	2SF
E08	TC-W-A-RE	WALL MTD REGULATORY SIGN - BANK PATRONS ONLY (Re-ENGINEERED)	2SF
E09	TC-W-A-RE	WALL MTD REGULATORY SIGN - BANK PATRONS ONLY (Re-ENGINEERED)	2SF
E12	LIF-WBO-18-LED	WHITE W/ BLUE OCTAGON ILLUM CHANNEL LETTERS	20.7SF

ALL SIGNS TO BE
REVIEWED/APPROVED
BY HRC



CHS.NB.961 - Arlington Mass Avenue
645 Massachusetts Avenue
Arlington, MA 02476

DESIGNER - JM
CREATED - 06.17.21
DRAWING - B95122



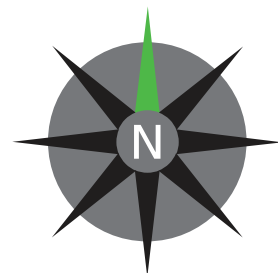
PHILADELPHIASIGN
BRINGING THE WORLD'S BRANDS TO LIFE
707 WEST SPRING GARDEN ST • PALMYRA, NJ • 08065
P: 856-829-1460 • F: 856-829-8549 • WEB: <http://www.philadelphiasign.com>

THIS IS AN ORIGINAL UNPUBLISHED DRAWING CREATED BY P.S.C.O. IT IS SUBMITTED FOR YOUR PERSONAL USE IN CONJUNCTION WITH A PROJECT BEING PLANNED FOR YOU BY P.S.C.O. IT IS NOT TO BE SHOWN TO ANYONE OUTSIDE YOUR ORGANIZATION NOR IS IT TO BE USED, COPIED, REPRODUCED, OR EXHIBITED IN ANY FASHION.

Floor Plan

Interior Scope of Work

I01	ADA-EX	ADA HANDICAPPED EXIT PLAQUE	.25SF
I01.1	CUST-VIN	MATCHING BRONZE VINYL BACKER	
I02	ADA-EX	ADA HANDICAPPED EXIT PLAQUE	.25SF
I02.1	CUST-VIN	MATCHING BRONZE VINYL BACKER	
I03	ADA-RRAG-A-G	ADA ALL GENDER RESTROOM SIGN - ACCESSIBLE	1.4SF
I04	ADA-RRAG-A-G	ADA ALL GENDER RESTROOM SIGN - ACCESSIBLE	1.4SF
I05	ADA-TW	ADA TELLER WALL SIGN	.1SF
I06	ADA-TW-ALS	ADA TELLER WINDOW - ASSISTIVE LISTENING SYSTEM	.1SF
I07	TPL-BTR-B-24	24" THIN PROFILE ILLUMINATED INTERIOR BLUE OCTAGON	4SF
I08	eATM-PANEL-SINGLE-SIDE-CAR	BRANDING PANEL FOR SINGLE SIDE CAR eATM 3.0	
I09	SUR-TTW-U-4-TP	ILLUMINATED THIN PROFILE ATM SURROUND	33SF
E10	ADA-EP	ADA HANDICAPPED ENTRANCE PLAQUE	.25SF
E10.1	CUST-VIN	MATCHING BLUE VINYL BACKER	
E11	ADA-EP-NA	ADA HANDICAPPED ENTRANCE PLAQUE - NOT ACCESSIBLE	.38SF



Exterior Signs

Interior Signs



CHS.NB.961 - Arlington Mass Avenue

645 Massachusetts Avenue
Arlington, MA 02476

DESIGNER - JM

CREATED - 06.17.21

DRAWING - B95122

PHILADELPHIA **SIGN**

BRINGING THE WORLD'S BRANDS TO LIFE

707 WEST SPRING GARDEN ST • PALMYRA, NJ • 08065
P: 856-829-1460 • F: 856-829-8549 • WEB: <http://www.philadelphiasign.com>

THIS IS AN ORIGINAL UNPUBLISHED DRAWING CREATED
BY P.S.C.O. IT IS SUBMITTED FOR YOUR PERSONAL USE
IN CONJUNCTION WITH A PROJECT BEING PLANNED
FOR YOU BY P.S.C.O. IT IS NOT TO BE SHOWN TO ANYONE
OUTSIDE YOUR ORGANIZATION NOR IS IT TO BE USED,
COPIED, REPRODUCED, OR EXHIBITED IN ANY FASHION.

E01 - LIF-WBO-18-LED

E02 - NMP-XX

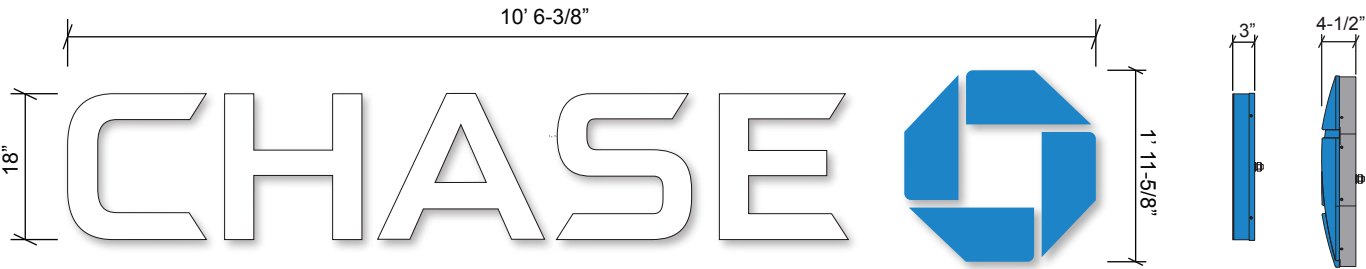
E10 - ADA-EP

E10.1 - CUST-VIN



South Elevation - Massachusetts Ave

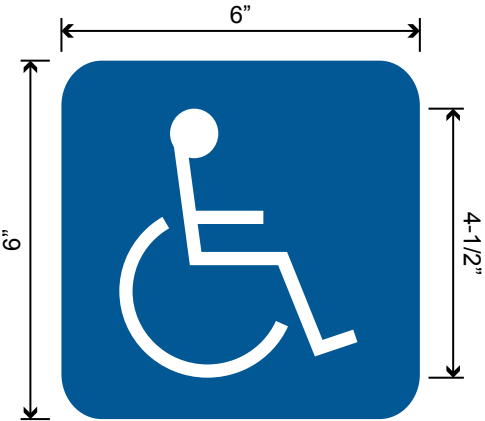
SIGN E10 NOT SEEN FROM THIS ANGLE



LIF-WBO-18-LED
WHITE W/ BLUE OCTAGON ILLUM CHANNEL LETTERS - 20.7 SF
SCALE: NTS



NMP-XX
DARK NICKEL METAL PAN - DIMENSIONS TBD
SCALE: NTS



ADA-EP
HANDICAPPED ENTRANCE PLAQUE
SCALE: NTS
CUST-VIN
MATCHING BLUE VINYL BACKER
SCALE: NTS



SIGN E10 MOUNTS BACK-TO-BACK WITH SIGN I01.

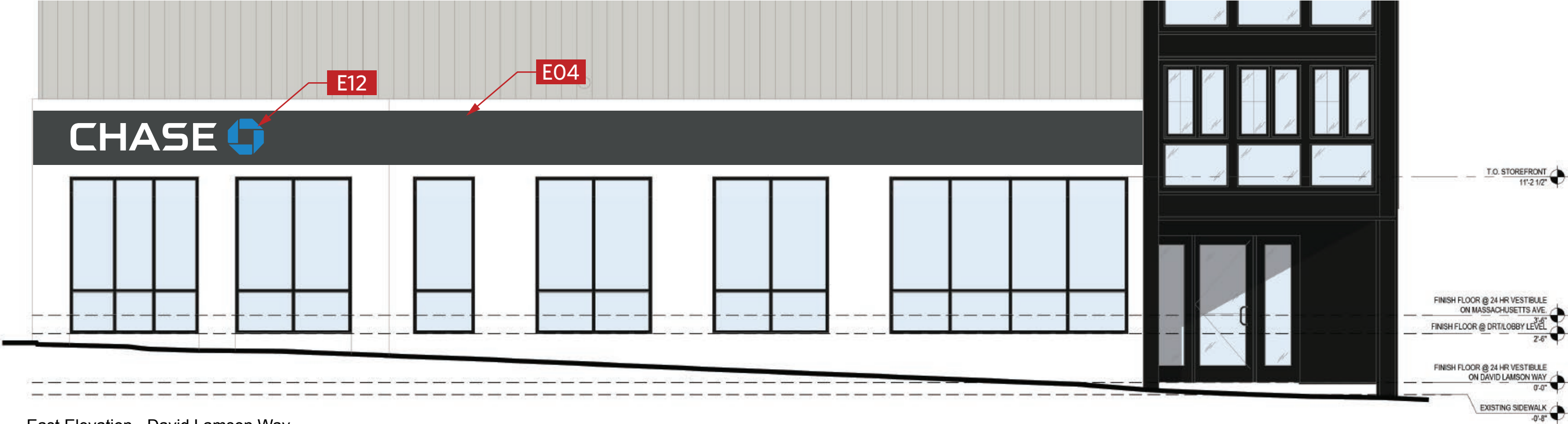


CHS.NB.961 - Arlington Mass Avenue
645 Massachusetts Avenue
Arlington, MA 02476

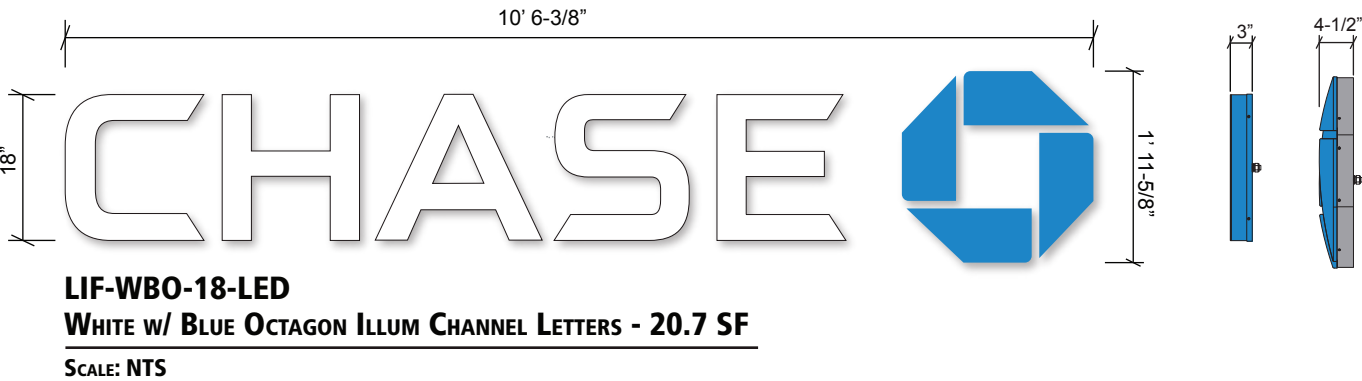
DESIGNER - JM
CREATED - 06.17.21
DRAWING - B95122

 **PHILADELPHIASIGN**
BRINGING THE WORLD'S BRANDS TO LIFE
707 WEST SPRING GARDEN ST • PALMYRA, NJ • 08065
P: 856-829-1460 • F: 856-829-8549 • WEB: <http://www.philadelphiasign.com>

THIS IS AN ORIGINAL UNPUBLISHED DRAWING CREATED BY P.S.C.O. IT IS SUBMITTED FOR YOUR PERSONAL USE IN CONJUNCTION WITH A PROJECT BEING PLANNED FOR YOU BY P.S.C.O. IT IS NOT TO BE SHOWN TO ANYONE OUTSIDE YOUR ORGANIZATION NOR IS IT TO BE USED, COPIED, REPRODUCED, OR EXHIBITED IN ANY FASHION.



East Elevation - David Lamson Way



LIF-WBO-18-LED
WHITE W/ BLUE OCTAGON ILLUM CHANNEL LETTERS - 20.7 SF
SCALE: NTS



NMP-XX
DARK NICKEL METAL PAN - DIMENSIONS TBD
SCALE: NTS

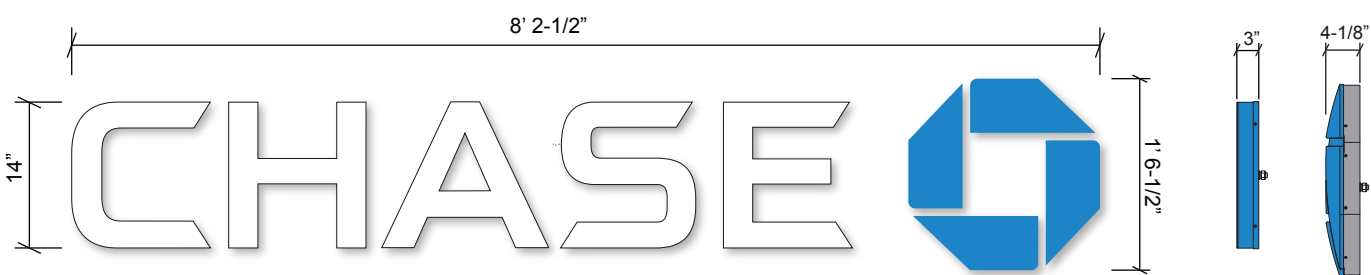
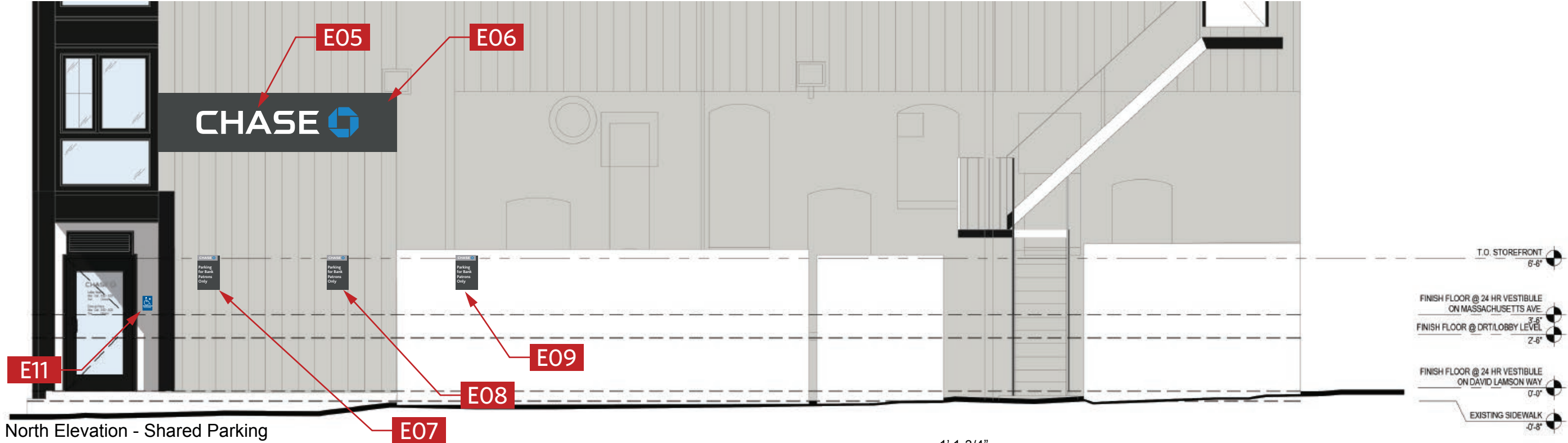


CHS.NB.961 - Arlington Mass Avenue
645 Massachusetts Avenue
Arlington, MA 02476

DESIGNER - JM
CREATED - 06.17.21
DRAWING - B95122

 **PHILADELPHIASIGN**
BRINGING THE WORLD'S BRANDS TO LIFE
707 WEST SPRING GARDEN ST • PALMYRA, NJ • 08065
P: 856-829-1460 • F: 856-829-8549 • WEB: <http://www.philadelphiasign.com>

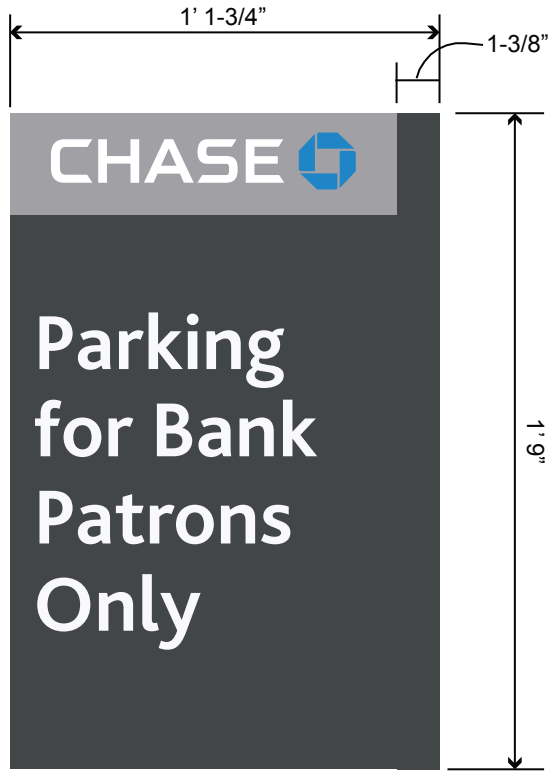
THIS IS AN ORIGINAL UNPUBLISHED DRAWING CREATED BY P.S.C.O. IT IS SUBMITTED FOR YOUR PERSONAL USE IN CONJUNCTION WITH A PROJECT BEING PLANNED FOR YOU BY P.S.C.O. IT IS NOT TO BE SHOWN TO ANYONE OUTSIDE YOUR ORGANIZATION NOR IS IT TO BE USED, COPIED, REPRODUCED, OR EXHIBITED IN ANY FASHION.



LIF-WBO-14-LED
WHITE W/ BLUE OCTAGON ILLUM CHANNEL LETTERS - 12.7 SF
SCALE: NTS



NMP-XX
DARK NICKEL METAL PAN - DIMENSIONS TBD
SCALE: NTS



TC-W-A-RE
WALL MOUNTED REGULATORY SIGN (RE-ENGINEERED) - 2SF
SCALE: NTS



ADA-EP-NA
HANDICAPPED ENTRANCE PLAQUE - NOT ACCESSIBLE
SCALE: NTS



CHS.NB.961 - Arlington Mass Avenue
645 Massachusetts Avenue
Arlington, MA 02476

DESIGNER - JM
CREATED - 06.17.21
DRAWING - B95122

 **PHILADELPHIASIGN**
BRINGING THE WORLD'S BRANDS TO LIFE
707 WEST SPRING GARDEN ST • PALMYRA, NJ • 08065
P: 856-829-1460 • F: 856-829-8549 • WEB: <http://www.philadelphiasign.com>

THIS IS AN ORIGINAL UNPUBLISHED DRAWING CREATED BY P.S.C.O. IT IS SUBMITTED FOR YOUR PERSONAL USE IN CONJUNCTION WITH A PROJECT BEING PLANNED FOR YOU BY P.S.C.O. IT IS NOT TO BE SHOWN TO ANYONE OUTSIDE YOUR ORGANIZATION NOR IS IT TO BE USED, COPIED, REPRODUCED, OR EXHIBITED IN ANY FASHION.

ARCHITECTURAL RENDERING - CORNER ELEVATION



CHS.NB.961 - Arlington Mass Avenue
645 Massachusetts Avenue
Arlington, MA 02476

DESIGNER - JM
CREATED - 06.17.21
DRAWING - B95122



PHILADELPHIASIGN

BRINGING THE WORLD'S BRANDS TO LIFE

707 WEST SPRING GARDEN ST • PALMYRA, NJ • 08065
P: 856-829-1460 • F: 856-829-8549 • WEB: <http://www.philadelphiasign.com>

THIS IS AN ORIGINAL UNPUBLISHED DRAWING CREATED BY P.S.C.O. IT IS SUBMITTED FOR YOUR PERSONAL USE IN CONJUNCTION WITH A PROJECT BEING PLANNED FOR YOU BY P.S.C.O. IT IS NOT TO BE SHOWN TO ANYONE OUTSIDE YOUR ORGANIZATION NOR IS IT TO BE USED, COPIED, REPRODUCED, OR EXHIBITED IN ANY FASHION.

ARCHITECTURAL ELEVATION - MASSACHUSETTS AVENUE



CHS.NB.961 - Arlington Mass Avenue
645 Massachusetts Avenue
Arlington, MA 02476

DESIGNER - JM
CREATED - 06.17.21
DRAWING - B95122



PHILADELPHIASIGN

BRINGING THE WORLD'S BRANDS TO LIFE

707 WEST SPRING GARDEN ST • PALMYRA, NJ • 08065
P: 856-829-1460 • F: 856-829-8549 • WEB: <http://www.philadelphiasign.com>

THIS IS AN ORIGINAL UNPUBLISHED DRAWING CREATED BY P.S.C.O. IT IS SUBMITTED FOR YOUR PERSONAL USE IN CONJUNCTION WITH A PROJECT BEING PLANNED FOR YOU BY P.S.C.O. IT IS NOT TO BE SHOWN TO ANYONE OUTSIDE YOUR ORGANIZATION NOR IS IT TO BE USED, COPIED, REPRODUCED, OR EXHIBITED IN ANY FASHION.

ARCHITECTURAL ELEVATION - DAVID LAMSON WAY ELEVATION

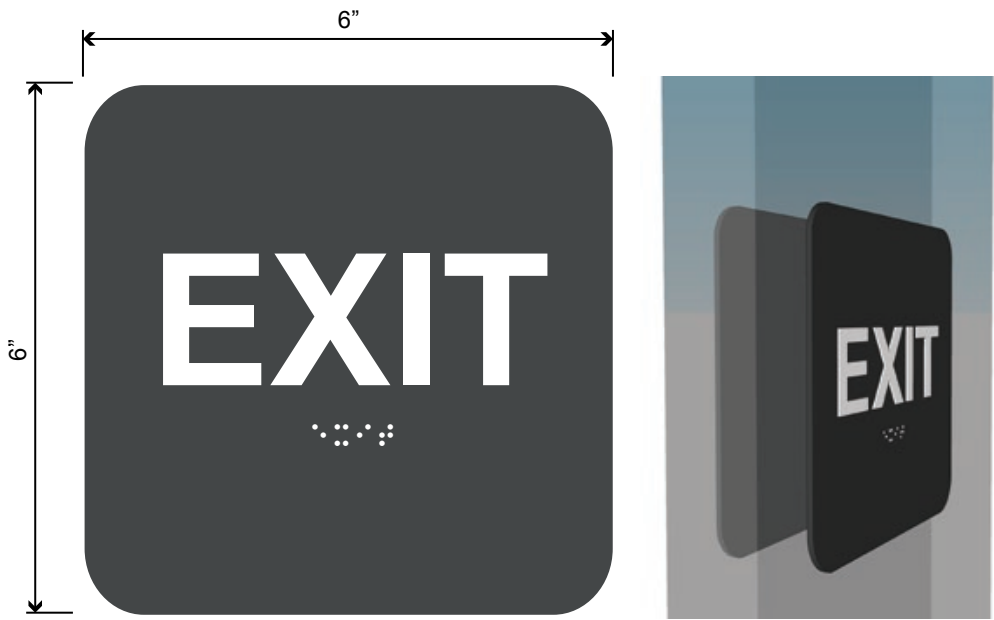


CHS.NB.961 - Arlington Mass Avenue
645 Massachusetts Avenue
Arlington, MA 02476

DESIGNER - JM
CREATED - 06.17.21
DRAWING - B95122

 **PHILADELPHIASIGN**
BRINGING THE WORLD'S BRANDS TO LIFE
707 WEST SPRING GARDEN ST • PALMYRA, NJ • 08065
P: 856-829-1460 • F: 856-829-8549 • WEB: <http://www.philadelphiasign.com>

THIS IS AN ORIGINAL UNPUBLISHED DRAWING CREATED BY P.S.C.O. IT IS SUBMITTED FOR YOUR PERSONAL USE IN CONJUNCTION WITH A PROJECT BEING PLANNED FOR YOU BY P.S.C.O. IT IS NOT TO BE SHOWN TO ANYONE OUTSIDE YOUR ORGANIZATION NOR IS IT TO BE USED, COPIED, REPRODUCED, OR EXHIBITED IN ANY FASHION.



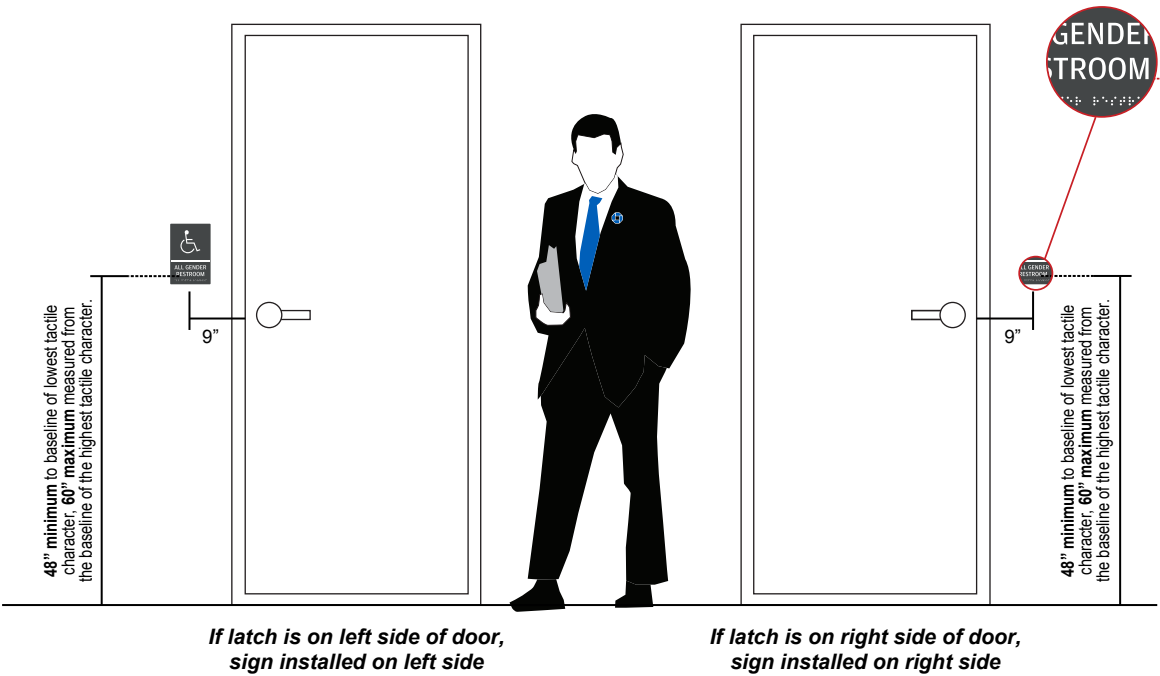
ADA-EX
HANDICAPPED EXIT PLAQUE
SCALE: NTS

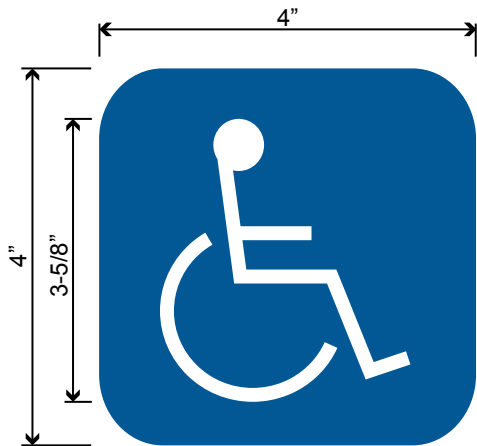
**SIGN I01 MOUNTS
BACK-TO-BACK WITH
SIGN E10.**

CUST-VIN
MATCHING BRONZE VINYL BACKER
SCALE: NTS

ADA-RRAG-A-G All Gender Neutral Restroom Signage
for Restrooms that **ARE** Accessible

- Tactile sign identifying an accessible restroom entrance.
- Mounted on the wall, next to the door, on the latch side of the door.
- Acrylic tactile signs designed to meet Federal ADA 2010 ADAAG standards.

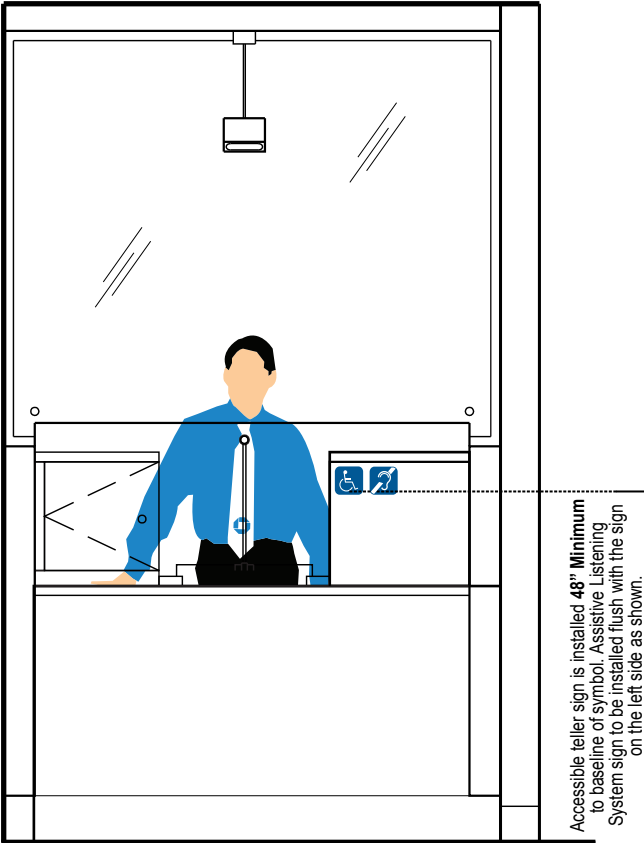




ADA-TW
ADA TELLER WALL SIGN
SCALE: NTS



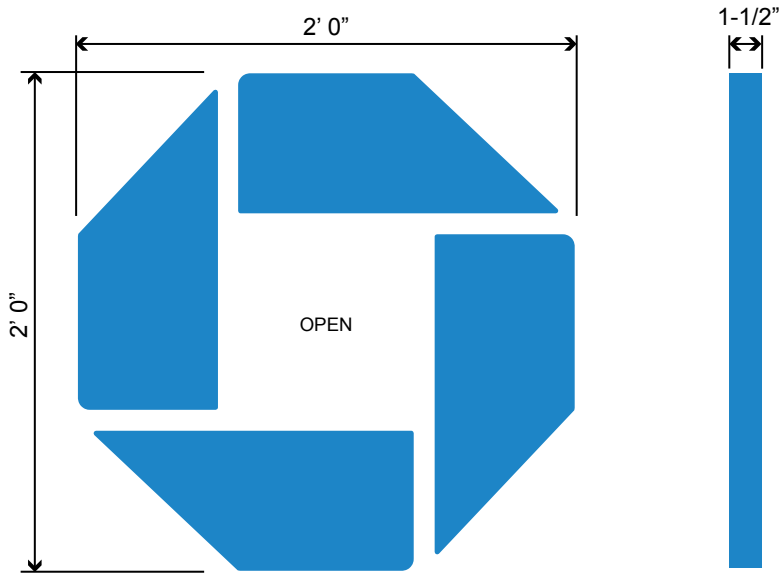
ADA-TW-ALS
ADA TELLER WALL SIGN - ASSISTIVE LISTENING SYSTEM
SCALE: NTS



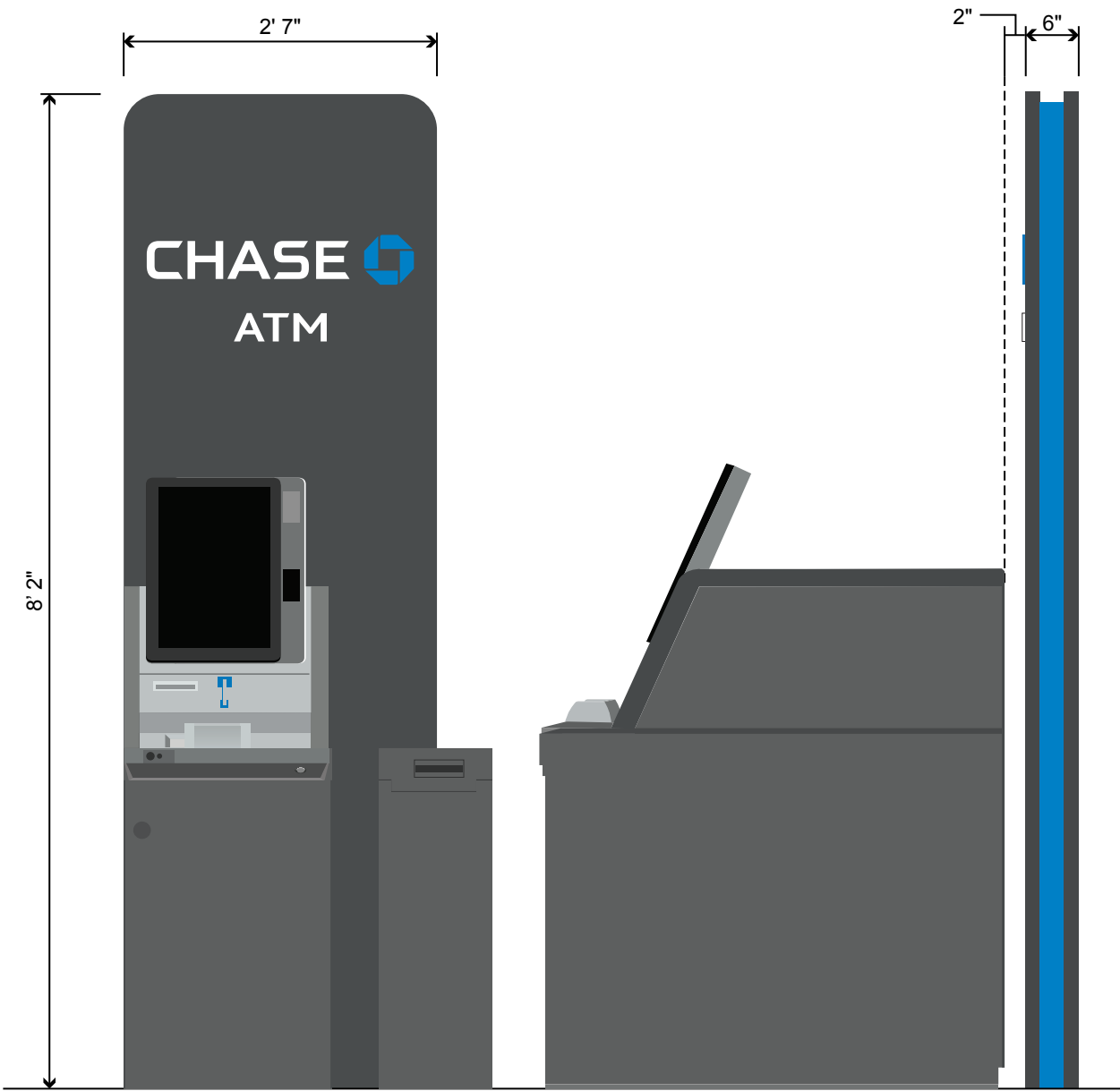
**Placement at Modular Teller Stations
with Bullet-Resistant Glass**



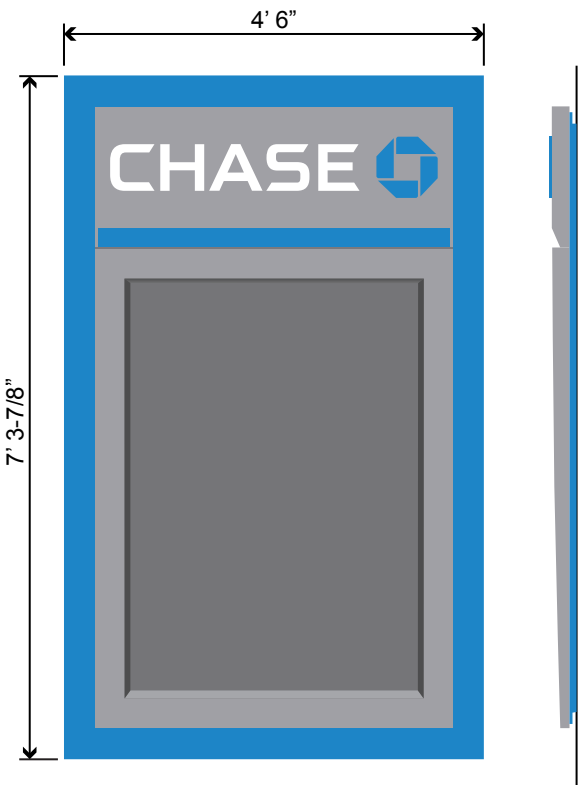
For Reference Only



TPL-BTR-B-24
24" THIN PROFILE ILLUMINATED INTERIOR BLUE OCTAGON - 4SF
SCALE: NTS
NOTE: Octagon to be Purchased from Bitro.



eATM-PANEL-SINGLE-SIDE-CAR
BRANDING PANEL FOR SINGLE SIDE CARE eATM 3.0
SCALE: NTS



SUR-TTW-U-4-TP
THIN PROFILE ATM SURROUND - 33SF
SCALE: NTS



CHS.NB.961 - Arlington Mass Avenue
645 Massachusetts Avenue
Arlington, MA 02476

DESIGNER - JM
CREATED - 06.17.21
DRAWING - B95122



PHILADELPHIASIGN

BRINGING THE WORLD'S BRANDS TO LIFE

707 WEST SPRING GARDEN ST • PALMYRA, NJ • 08065
P: 856-829-1460 • F: 856-829-8549 • WEB: <http://www.philadelphiasign.com>

THIS IS AN ORIGINAL UNPUBLISHED DRAWING CREATED BY P.S.C.O. IT IS SUBMITTED FOR YOUR PERSONAL USE IN CONJUNCTION WITH A PROJECT BEING PLANNED FOR YOU BY P.S.C.O. IT IS NOT TO BE SHOWN TO ANYONE OUTSIDE YOUR ORGANIZATION NOR IS IT TO BE USED, COPIED, REPRODUCED, OR EXHIBITED IN ANY FASHION.

Survey Photos



CHS.NB.961 - Arlington Mass Avenue
645 Massachusetts Avenue
Arlington, MA 02476

DESIGNER - JM
CREATED - 06.17.21
DRAWING - B95122



PHILADELPHIASIGN
BRINGING THE WORLD'S BRANDS TO LIFE
707 WEST SPRING GARDEN ST • PALMYRA, NJ • 08065
P: 856-829-1460 • F: 856-829-8549 • WEB: <http://www.philadelphiasign.com>

THIS IS AN ORIGINAL UNPUBLISHED DRAWING CREATED BY P.S.C.O. IT IS SUBMITTED FOR YOUR PERSONAL USE IN CONJUNCTION WITH A PROJECT BEING PLANNED FOR YOU BY P.S.C.O. IT IS NOT TO BE SHOWN TO ANYONE OUTSIDE YOUR ORGANIZATION NOR IS IT TO BE USED, COPIED, REPRODUCED, OR EXHIBITED IN ANY FASHION.

Approach Photos



CHS.NB.961 - Arlington Mass Avenue
645 Massachusetts Avenue
Arlington, MA 02476

DESIGNER - JM
CREATED - 06.17.21
DRAWING - B95122



PHILADELPHIASIGN

BRINGING THE WORLD'S BRANDS TO LIFE

707 WEST SPRING GARDEN ST • PALMYRA, NJ • 08065
P: 856-829-1460 • F: 856-829-8549 • WEB: <http://www.philadelphiasign.com>

THIS IS AN ORIGINAL UNPUBLISHED DRAWING CREATED BY P.S.C.O. IT IS SUBMITTED FOR YOUR PERSONAL USE IN CONJUNCTION WITH A PROJECT BEING PLANNED FOR YOU BY P.S.C.O. IT IS NOT TO BE SHOWN TO ANYONE OUTSIDE YOUR ORGANIZATION NOR IS IT TO BE USED, COPIED, REPRODUCED, OR EXHIBITED IN ANY FASHION.

Code Allowances - Completed by Sign Vendor	
General Info	
Zoning Designation	B-5, Central Business
Temporary Signs	
Is the 8' x 4' Coming Soon Ground Sign Allowed? If so, how many?	Downtown location not suitable for F/S signs
Are temporary banners allowed? If so, for how long?	n/a
Are fly guys allowed? If so, for how long?	n/a
Primary Ground Sign	
Will code allow our standard pylon or monument? If yes, which one (ex: P-100, P-75, M-50, M-25, refer to reference guide for all standard options). Is more than 1 primary ground sign allowed?	Downtown location not suitable for F/S signs
If not, what are the pylon / monument restrictions? (include illumination restrictions/overall allowable sf / custom design requirements)	n/a
List the set back requirements.	n/a
Building Sign	
Prototypical FS branch - Will code allow our standard illuminated bldg. sign package (30" letterset on front & sides, 24" letterset on the rear)? Please list size and locations of signs allowed.	1 sign per street, no SF limitations; no flashing/blinking
If not, what are the variables/restrictions (include illumination and sf restrictions, as well as custom sign requirements)?	n/a
In-line / Urban branch - what are the exterior wall sign restrictions (sign type, including max. sf and illumination).	n/a
Interior Window Signs- List all interior window signs restrictions, including storefront set back requirements.	25% window area
ATM Topper- does this count against our overall allowable sf.? Is illumination allowed?	ATM signs subject to review and approval
Are decorative logos allowed (EFIS octagon)? Does it count against overall SF?	n/a
Directional / Regulatory Signs	
Is our standard directional and regulatory sign package allowed?	Downtown location not suitable for F/S signs
If not, what are the variables/restrictions?	n/a
Awnings / ATM Sunscreens	
Are branded awnings allowed?	yes
What if any restrictions are there (Illumination, color/materials, min & max projection)?	8' clearance, no SF limitation, see add'l comments
Are ATM sunscreens allowed? Do they count against overall SF?	ATM signs subject to review and approval
Other Governing Agencies	
Identify other governing agencies that could override code (ARB, HRB, PUD, etc) and list the known restrictions.	ALL SIGNS TO BE REVIEWD AND APPROVED BY the ARLINGTON HISTORICAL COMMISSION
Permitting / Variance Process	
What is the application process and timing for variance approval ? What are the variance application fees?	2-3 months
What is the likelihood of being granted a variance with this municipality?	25%
Architectural Lighting	
Is Architectural lighting allowed? Does it count against overall SF? List provisions.	no flashing/blinking. NO SIGNS TO BE ILLUMINATED FROM 12am - 6am
Additional Comments	
Please list any additional comments	Permitted 2 of the following categories of signs: wall sign, window sign, awning sign