

DRAFT

# Mass Ave/Appleton Street Safety + Accessibility Corridor Project

Draft Final Concept at the Selectboard

February 27, 2023



# MEETING AGENDA



**PROJECT OVERVIEW  
+ GOALS**



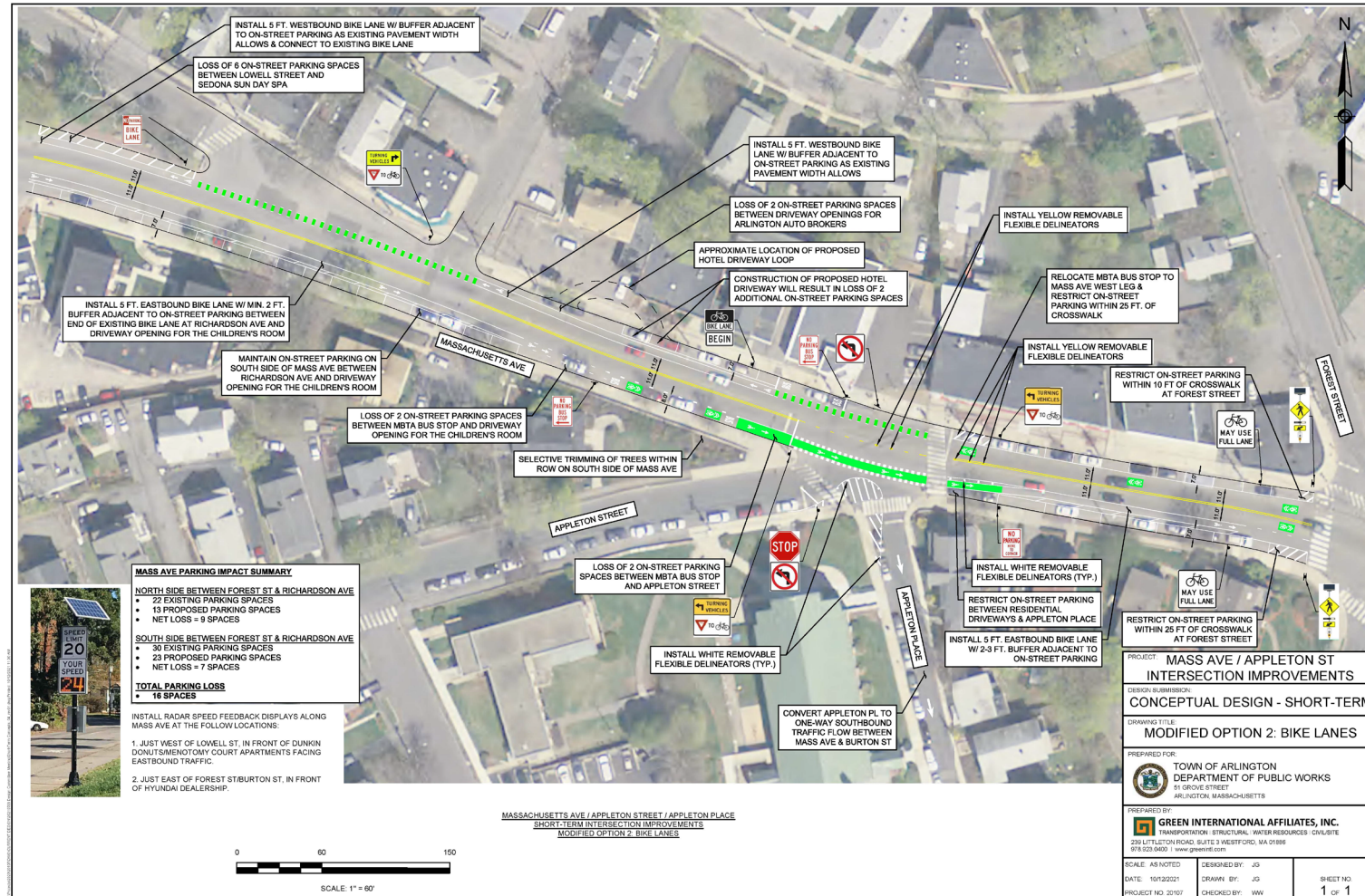
**DRAFT FINAL  
CONCEPT**



**PARKING STUDY +  
IMPACT**



# SHORT TERM IMPROVEMENTS



# PROJECT SCOPE



The Mass Ave/Appleton Street Safety + Accessibility Corridor Study will look at the intersection in context of a greater study area

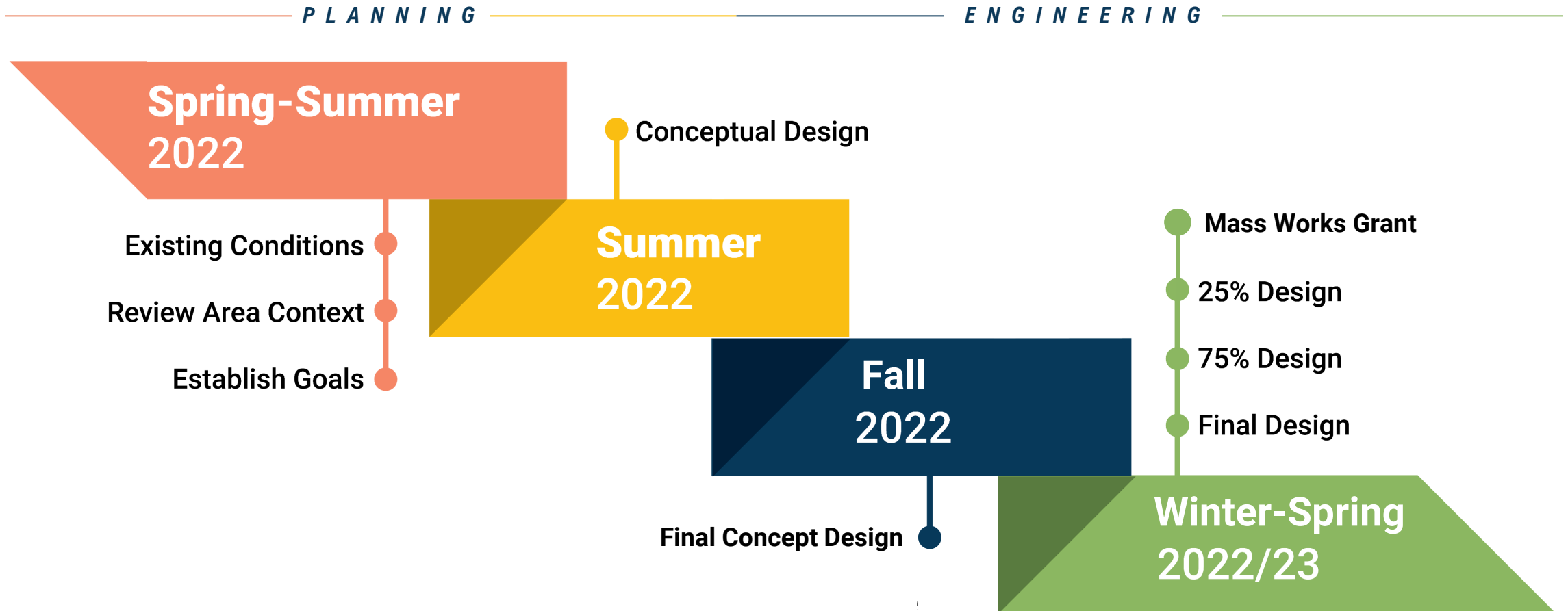




# PROJECT CORRIDOR



# STUDY PROCESS





# PROJECT GOALS

## SAFE FOR ALL

### PROTECT ALL ROADWAY USERS

- **Reduce vehicle speeds** along the corridor
- **Increase visibility** at intersections
- Prioritize **safe travel for all ages**
- **Simplify navigation**

## MAKE THIS A “PLACE”

### INTEGRATE CORRIDOR WITH LOCAL AMENITIES

- **Foster a sense of place** along Mass Ave
- **Support connections** between the neighborhood and the Minuteman Bikeway
- Position the neighborhood as **reachable by foot, bike, or bus for local residents and visitors from elsewhere**

## PROVIDE FOR LOCAL ACCESS

### SUPPORT CORRIDOR ACTIVITY + GROWTH

- **Create dedicated, accessible space** for all people, regardless of mode choice
- **Maintain access** for customers + loading activities
- **Work collaboratively** with residents, business owners, + other stakeholders
- Allow user groups to **meet their individual travel needs** (school, church, neighborhood access, etc.)

## BE RESILIENT

### ENCOURAGE RESILIENCY THROUGH DESIGN

- **Reduce conflict risk between bicyclists and other users** through progressive design
- **Position transit competitively** with driving
- **Accommodate walking** by understanding where pedestrians want to go
- Utilize **green infrastructure** for enhanced place making where able



# USER CORRIDOR EXPERIENCE

Corridor is disjointed from broader Mass Ave experience



MASS AVENUE/APPLETON STREET SAFETY AND ACCESSIBILITY PROJECT



# CHALLENGES

Understanding the challenges the Study Area faces as an **activity center**, and the opportunity to **protect users, support activity and growth, integrate with local amenities, and encourage positive culture**, concept development pushed the design to support the goals and vision for the corridor.





# REPURPOSE SIDEWALK SPACE



*Conceptual Rendering of sidewalk*

- Create a **separated bicycle facility**
- **Retain parking on north curb** for local businesses
- **Create left-turn lanes**
- **Retain** street trees where possible



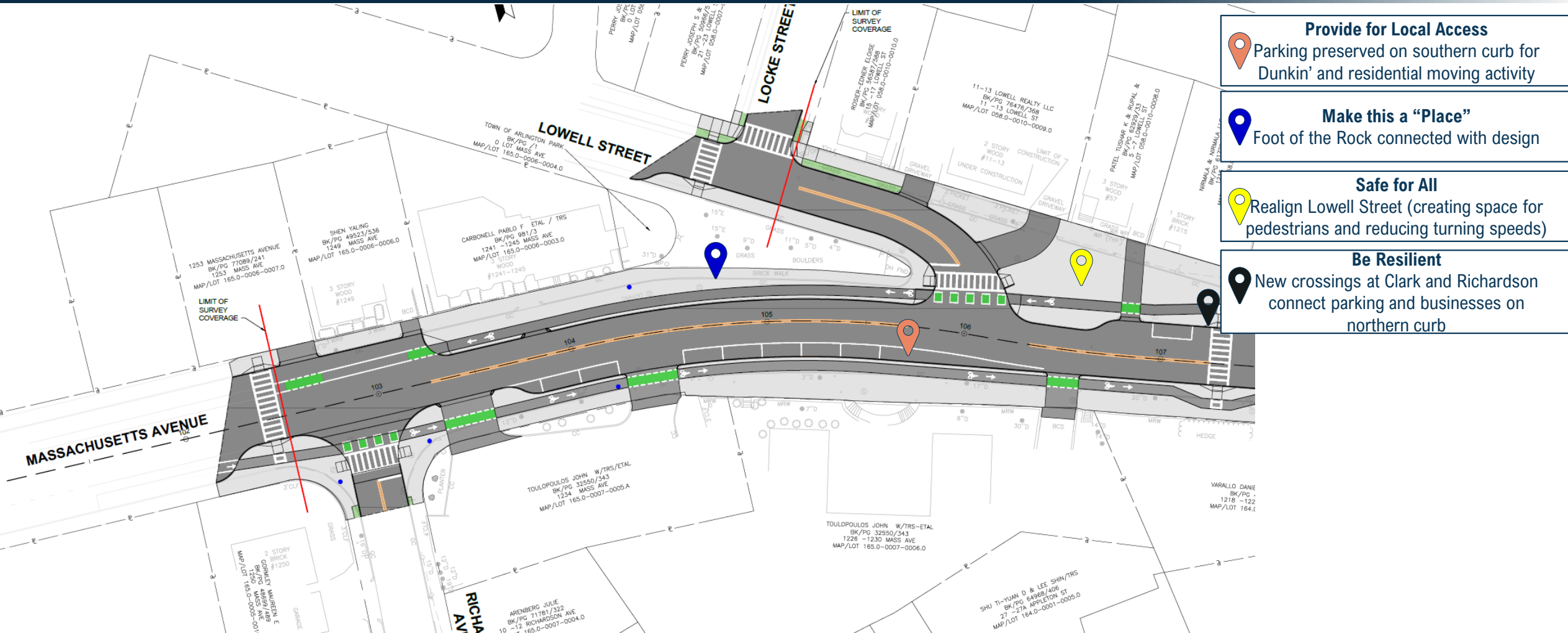


# PRESERVE IMPORTANT PARKING

*Parking retention based on observations from public meeting and parking study.*

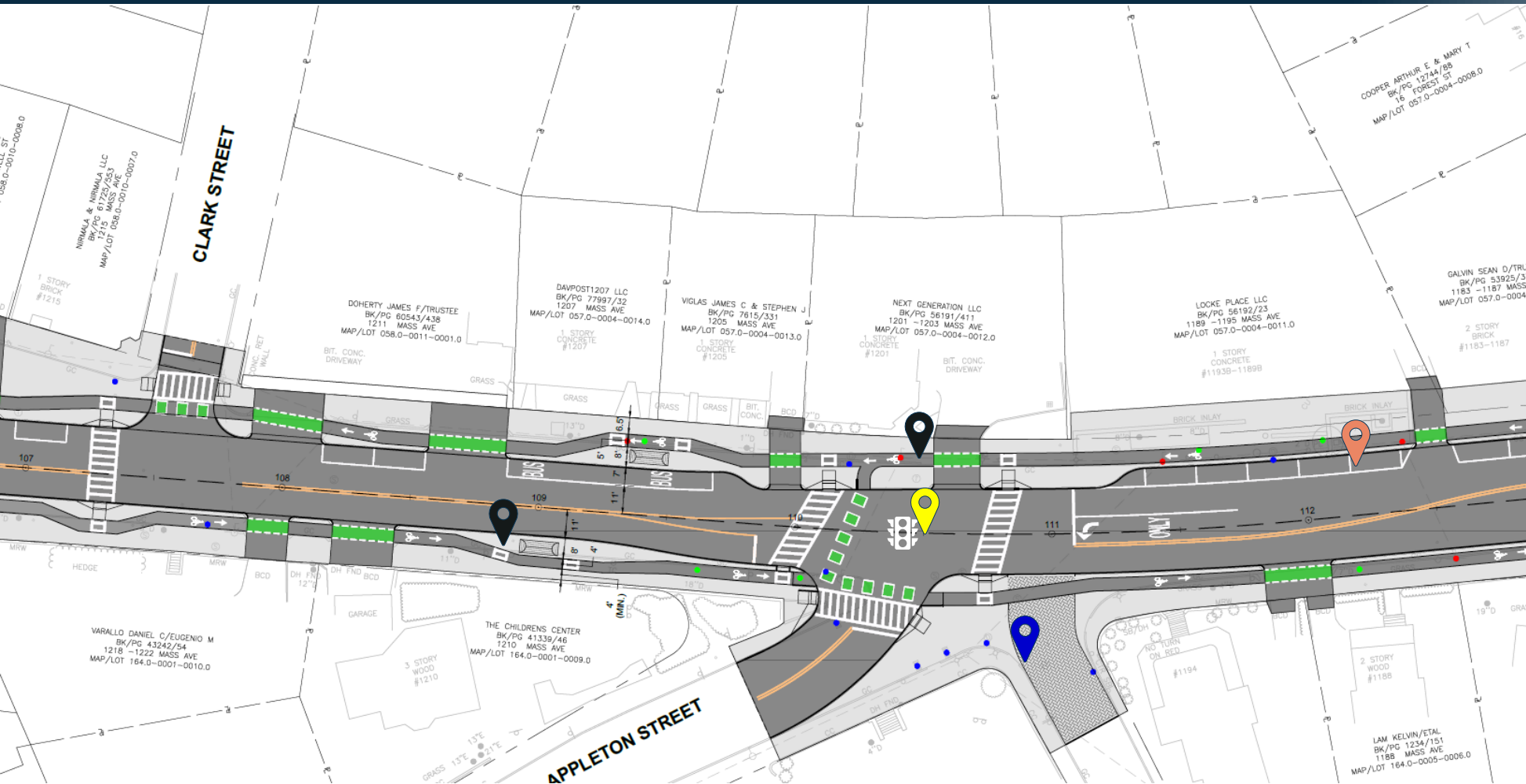


# FINAL CONCEPT





# FINAL CONCEPT



## Be Resilient

- Bus stop designed in accordance with MassDOT + MBTA guidance



*Somerville Avenue in Union Square*  
Bus every 5 minutes in peak hour

- Make this a “Place” + Be Resilient
- Plaza while preserving emergency access

## Safe for All

- Traffic Signal to simplify intersection

## Provide for Local Access

- All parking on northern side of Mass Ave between Forest and Appleton preserved, informed by business discussions and parking study

## Be Resilient

- Protected Bicycle Lanes and crossings



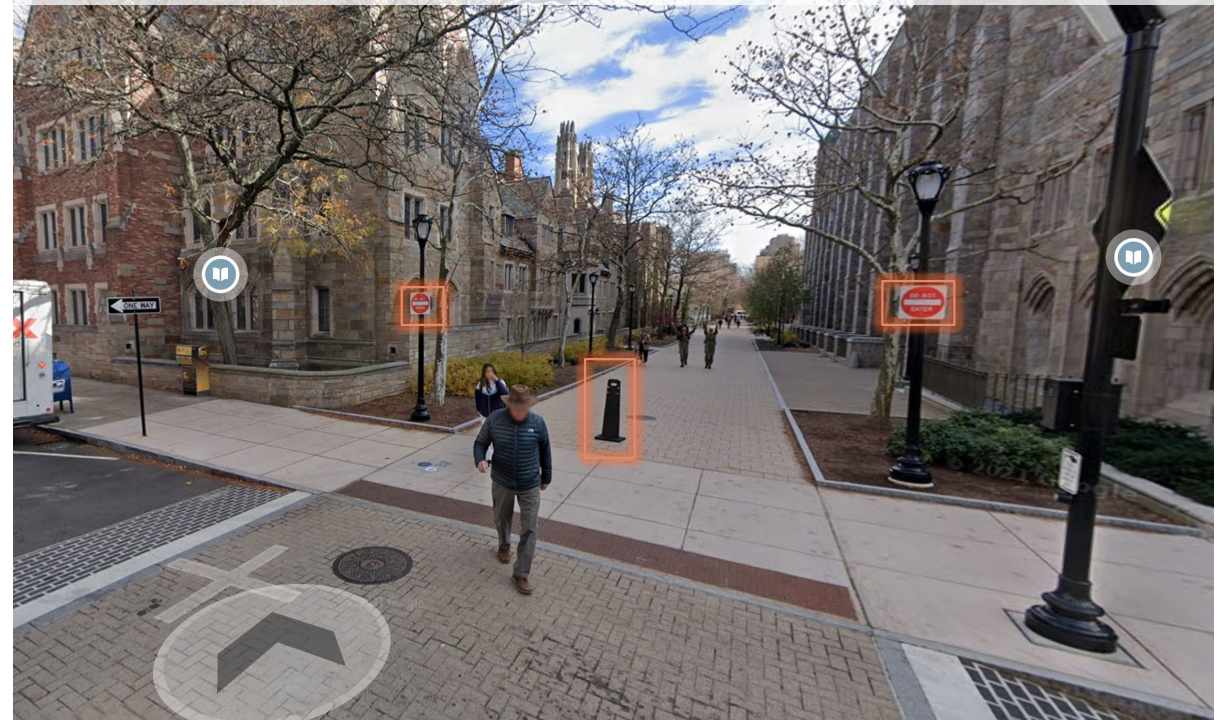


# MOUNTABLE CURB FOR EMERG. ACCESS <sup>DRAFT</sup>

MIT Infinite Corridor at Mass Ave (Cambridge, MA - concrete + Do Not Enter signage)

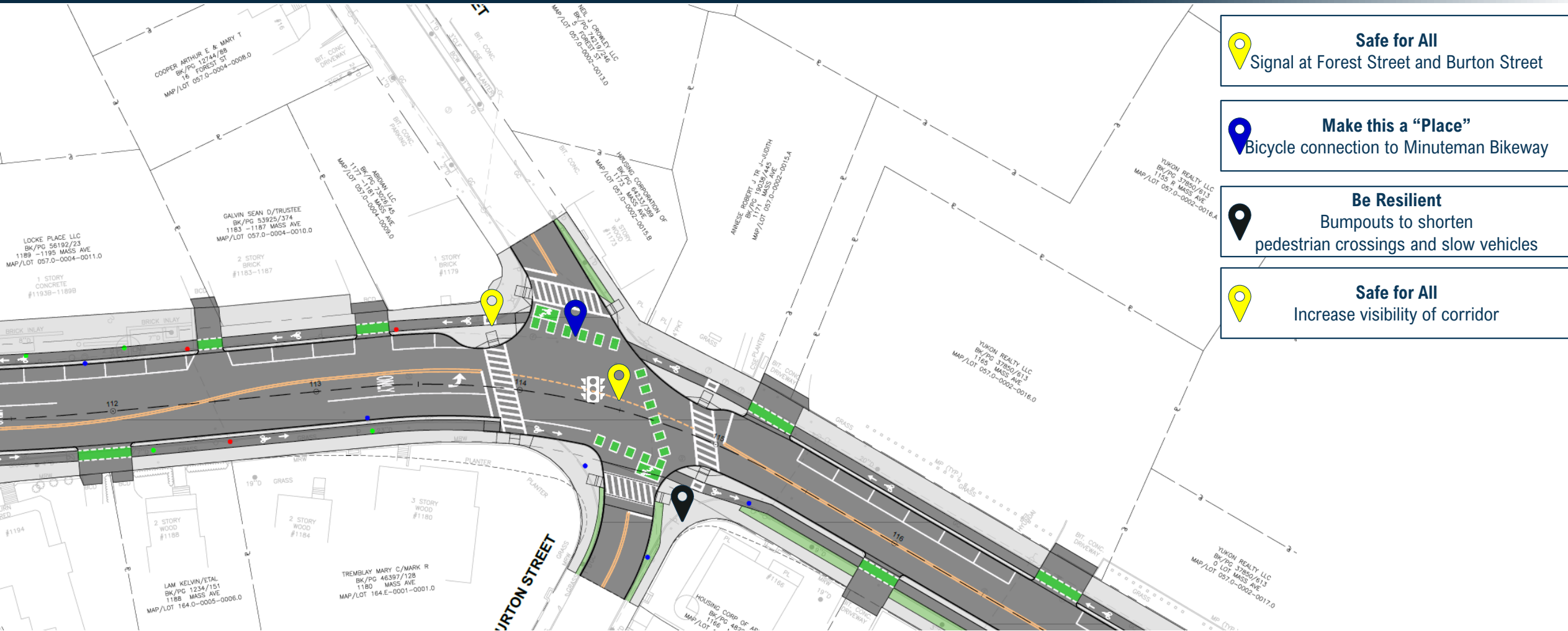


Alexander Walk (New Haven, CT - concrete + Do Not Enter signage + movable cone)

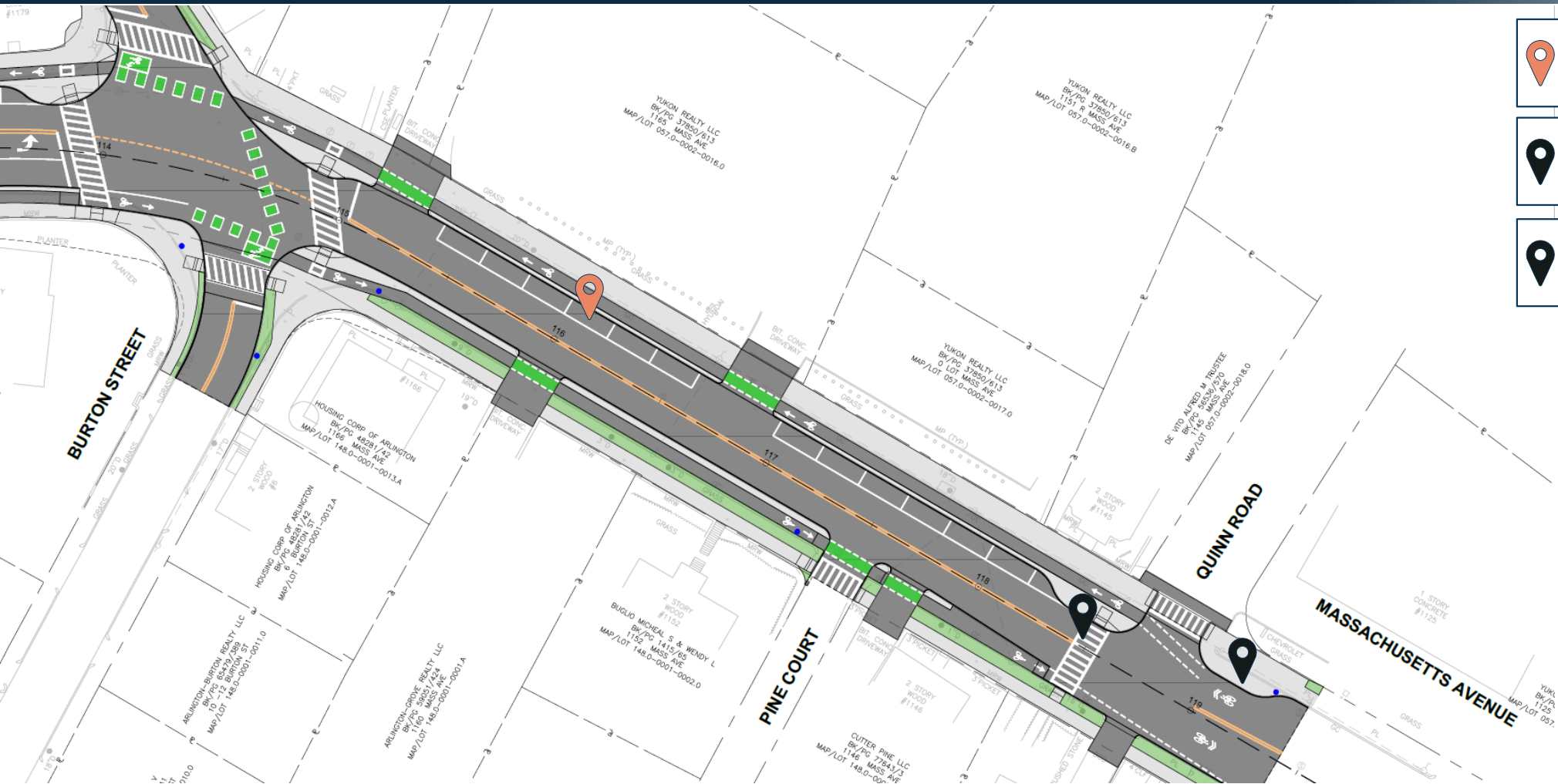




# FINAL CONCEPT



# FINAL CONCEPT



**Provide for Local Access**  
Preserve Parking



**Be Resilient**  
New crosswalk at Quinn Road



**Be Resilient**  
Bumpouts to shorten  
pedestrian crossings and slow vehicles





# STUDY PROCESS

