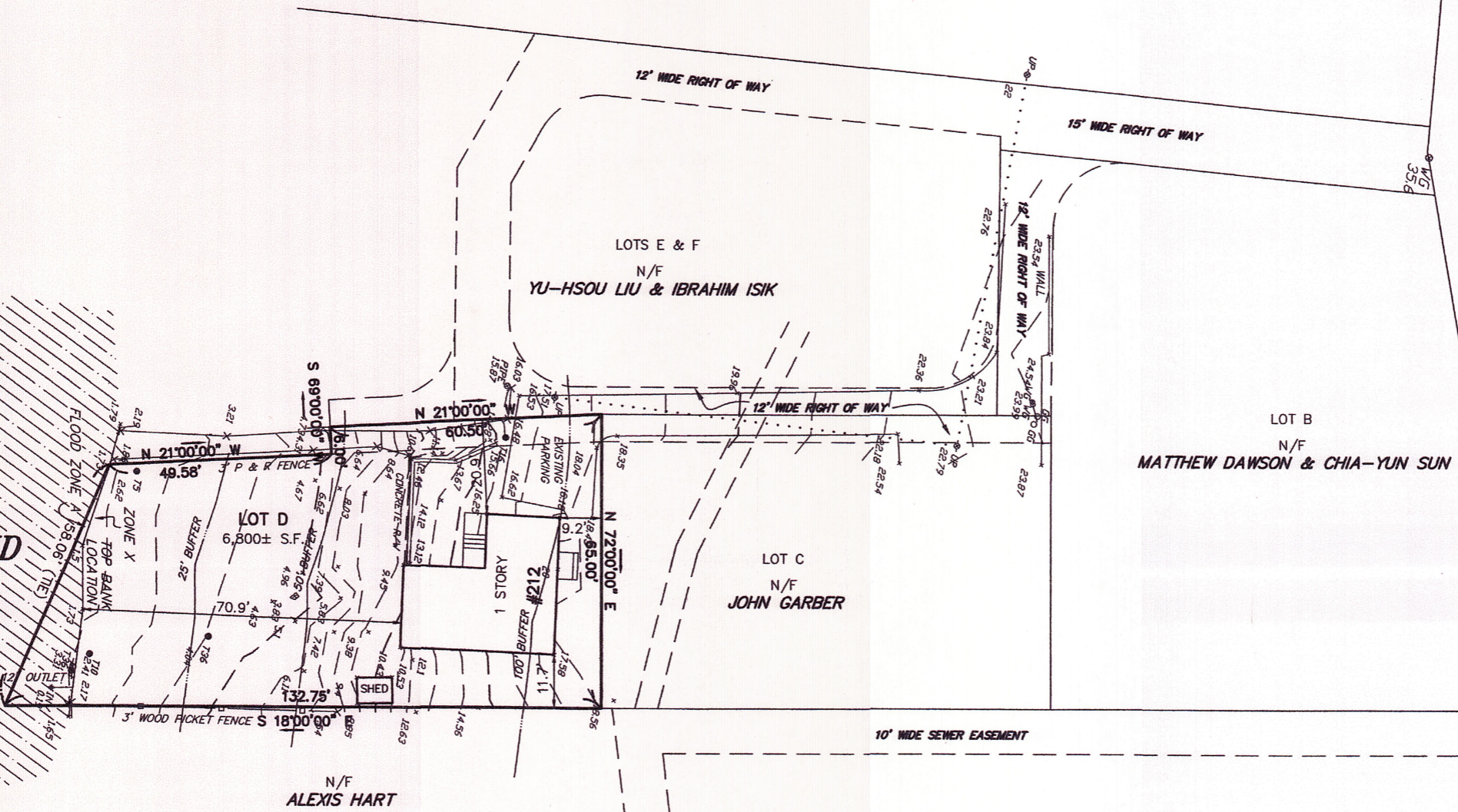




SPY POND

PLEASANT STREET



AVERAGE GRADE
 $(16.25+18.18)/2 = 17.22$
 $(18.18+17.58)/2 = 17.88$
 $(17.58+10.43)/2 = 14.0$
 $(10.43+9.45)/2 = 9.94$
 $(13.12+16.25)/2 = 14.69$
 $(17.22+17.88+14.0+9.94+14.69)/5 = 14.75$
 $(17.22+17.88+14.0+9.94+14.69)/5 = 14.75$
 BASEMENT CEILING = 19
 AVERAGE GRADE = 14.75

NOTE: UP = UTILITY POLE



PREPARED FOR: MARK HALLIDAY

CONSERVATION PLAN
 IN
ARLINGTON, MA
 (MIDDLESEX COUNTY)
 SCALE: 1" = 20' DATE: JANUARY 12, 2022

ROBER SURVEY
 1072A MASSACHUSETTS AVENUE
 ARLINGTON, MA 02476
 (781) 648-5533
 6645PP1.DWG