

## MATERIALS AND PRODUCTS

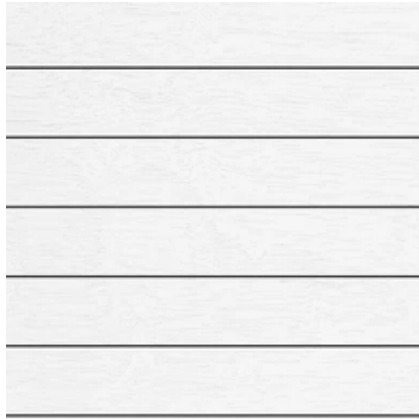
August 7, 2024

for

## MULTI-FAMILY HOUSING AS OF RIGHT DEVELOPMENT

at

5-7 Belknap Street in Arlington, Massachusetts



(A) Off-white lap siding,  
LP Smart Side (or equal)



(B) Cedar-look nickel gap siding,  
LP Smart Side (or equal)



Color example

### Façade materials/information:

Siding (A) – horizontal lap, 4” white

Siding – horizontal or vertical nickel gap, 4” dark gray

Siding – horizontal or vertical nickel gap, 8” white

Siding (B) – horizontal or vertical nickel gap, 4” cedar-look

Trim – 1.5” white (windows, doors, etc.)

Trim – 3.5” white (corners)

Flashing – metal, dark gray

No gutters – scuppers from roof & downspouts

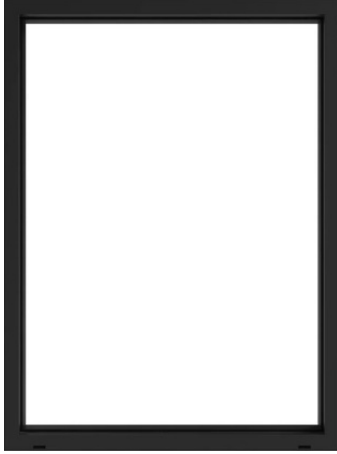
Downspouts – painted to match siding



Decking – Trex (or sim.), gray



Decking example



Casement & fixed windows

Windows & Doors – Marvin Elevate Series (or similar), black frames

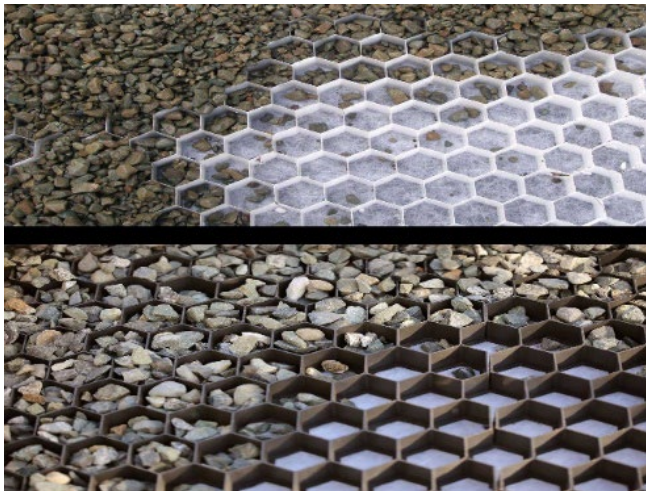


Exterior recessed can lighting

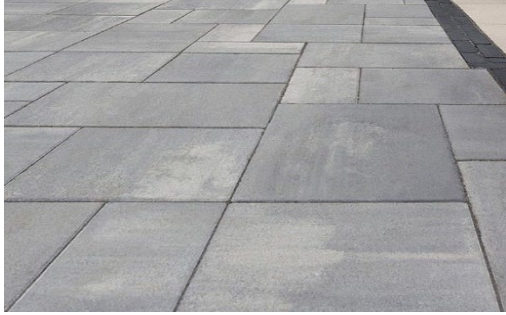
Soffit – pine/painted wood (or sim.)



Landscape steel edging



Permeable driveway parking grid, Peastone (or sim.)



Pavers – Unilock Beacon Hill XL (or sim.)



Pavers – Unilock Beacon Hill XL (or sim.)

Decorative Stone – left side of house (see Landscape drawings)

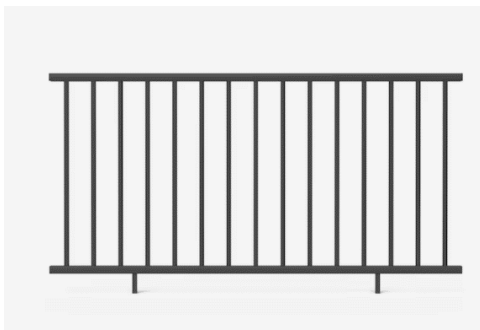


Roof Pavers – example wood color, 12"x12" (or sim.)

Roof Pavers System – TileTech w/ leveling pedestals (or sim)



Handrail/guardrails @ porches, courtyard, & balconies:  
dark metal posts and handrails with horizontal cable rail (or sim)



Handrail/guardrail @ roof:  
dark metal posts and handrails with vertical dark metal balusters (or sim)