

1513 MASS AVE

Arlington, MA, 02476

ARB EDR APPLICATION

Summary

2 stories
5 residential units
(5x 2 Bed Units)
1 Commercial unit
5 Arlington parking spaces
8 Bike spaces
0.74 FAR

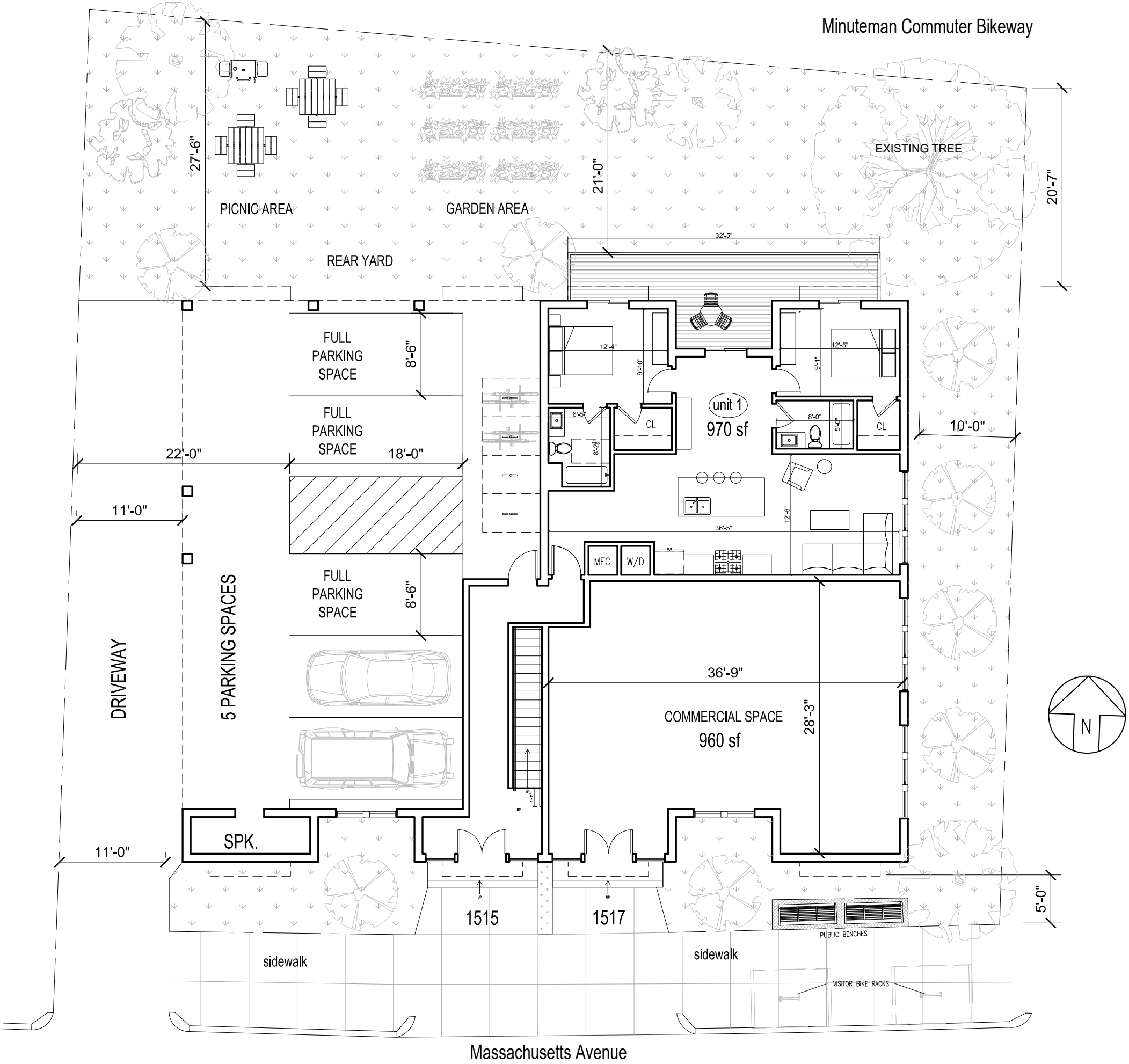


context
a collaborative design workshop

EXISTING CONDITIONS (VIEWS FROM MASS AVE)

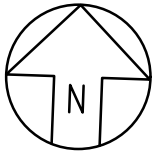
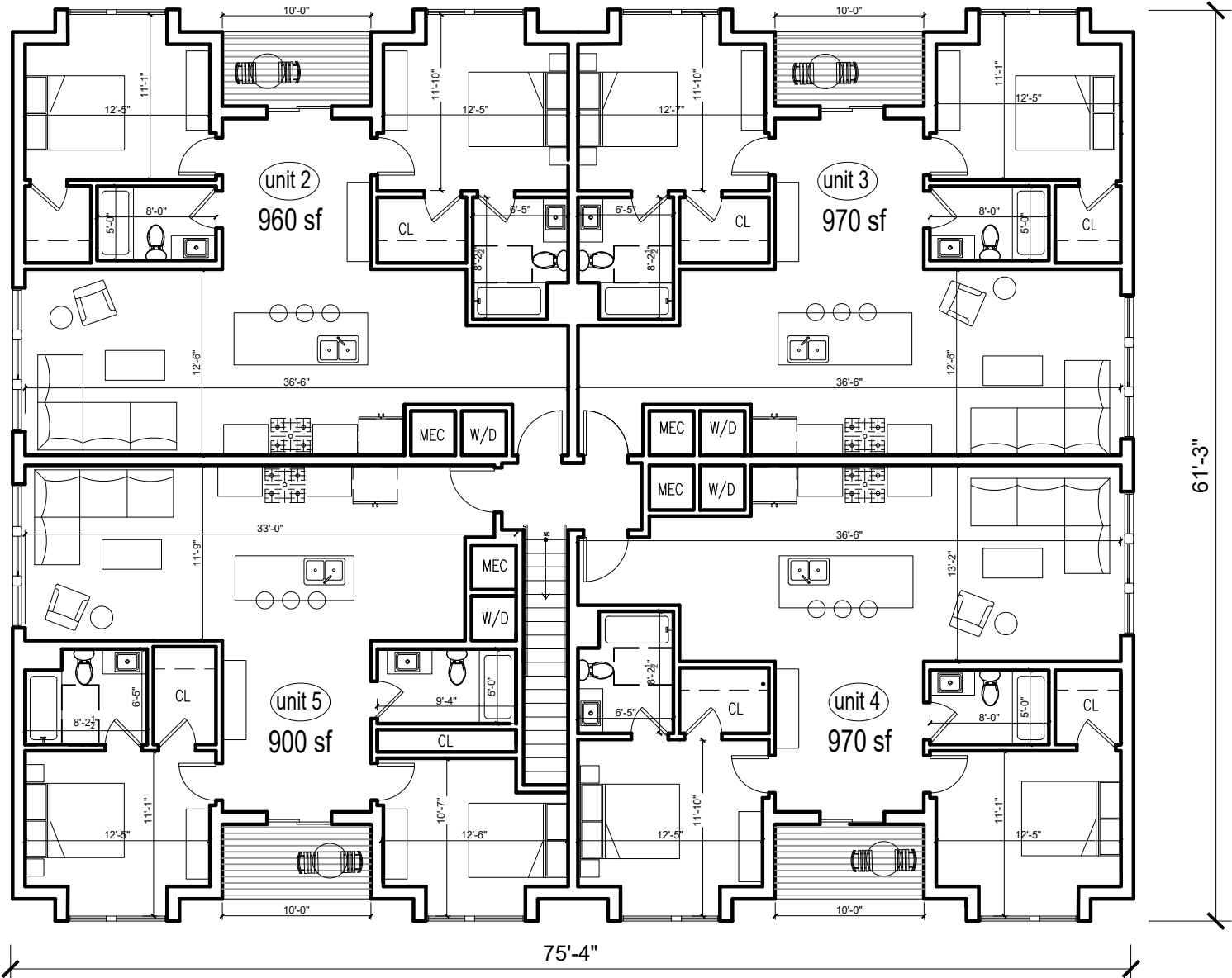


SITE PLAN



LEVEL 2 PLAN

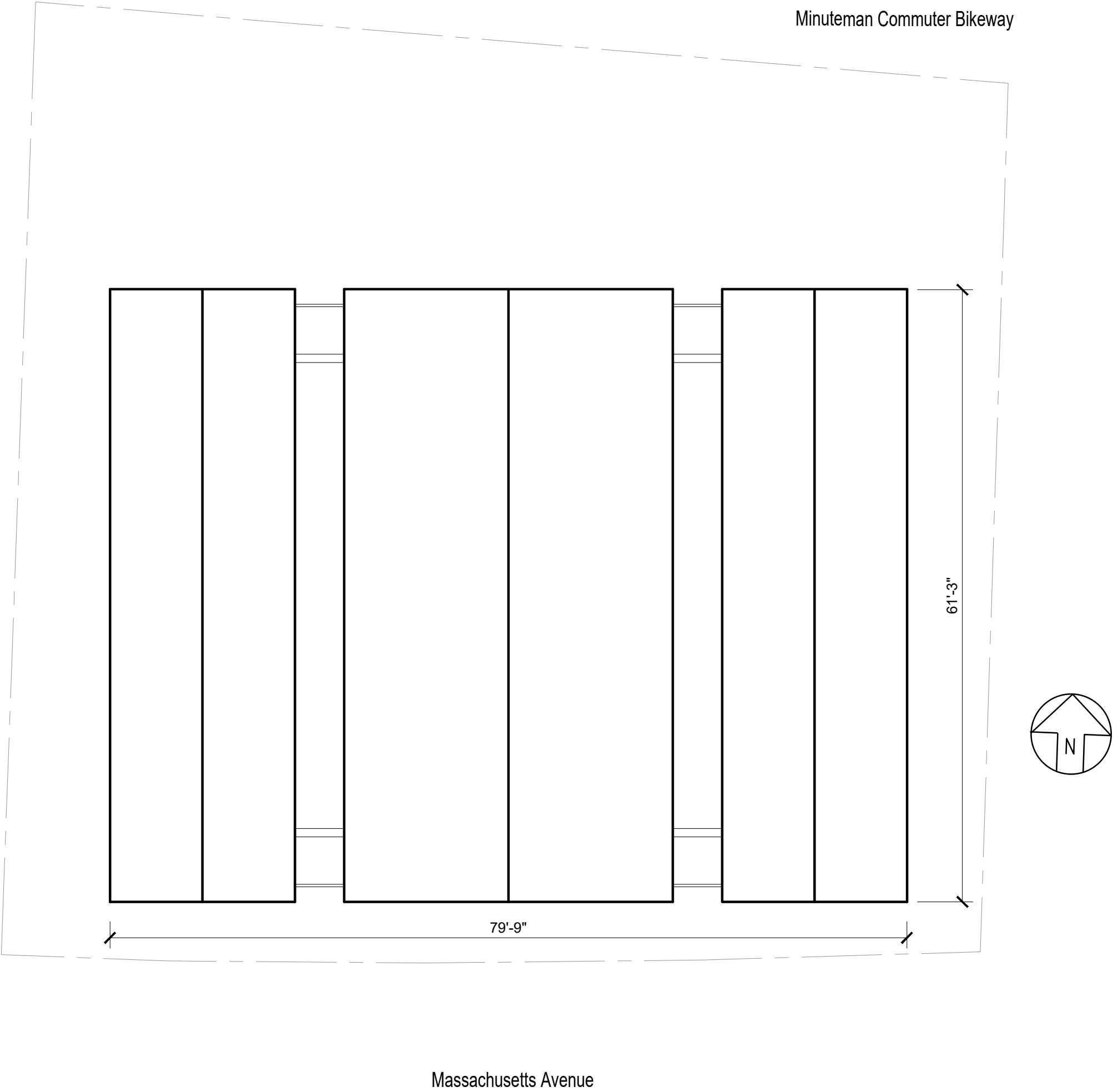
Minuteman Commuter Bikeway



Massachusetts Avenue



ROOF VIEW



ELEVATIONS



PROPOSED FRONT ELEVATION



PROPOSED REAR ELEVATION

ELEVATIONS



PROPOSED RIGHT SIDE ELEVATION

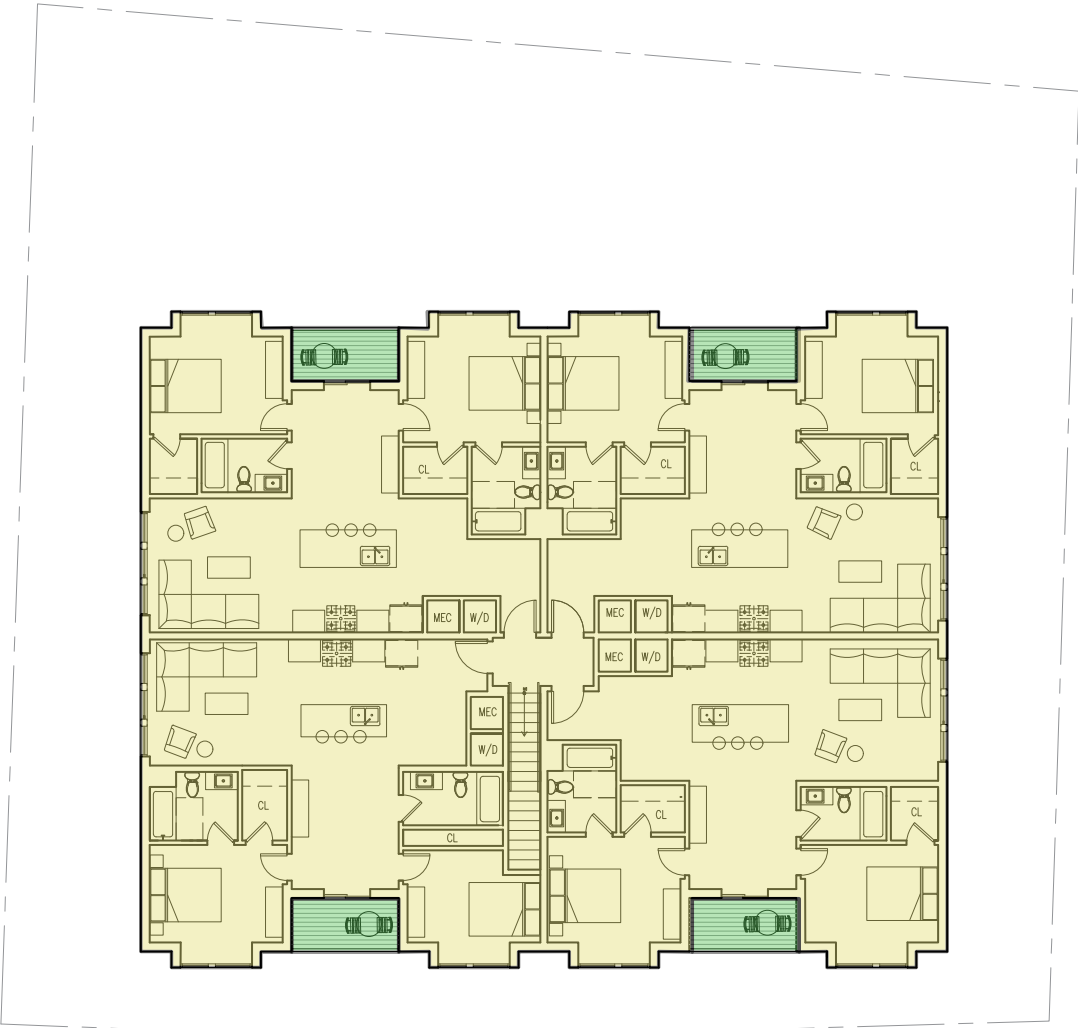


PROPOSED LEFT SIDE ELEVATION

LANDSCAPED VS BUILT AREA
TOTAL AREA 8970SF



GROUND FLOOR

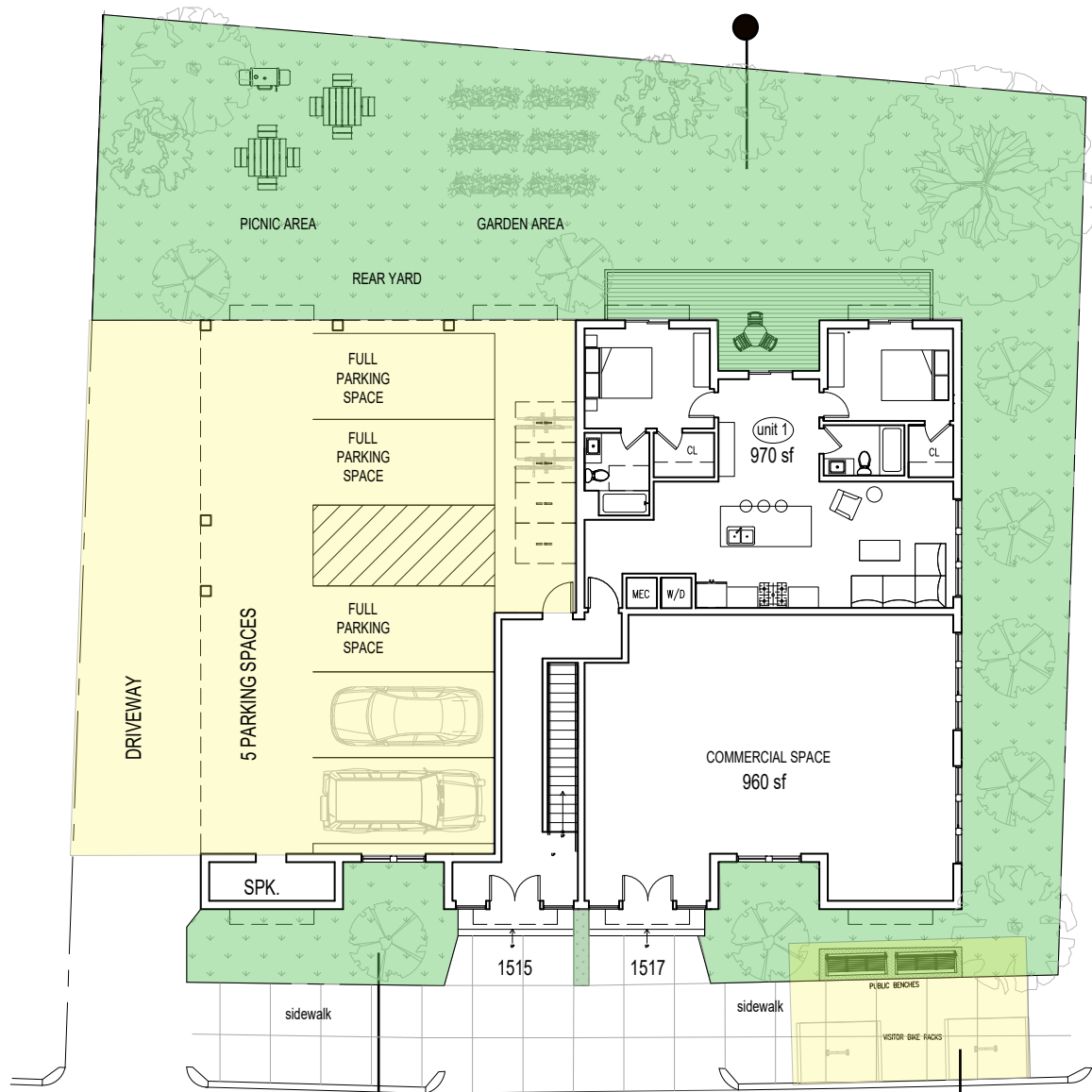


SECOND FLOOR



PUBLIC REALM INTERFACE

REAR SETBACK: Shields the building from the Bikepath and the Bikepath from the building

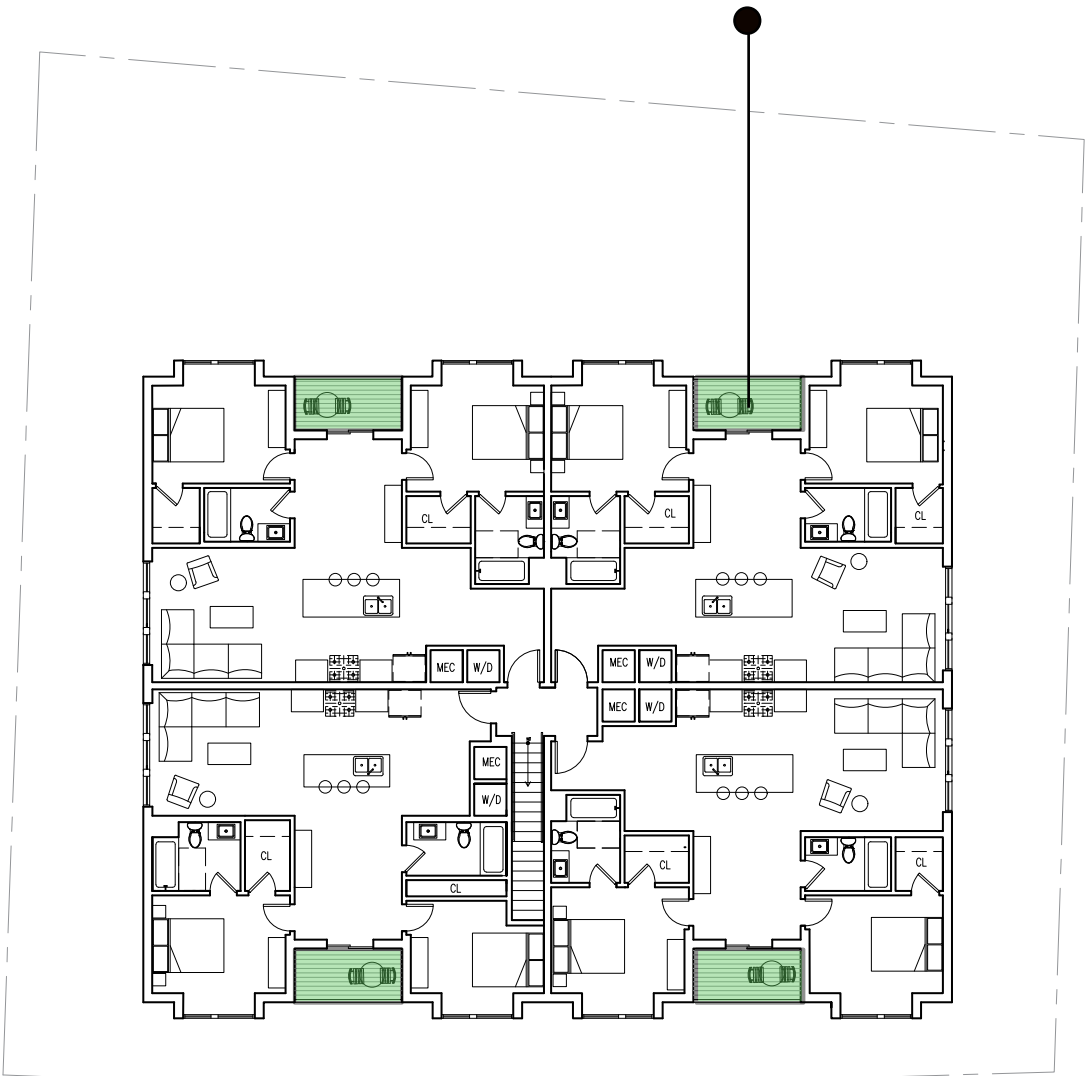


GROUND FLOOR

LANDSCAPE BUFFERS: Provide transition space between public and private realms

PEDESTRIAN AMENITIES: Onsite benches and bike parking

BALCONIES: Foster interaction with the outdoors and Bikepath



SECOND FLOOR

FACADE CHARACTERISTICS

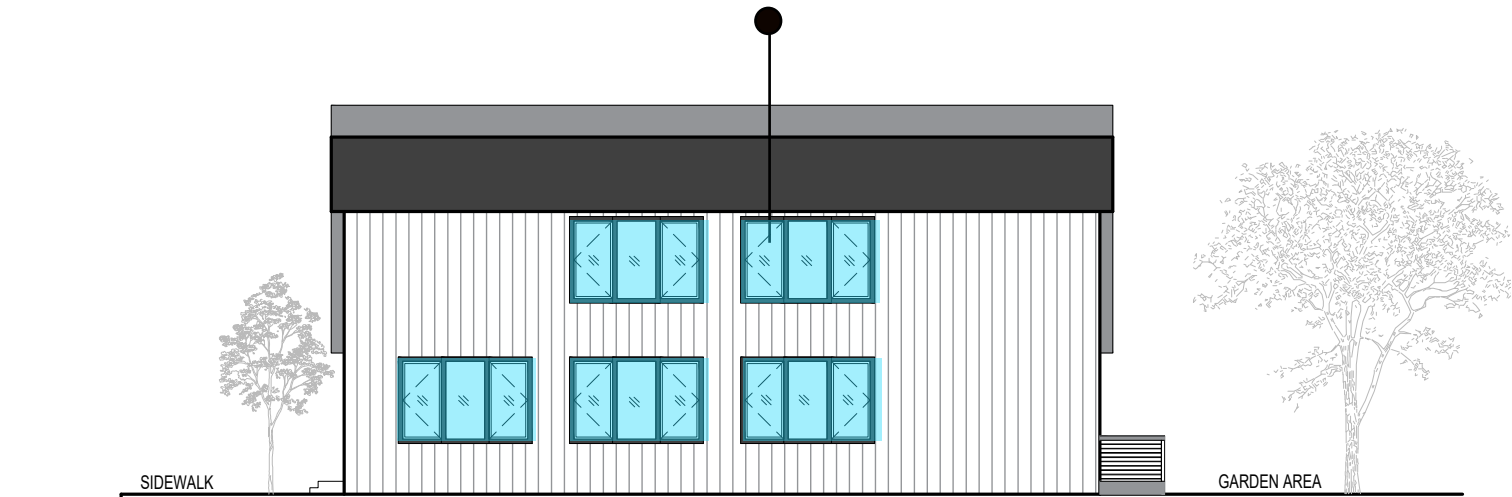
Depth in building
to break building mass

Ground floor transparency and variation
in facade with bays and balconies



PROPOSED FRONT ELEVATION

Variation in window elements to create
hierarchy in building facade



PROPOSED RIGHT SIDE ELEVATION

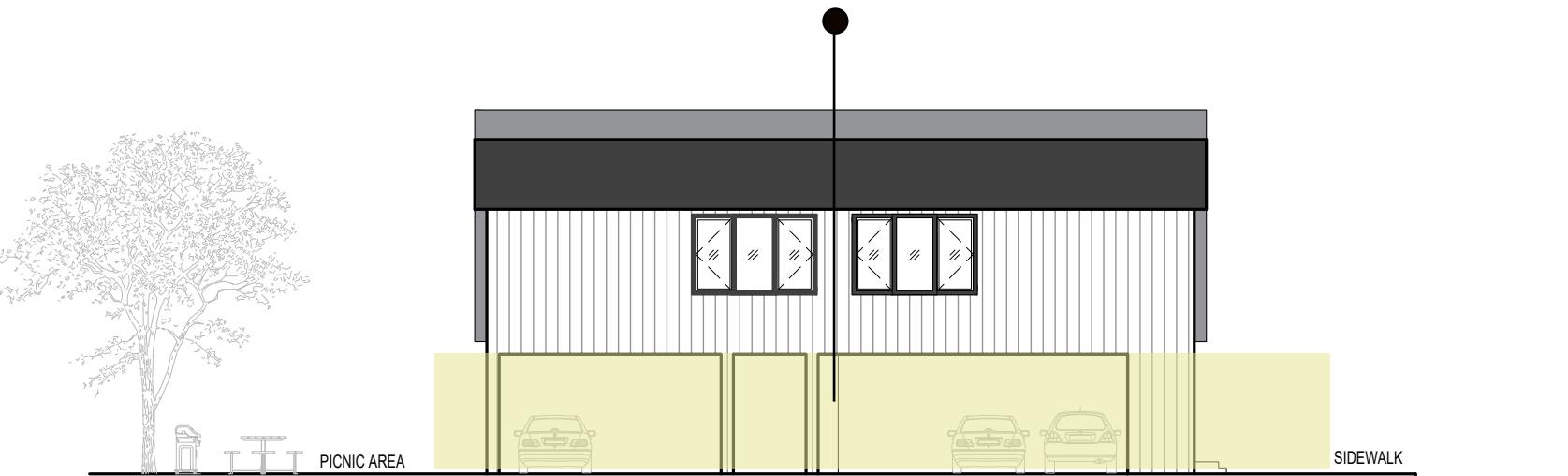
Advantage of views
towards the Bikeway from

Ground floor transparency and inter-
action with the Bikeway



PROPOSED REAR ELEVATION

Cyclist access and parking to link
concrete connection



PROPOSED LEFT SIDE ELEVATION

FACADE MATERIALS AND PRODUCTS

Swiss Pearl Reflex, Black

Reflex is a through-coloured, naturally dried fibre cement panel with a reflective surface coating, which creates a different return of the light. Depending on the viewing angle, this creates a restrained, shimmering look on the surface



Pac-Clad Redi-Roof Standing Seam

Redi-Roof panels feature an offset profile which adds strength and allows room for a hex head fastener. The clip, with its button-punched design, ensures an extra-snug fit. The one-piece design allows for ease of installation.



DRIVEWAY

Hardie Vertical Panel, Arctic White

Proprietary ColorPlus® Technology finishes provides years of lasting character and fade resistance. The factory-applied, baked-on color is cured between coats, creates a strong bond that resists peeling, chipping, and cracking for years to come.



New Barnwood Siding

Cedar Barnwood Siding offers a cost-effective alternative to reclaimed barnwood, boasting quicker installation, minimal waste, and none of the common issues such as pests, animal waste, nails, or lead.



CONTEXT RENDER

