

# **Arlington Shared Streets Safe Distance and Slow Speeds**

Arlington, MA

May 11, 2020

# Overview

- Background / Updates
- Why: Space and Speeds
- Quick-Build Shared Streets Concept
- Goals
- Phase 1 Pilot
- Support Needs



# Background / Updates

- Met 4/27 - Pivot from Mass Ave to shared streets
- Supported by resident requests to reallocate street space
- Labor and materials support from



THE LAWRENCE & LILLIAN  
SOLOMON FOUNDATION



# Why: Space and Speeds

- Crowded trails
- Narrow sidewalks
- Increase in people walking and biking
  - \*more with warmer weather coming
- People walking in the street for distance
- Less vehicles and increased speeding



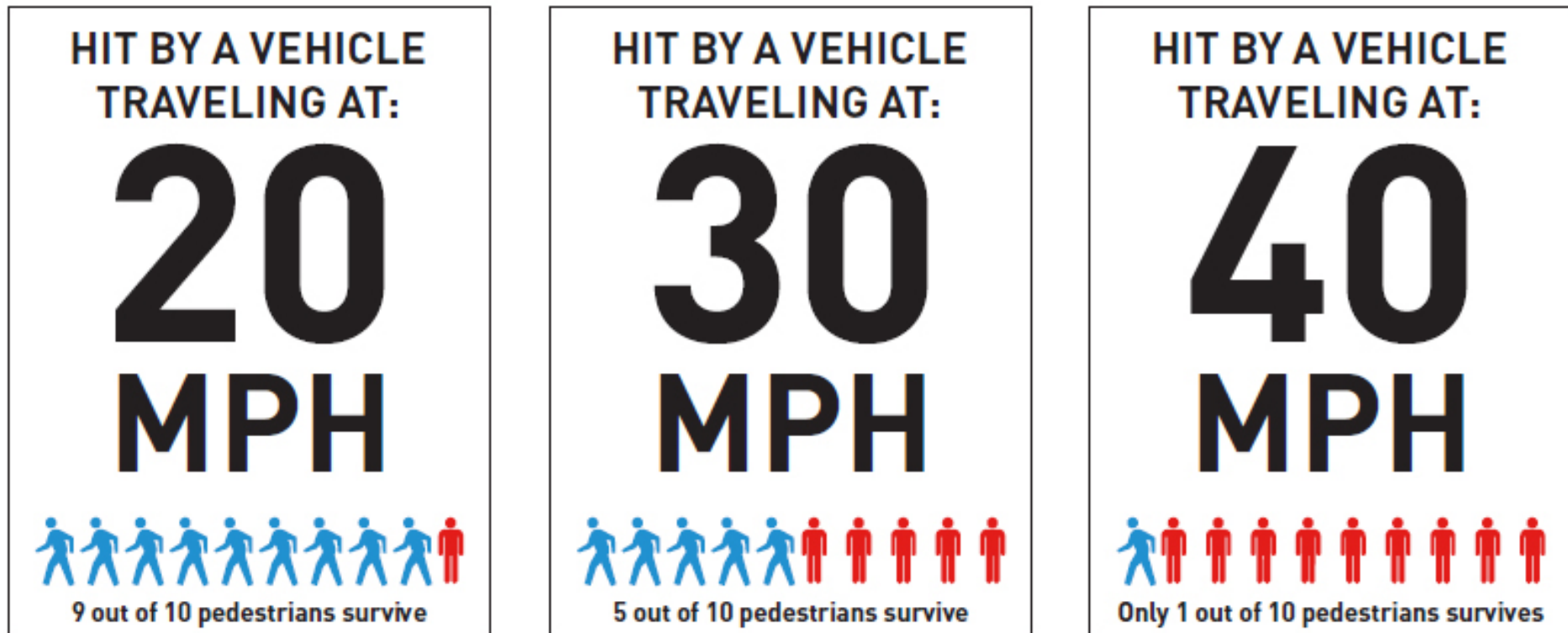
## Amid Pandemic, Traffic Fell 50% But Roadway Death Rate Doubled

May 04, 2020

By [Zeninjor Enwemeka](#)



# Slow Speeds Save Lives



*Vehicle Speed comparison to chance of Pedestrian Injury and Fatality*

*Image credit: <https://activetrans.org/blog/slow-down-chicago>*





DRAFT Concept:

**neighborwaysdesign**

# Quick-Build Shared Streets Concept

- Local quiet residential streets
- Prioritize active transportation – **people can walk and bike in the street**
- **Low speeds:** 10-20 mph
- **Tools:** barriers, signs, and cones - informational and advisory
- **Close street** to thru vehicle traffic
- **Maintain local and emergency access**
- Maintain existing parking
- Flexible, adaptable, reversible and removable





Oakland, CA



Oakland, CA



Bellevue WA



Burlington, VT






# STAY HEALTHY STREETS

## Keep it Moving!



Our family loves the 25th Ave Stay Healthy Street. I've been surprised by how much it's impacted our neighborhood's quality of life. Living on the street gives us access to more space for exercise and fun, which is not a surprise. What has been a wonderful unexpected aspect is seeing how the whole neighborhood uses the space. 

– M. Mainland, Central District

*Pictured: Father and son enjoying the Stay Healthy Street.*



**Seattle**  
Department of  
Transportation







# Goals

- Prioritize safety – slow speeds and safe physical distance
- Alleviate crowding in parks, trails, and sidewalks repurposing low volume streets
- Evaluate the impacts and success of a pilot
  - Collect data and surveys on compliance of distancing and speeds



## Shared Street for Social Distancing Drive with Care



# Work to Date

Since last meeting on 4/27 conducted initial:

- Outreach to residents / community leaders
- Network Analysis and criteria considerations
- DRAFT pilot locations
- Initial materials inventory
- Logistics and coordination considerations

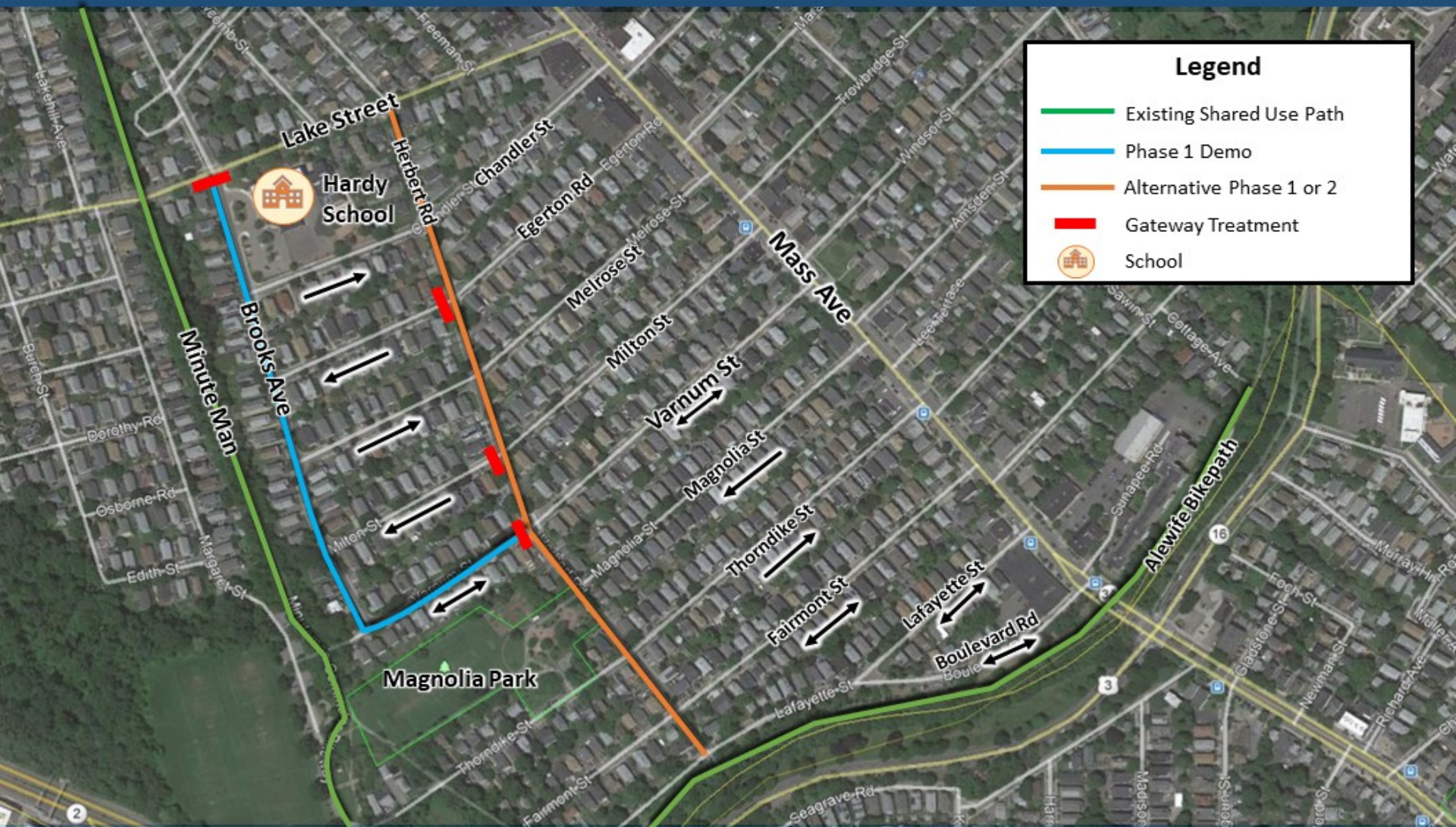
# Phase 1: Demonstration Project

- Demonstrate / test proof of concept
- Put in place for one week
- Evaluation
  - Collect data on operations and safety
  - Assess physical distancing compliance
  - Hear resident feedback and perspectives
  - Determine next steps / improvements



# Arlington Shared-Slow Streets

## DRAFT Phase 1 Locus Map



### Legend

- Existing Shared Use Path
- Phase 1 Demo
- Alternative Phase 1 or 2
- Gateway Treatment
- School



Not to Scale

5/6/20



# Why Brooks Ave?

- Relief valve for Minute Man
- Adjacent to Hardy School - high density of children under 18 years old
- Interest from neighborhood residents
- Serves key recreation needs



May 2, 2020, afternoon, ~70 degrees



# Requested support from Town staff

- Support proposal to Select Board
- Material support from different departments
- Delivery and set-up of materials
- Approvals for design and signage
- Assist with concept development, public outreach, data collection and evaluation





# Proposed Timeline

Task	Estimated Timeline: Week of					
	4/27/2020	5/4/2020	5/11/2020	5/18/2020	5/25/2020	6/1/2020
1 Project Initiation						
2 Design						
3 Public Outreach						
4 Implementation				*Selectboard mtg 5/18		
5 Evaluation						
6 Next Steps						TBD

# Immediate Next Steps



Sign agreement  
with Solomon  
Foundation for  
technical  
assistance



Get on Select  
Board agenda for  
5/18



Neighborways  
and DPCD to  
contact  
community  
members



Neighborways to  
draft design and  
determine  
material needs

# Feedback / Discussion



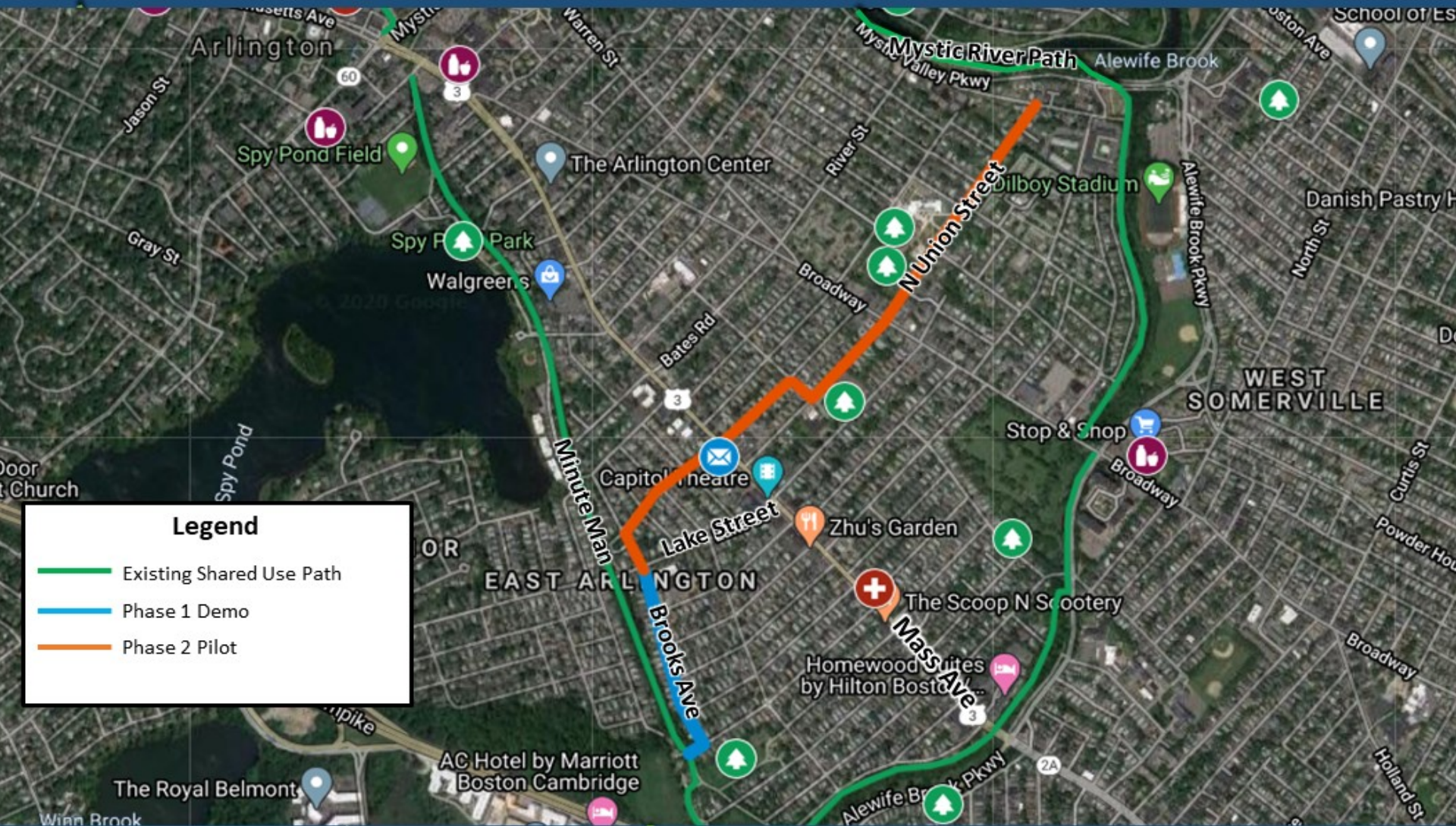


# Post-Demonstration

- If successful, determine length and extent of network implementation
- Consider phased approach
- Continue to address need to be outside and access to essential services
- Phase 2 draft ideas
- June-September period

# Arlington Shared - Slow Streets

## **DRAFT** Phase 2 Locus Map



### Legend

- Existing Shared Use Path
- Phase 1 Demo
- Phase 2 Pilot



Not to Scale

5/9/20



# Arlington Shared - Slow Streets

## DRAFT Initial Network Analysis – Potential Candidates

